



Basingstoke and Deane
Community Safety Partnership

Strategic Assessment

2010/2011

	EXECUTIVE SUMMARY	2
1.0	INTRODUCTION	5
1.1	Purpose	5
1.2	Methodology and limitations	5
1.3	Glossary of terms	7
2.0	DEMOGRAPHIC OVERVIEW	8
3.0	ALL CRIME	10
3.1	Performance Overview	11
4.0	VIOLENT CRIME	16
4.1	Background	16
4.2	Violence against the person	16
4.3	Sexual offences	17
4.4	Robbery	18
4.5	Domestic Abuse	19
4.6	Crimes involving the use of weapons.....	20
4.7	The emergency department project (ED Project).....	20
4.8	Achievements	21
4.9	Opportunities	22
5.0	ANTI-SOCIAL BEHAVIOUR	23
5.1	Background	23
5.2	Rowdy and inconsiderate behaviour	23
5.3	Criminal damage	25
5.4	Arson	26
5.5	Graffiti	27
5.6	Achievements	27
5.7	Opportunities	30
6.0	SUBSTANCE MISUSE	31
6.1	Background	31
6.2	Drugs	31
6.3	Alcohol.....	32
6.4	Achievements	34
6.5	Opportunities	35
7.0	ACQUISITIVE CRIME	36
7.1	Background	36
7.2	Burglary	36
7.3	Vehicle crime	37
7.4	Theft.....	37
7.5	Fraud and forgery	38
7.6	Achievements	38
7.7	Opportunities	39
8.0	YOUTH PROFILE	40
8.1	Background	40
8.2	Performance	40
8.3	Achievements	41
8.4	Opportunities	42
9.0	PROLIFIC AND PRIORITY OFFENDERS	43
9.1	Background	43
9.2	Performance	43
9.3	The future	43
10.0	FEAR OF CRIME	45
10.1	Background	45
10.2	Public consultation.....	45
10.3	Unauthorised encampments	45
10.4	Fly-tipping	46
10.5	Hate crime	46
10.6	Achievements	47
10.7	Opportunities	48

EXECUTIVE SUMMARY

The Basingstoke and Deane Community Safety Partnership (CSP) produces an annual Strategic Assessment which it reviews every six months. This ensures that the partnership is aware of current and emerging community safety trends, and, based on this, can set its priorities for the following year. Assessments are intended to assist the CSP in revising the Partnership Plan¹.

Prior to 2007/08 Basingstoke and Deane experienced above average crime and disorder. It was identified as one of the country's Priority 44 CSPs being one of the 44 areas in England and Wales with the highest crime rates per 1,000 population. Since 2007/08, as a result of actions taken by the partnership, crime has fallen steadily with a 12% (n1419) reduction over the last two years (2008/10). Anti-social behaviour has also significantly reduced in that time (-30%, n1713). As a result the borough has moved out of the worst quartile. However, there is no room for complacency. Basingstoke and Deane currently sits 256th² out of 372 CSP areas across England and Wales and there is still considerable room for improvement.

Last year total crime in the borough fell by 14% (n1780). CSP activities have resulted in significant reductions in acquisitive crime³ (-21%, n1301) and criminal damage (-28%, n771). Rowdy and inconsiderate behaviour reduced by 19% (n937) and recent consultation suggests that residents are feeling safer. However, violent crime now accounts for the largest percentage of total crime in the borough and figures have not moved significantly over the past three years. This is one of the areas that the partnership will focus on.

Basingstoke and Deane CSP has identified the priorities for the upcoming year based on research, data analysis and consultation with practitioners. Five key aspects were considered in the selection process which included the size of the problem compared to other problems in the borough, performance in comparison to our Most Similar Family Groups, the level of harm caused by the problem, changes over time and whether the problem is identified as a concern by our communities.

Taking all of this into account, the priorities for Basingstoke and Deane CSP for 2010/11 are;

- **Violent crime** (including violence against the person, sexual offences, robbery and domestic abuse, with a particular focus on violence and the night-time economy). While many other volume crimes in the borough have reduced, violence against the person has remained fairly static over the past three years. In addition, sexual offences and robbery

¹ Each CSP is required to produce a plan for the next three years covering short, medium and long term priorities. This plan must be updated annually to reflect any new priorities emerging from the Annual Strategic Assessment.

² The area that is 1st has the lowest levels of crime.

³ Includes the categories; burglary, vehicle crime, theft and fraud and forgery.

have increased and reports of domestic abuse have reduced while the number of repeat victims has risen. The town centre experiences the most violent crime and much of this is alcohol related and linked to the night-time economy. There are also knock-on effects in neighbouring areas such as Norden and Eastrop. By focusing on reducing offences in this contained area it is anticipated that an overall reduction in crime will be achieved.

- **Anti-social behaviour** (repeat and vulnerable victims and perceptions of anti-social behaviour). There are some people in the borough who, for various reasons regularly fall victim to anti-social behaviour and this can have a major impact on their lives. We want to improve the quality of life for these individuals so they feel safe and happy in their environment. While incidents of rowdy and inconsiderate behaviour have reduced significantly we want to reassure the public by keeping them informed, providing different outlets for them to voice their opinions and listening to and acting on their concerns. In addition there are strong links between crime (particularly criminal damage) and anti-social behaviour. Reducing anti-social behaviour will be beneficial in reducing crime and improving community cohesion.

Criminal damage has been successfully reduced over the last year but still makes up a large proportion of offences. Work in this area will be maintained to ensure figures continue to fall.

- **Fear of crime** (reducing the fear of crime and informing the public). As in most other areas the fear of crime is disproportionate to the actual amount of crime in the borough. This can be detrimental to the public and prevent individuals going about their daily routine. Reducing the fear of crime has been a priority for the partnership for the past three years. To ensure that residents feel safe and actively engage in their communities it will remain a priority.

Alcohol and drug related offences represent significant challenges for Basingstoke and Deane. Focusing on these offences will continue to be an underlying theme for the partnership.

In February 2010 the Government Improvement and Development Agency (I&DeA) invited Basingstoke and Deane CSP to undertake a safer communities peer challenge. Basingstoke and Deane welcomed the opportunity to have a peer team act as a critical friend to discuss the partnerships strengths and areas for improvement. The review team highlighted many areas where the partnership is working well. These included reductions in crime, being awarded beacon status, the work undertaken with communities, for example Neighbourhood Watch, and the effective way in which at an operational level the partnership works together to reduce crime and disorder. The review team also highlighted some areas for improvement.

They included making residents more aware of the successes that have been achieved in reducing crime and disorder, more regular and in-depth comparisons to areas outside of Hampshire, empowering communities and developing the strategic side of the partnership. These will be the underlying objectives in the pursuit of the main priorities outlined above.

1.0 INTRODUCTION

1.1 Purpose

1.1.1 Basingstoke and Deane Community Safety Partnership (CSP) produces a Strategic Assessment annually and reviews it every six months to ensure an intelligence-led business planning approach. CSPs can then be aware of local priorities and alter their focus as problems in an area change. Assessments are intended to assist the CSP in revising the Partnership Plan.

1.1.2 The aim of this document is to:

- establish an accurate picture of current and emerging community safety trends and why they may have occurred in the borough
- through the Partnership Plan, organise activity and allocate resources based on identified needs, both at a local and county level
- consider our performance and in doing so compare ourselves to others CSPs.

1.1.3 One of the Police Operational Command Units (OCU) across Hampshire is piloting a joint Strategic Assessment this year. 3OCU is not participating in this pilot. However, a summary of key findings regarding current priorities and potential emerging problems was fed into the police document. The CSP then used the police document as a starting point for which to base this assessment on.

1.2 Methodology and limitations

1.2.1 To ensure a partnership and holistic approach, partnership data has been used throughout this assessment.

1.2.2 Previous Strategic Assessments were based on data collected from 1 April to 31 March. Last year Hampshire County Council changed the dates for budget setting purposes. Now the current assessment is based on data from 1 June 2009 to 31 May 2010, with comparisons to the previous year where appropriate. The most recent six months, December 2009 to May 2010 have also been included to provide an up-to-date picture of the problems, with comparisons made between the previous six months and the same six months last year. This will help to determine whether or not there are seasonal trends.

1.2.3 This document has been created based on the Scanning, Analysis, Response and Assessment (SARA) problem solving framework where local problems are identified as priorities for action. The opportunities suggested at the end of each section have followed the

problem analysis triangle method, whereby the offender, place and target or victim have been considered, and proposals on how best to tackle the problem have been made to the partnership.

- 1.2.4 Data contained in this report has been referenced with the supporting source, and relevant graphs and tables appear throughout the text and in the appendices. Data used in this report has been accepted as reliable and valid.
- 1.2.5 It is acknowledged that under-reporting is a particular problem in relation to crime. Consequently this assessment will only reflect those crimes and incidents which have been reported to relevant agencies and recorded in the correct manner. Crime statistics obtained from Hampshire Constabulary's performance reporting system 'Business Objects' are based on the time and date the offence was reported not when it occurred. A further problem is that data in relation to offenders is reliant on detections. Some fields are not completed and therefore show as blank or not stated. When interpreting the results it is important to be aware of this.
- 1.2.6 Acknowledgement is given both to members of the CSP for their constructive feedback and input during the consultation stage of the process, and partners for their help and assistance in supplying various data sets.

1.3 Glossary of terms

Operational Command Unit (Basingstoke and Deane, Hart, Rushmoor and East Hants)	3OCU
Acceptable Behaviour Contract	ABC
Anti-Social Behaviour	ASB
Anti-Social Behaviour Injunction	ASBI
Anti-Social Behaviour Order	ASBO
Basingstoke Area Strategic Partnership	BASP
Black Minority Ethnic	BME
Crown Prosecution Service Rape and Serious Sex Offences	CPS RASSO
Community Safety Partnership	CSP
Community Safety Patrol Officers	CSPO
Drug and Alcohol Action Team	DAAT
Drug Rehabilitation Requirement	DRR
Drug and Alcohol Arrest Referral	DAAR
Domestic Abuse Stalking and Harassment	DASH
Drug Intervention Programme	DIP
Dog Owner Control Contract	DOCC
Designated Public Place Order	DPPO
Government Office South East	GOSE
Local Area Agreement	LAA
Local Alcohol Profiles for England	LAPE
Local Intervention Fire Education	LIFE
Local Strategic Partnership	LSP
Multi Agency Risk Assessment Conference	MARAC
National Indicator	NI
Neighbourhood Management System	NMS
National Standards of Incident Recording	NSIR
Night Time Economy	NTE
Princes Trust	PT
Priority Action Group	PAG
Police National Computer	PNC
Prolific and Priority Offender	PPO
Recidivist Holistic Interventions North and East OCU	RHINO
Record Management System	RMS
Scanning Analysis Response Assessment	SARA
Tasking Coordinating Group	TCG
Young Fire Fighters Association	YFA
Youth Inclusion Support Panel	YISP
Youth Offending Team	YOT

2.0 DEMOGRAPHIC OVERVIEW



- 2.1 The borough of Basingstoke and Deane covers an area of over 245 square miles within north Hampshire, of which over 90% is rural. Less than 8% of the borough is built up, supporting the majority of the population of just over 160,000⁴ people. Basingstoke and Deane has a younger than average age profile with over 25% of the population aged 19 or under and only 17% aged 60 or older.
- 2.2 Over 60% of the population (96,000) live within the town of Basingstoke. This has grown more than five times its size compared to half a century ago, and extends into several adjoining parishes.
- 2.3 If house building rates in the borough continue as currently forecast, the population can be expected to increase by up to 10,000⁵ over the next five years. Over 70% of the recent and planned major development is located within the central area of Basingstoke town and around the northern urban fringe of the town.
- 2.4 Unemployment is relatively low at around 3.7%⁶ of the economically active working age population which is typical of rates in the South East. Over 84% of the borough's working age population are economically active, significantly higher than that of the country as a whole.
- 2.5 Basingstoke's strategic location on the national road and rail networks has contributed to its success as an employment centre, with 83% of jobs located in the town. The boroughs close proximity to London, to the ports of Southampton and Portsmouth, and to Heathrow, Gatwick and Southampton airports, has also helped its commercial success. Commuting out of the

⁴ 2007 Small Area Population Forecasts HCC (2008)

⁵ 2007 based Small Area Population Forecasts HCC (2008)

⁶ Annual Population Survey July 2007 – June 2008 – model based unemployed

borough to work in other nearby centres is counter balanced by those commuting into the borough from other parts of Hampshire and surrounding counties.

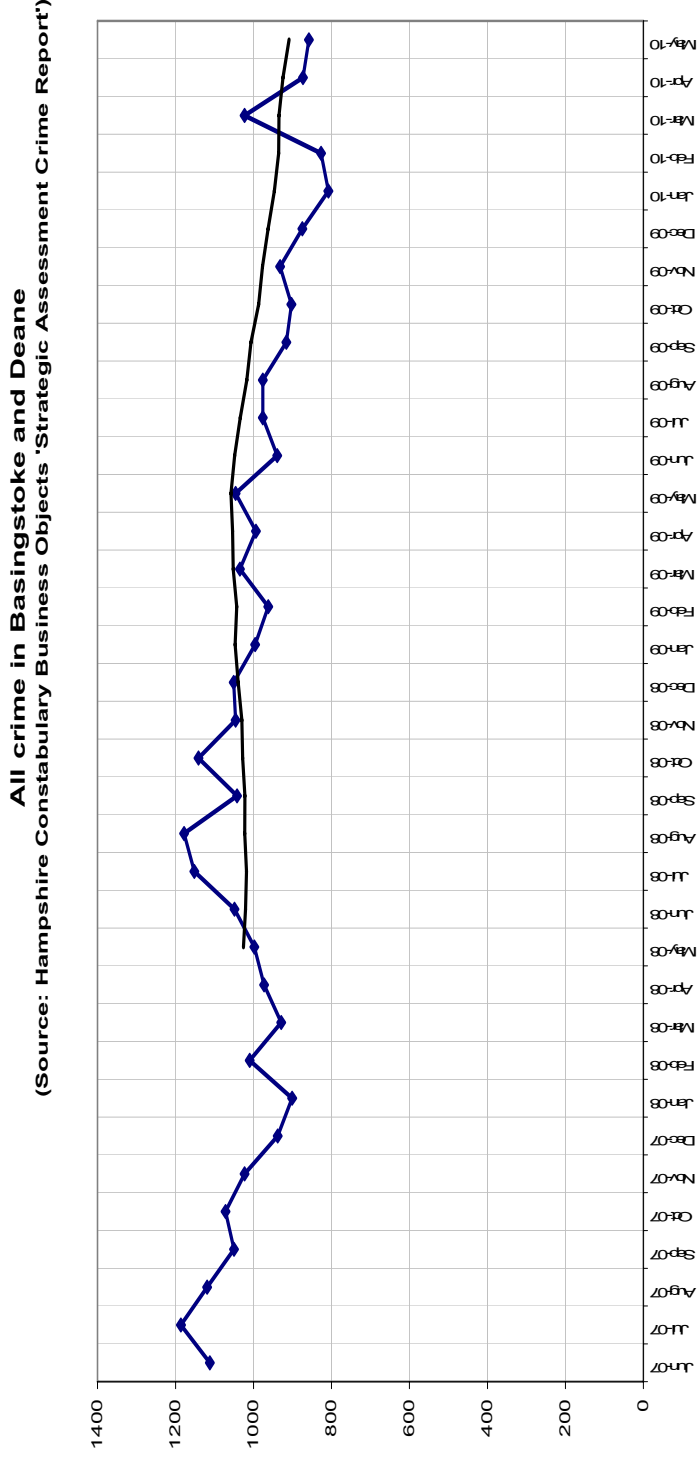
- 2.6 Average earnings levels compare favourably with wage levels for Hampshire and the South East and with national averages.
- 2.7 The English Indices of Deprivation 2007 (ID2007) indicates that Basingstoke and Deane experiences relatively little deprivation in the national context. When all indicators are combined into the 'Index of Multiple Deprivation' (IMD2007), only one of the borough's geographical areas just falls within 30% most deprived in England. More than half fall within the least deprived 20% in England, five of them within the 1% least deprived nationally. However, some parts of the borough experience relatively high levels of disadvantage in terms of education, crime and income.
- 2.8 There are 24 community facilities and 65 village halls in the borough, where a wide range of activities take place, including health services, education and learning, arts clubs, uniformed groups, social clubs and events, and sporting activities. The voluntary and community sector also works alongside the statutory organisations, delivering highly valued services to the public.
- 2.9 Residents enjoy a wide range of publicly provided leisure services and facilities in and around the borough. This is complemented by a range of private sector attractions, such as cinemas, health clubs, golf and tennis clubs and equestrian facilities. A total of 87%⁷ of borough residents feel that Basingstoke and Deane is a good place to live.
- 2.10 Festival Place, a major redevelopment of Basingstoke town centre in 2002, has greatly enhanced the borough's shopping, restaurants, cafés and leisure facilities. Together with improvements to the 'Top of Town' and proposals to refurbish The Malls, the town centre continues to attract local and regional shoppers.
- 2.11 If the borough continues to grow, it is not unreasonable to expect levels of reported crime and anti-social behaviour to increase. The CSP needs to consider how it can deliver, with the limited resources available, effective policing and prevention advice to an increasing and diverse population.

⁷ BDBC PLACE Survey 2008

3.0 ALL CRIME

All police recorded crime is classified under one of thirteen Home Office categories. These include, 1a violence against the person, 1b sexual offences, 1c robbery, 2a burglary dwelling, 2b burglary non dwelling, 3a theft of a motor vehicle, 3b theft from a motor vehicle, 3c other theft and handling, 3d shop theft, 4 fraud and forgery, 5 criminal damage, 6 drugs and 7 miscellaneous offences. Anti-social behaviour is recorded separately.

Graph 1



3.1 Performance Overview

- 3.1.1 During the last year (1 June 2009 to 31 May 2010) crime in Basingstoke and Deane reduced by 14% (n1,780).
- 3.1.2 In comparison total crime in the 3OCU and across the whole Hampshire police force area reduced by 12%. Nationally police recorded crime⁸ fell by 8%, while the British Crime Survey⁹ suggests there was a 9% reduction in offending.
- 3.1.3 Family group comparisons¹⁰ using iQuanta (June 2009 to May 2010) show that compared to 15 other local authority areas with some similar characteristics Basingstoke and Deane is 14th out of 15¹¹ for total crime, with 67.7 crimes per 1,000 residents. The average for the group was 57.3 (see appendix 1 for a full list of our most similar family groups). When compared to other police forces in Hampshire Basingstoke and Deane ranks 9th out of 14, and even though it has the fourth highest population and far fewer resources than the two unitary areas of Southampton and Portsmouth, it is performing better than the force average (see appendix 2 for a full list of Hampshire police force areas).
- 3.1.4 The 12 month moving average graph (graph 1, page 10) which balances out the short term fluctuations and displays the longer term trend shows that after a fairly long period of stability crime in the borough is beginning to fall.
- 3.1.5 In Basingstoke and Deane six month comparisons, which take the most recent six months (1 December 2009 to 31 May 2010) and compares them to the previous six months (1 June 2009 to 30 November 2009), show that crime fell by 7% (n372).
- 3.1.6 Annual comparisons where the most recent six months (1 December 2009 to 31 May 2010) are compared to the same six months the previous year (1 December 2008 to 31 May 2009) display a 13% (n816) reduction in offending.
- 3.1.7 Graph 2 (page 13) shows the geographical spread of recorded crimes across the police beats for 2009/10. The town centre and subsequently Norden were the areas of the borough which featured most heavily across all crime types. This has been the case for the past three years.

⁸ Offences recorded by the Police across England and Wales

⁹ A nationally representative sample survey (now based on more than 45,000 respondents) of households in England and Wales

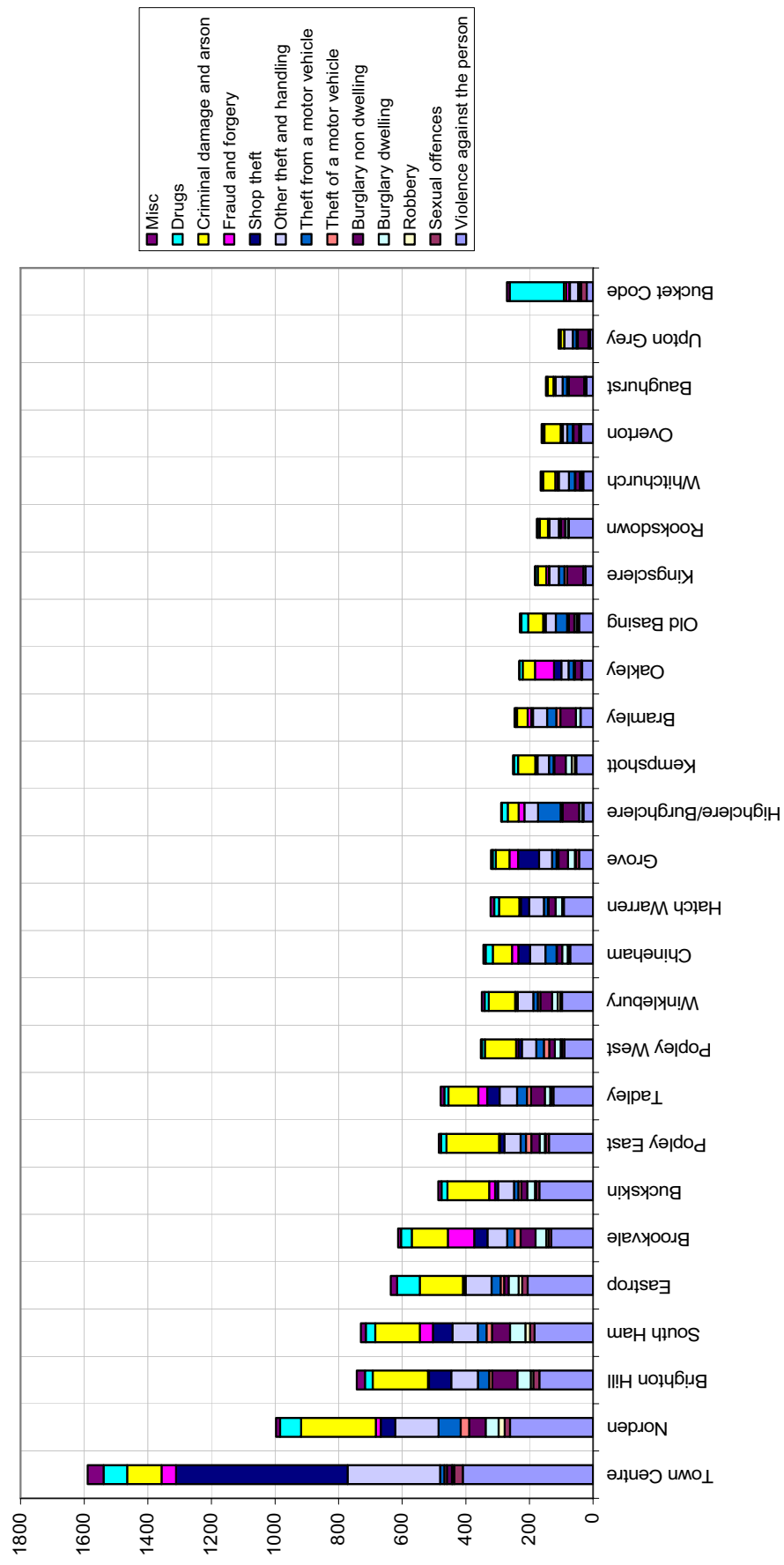
¹⁰ Peer comparisons in iQuanta are made using Most Similar comparison groups. These groups provide a benchmark for comparison of crime rates and other indicators with similar areas elsewhere in England and Wales. They also help to identify similar areas which are performing well, to promote the sharing of good practise.

¹¹ The best performing area is first and the worst performing area is 15th.

3.1.8 Figures based on offences per 1,000 population do not take into account the town centre due to transient nature of its inhabitants. Based on this measurement Eastrop (120.4) and Norden (114.7) had the highest number of offences. With the exception of Rooksdown and Tadley, areas with higher total crime rates generally had the highest number of crimes per 1,000 population (see appendix 3).

Graph 2

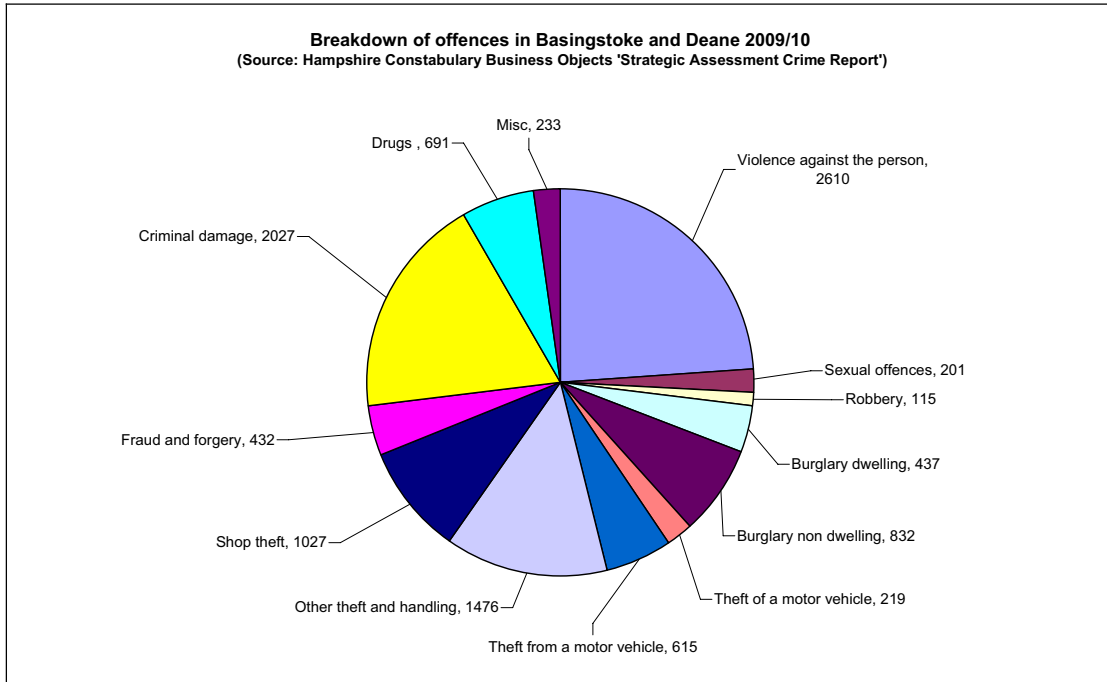
All crime in Basingstoke and Deane 1 June 2009 to 31 May 2010
 (Source: Hampshire Constabulary Business Objects)



- 3.1.9 Last year Basingstoke and Deane experienced the greatest reductions in burglary offences. During this time burglary was a priority for the borough and there were 763 fewer offences (-38%) than in 2008/09. Broken down, burglary dwelling reduced by 35% (n238) and burglary non dwelling reduced by 39% (n525).
- 3.1.10 Criminal damage was another of the borough's priorities and it also reduced significantly. Offences fell by 28% (n771) and this follows a 4% (n128) reduction the previous year. In addition incidents of arson recorded by Hampshire Fire and rescue Service reduced by 32% (n93).
- 3.1.11 Vehicle crime in the borough was reduced by 25% (n275). Both thefts of motor vehicles (-28%, n83) and thefts from motor vehicles (-24%, n192) decreased.
- 3.1.12 Reducing rowdy and inconsiderate behaviour was another priority for Basingstoke and Deane CSP. Last year there was a 19% (n937) reduction in incidents and this follows of from a 14% (n786) decrease in 2008/09.
- 3.1.13 There were also reductions in theft offences (-11%, n311). Shop theft (-2%, n19) and other theft and handling (-17%, n292) decreased.
- 3.1.14 Reducing violent crime was a priority for the borough last year and total violent crime fell by 1% (n31). Violence against the person is one of the three categories making up violent crime and accounted for 89% of total violent offences. It reduced by 4% last year (n94) building on a 7% (n192) reduction the previous year.
- 3.1.15 Taking a hard line approach to substance related offending was another of the CSPs priorities. Last year 60% (n258) more drug offences were recorded and this is seen as a positive rise because it means that more offenders were apprehended.
- 3.1.16 Fraud and forgery offences increased by 13% (n48) in 2009/10.
- 3.1.17 It was mentioned above (3.1.14) that total violent crime reduced by 1% last year. Sexual offences accounted for 7% of total violent crime but they increased by 33% (n50). Robberies made up the remaining 4% of violent crime and increased by 13% (n13) last year. Over the next year Basingstoke and Deane CSP will continue to focus on reducing all aspects of violent crime.

3.1.18 Previous assessments identified criminal damage as the most common crime type¹² in the borough. However, while damage has reduced significantly, violent crime has remained fairly static and is now the largest contributor to crime in the borough (23%, n2,610). This was followed by criminal damage (19%, n2,027) and other theft and handling (14%, n1,476).

Graph 3



¹² Figures exclude anti-social behaviour data.

4.0 VIOLENT CRIME

4.1 Background

4.1.1 For the purposes of this assessment violent crime includes the categories 1a violent crime, 1b sexual offences and 1c robbery from the Home Office 13 groupings.

4.2 Violence against the person

4.2.1 Reducing violent crime has been a priority for the CSP since 2007. Violence against the person reduced by 4% (n94) last year and this follows a 7% reduction in 2008/09. Six monthly (-11%, n149) and year-on-year (-8%, n106) comparisons also show reductions.

Table 1

Violence against the person	Between June 2008 and May 2009	Between June 2009 and May 2010	% change and number
Basingstoke and Deane	2,704	2,610	-4% (n94)

4.2.2 The reduction achieved in Basingstoke and Deane is in line with 3OCU (-7%) and Hampshire (-4%). Nationally, police recorded crime reveals a 4% reduction in violence against the person offences while the British Crime Survey reports no significant change (-1%).

4.2.3 Although violence against the person reduced, during the 12 months from June 2009 to May 2010 it was the single largest contributor to crime in the borough, accounting for 23% of all recorded crime. Previously criminal damage accounted for the biggest proportion of offences.

4.2.4 When compared to our most similar family groups (June 2009 to May 2010) Basingstoke and Deane CSP ranks 14th out of 15 areas with 16.2 crimes per 1,000 residents. The average for the group is 11.4. However, when compared to other Hampshire police force areas Basingstoke and Deane ranks 9th out of 14 areas and is performing better than the force average.

4.2.5 The town centre experiences the highest amount of violence against the person (16%, n410). This is likely to be attributable to the high level of alcohol consumed and the large number of people in a concentrated area. However, last year offences in the town centre reduced by 15% (n71), and with the partnerships focus on violence in the night time economy over the coming year it is anticipated that offences will continue to fall. Where details were available (52%, n211), 85% (n180) of all reports in the town centre last year stated that the offender or aggrieved were affected by a substance. Almost a third occurred in or outside of a licensed premises, the most common being Liquid (46%, n54) and Bar Rock (25%, n29). Excluding victimless crimes (n75) more than half of offences were committed by strangers (60%, n197).

A third of violence against the person offences in the town centre were classified as assault occasioning ABH (34%), while common assault and battery (24%) and harassment, alarm and distress (17%) were the next most frequent. The peak reporting times for offences were Saturday (spill over from Friday night) and Sunday (spill over from Saturday night) between midnight and 3am.

4.2.6 Other locations to experience high levels of violence against the person were Norden (n261) in the urban sector and Tadley (n125) in the rural area (see appendix 4 for details of all areas). These offences are distinctly different to those in the town centre as the night-time economy does not have such an impact. Away from the town centre offences increased just slightly over the weekend when the peak time for reporting was between 6pm and 2am. During the week the peak time for reporting was between 3pm and 7pm. Away from the town centre victims and offenders were more likely to have known each other (65%, n1339). Over the coming year the partnership will focus on domestic abuse.

4.3 Sexual offences

4.3.1 Sexual offences are one of the lowest volume crimes in the borough, and last year accounted for 1.8% of all offences. Nonetheless the impact on victims and their families and on the wider public is significant.

4.3.2 While overall violent crime reduced last year, sexual offences increased by 33% (n50), from 151 to 201. Year-on-year comparisons also show a rise (+33%, n24).

Table 2

Sexual offences	Between June 2008 and May 2009	Between June 2009 and May 2010	% change and number
Basingstoke and Deane	151	201	+33% (n50)

4.3.3 Sexual offences also increased across 3OCU (+23%) and Hampshire (+3%). Nationally, police recorded sexual offences increased by 6%.

4.3.4 Current iQuanta data (June 2009 to May 2010) scores Basingstoke and Deane as the worst performing area in the family group with 1.2 sexual offences per 1,000 residents. The average was 0.7. Compared to other police forces in Hampshire, Basingstoke and Deane ranks 9th out of 14 areas with figures just above the force average.

4.3.5 Sexual offences in the borough (2009/10) have been examined. The most common types were sexual assault on a female aged 13+ which increased by 32% (n12) last year, intentional exposure which rose by 111% (n21) and rape of a female aged 16+ which increased by 47% (n9). Approximately 17% (n35) of sexual offences were historical, up from

10% the previous year. At present it is not known what has triggered this increase as it has not been consistently recorded. The 3OCU strategic assessment reports some victims had come forward as they were aware the suspect had access to children the same age as them at the time of their abuse. A large number of sexual offences were committed by someone the victim knew (56%, n112). Sexual assault (53%) and rape (79%) were more likely to have been committed by someone known to the victim but the majority of exposure offences (90%) were committed by a stranger.

4.3.6 Across Basingstoke and Deane the peak age for victims was 12 to 15 years old (29%, n58) and the majority of these were female (86%, n50). Younger victims tended to be victims of child abuse and indecency, 15 to 30 year old victims were more likely to be victims of rape and older adults were often victims of indecency offences (see appendix 5). Where details were available most victims were female (88%, n167), but the number of male victims has increased (+44%, n7) since last year. Offenders varied in age but peaked between 21 and 50 years old (63%, n17). The number of young sex offenders aged 10 to 17 known to the youth offending team increased from none in 2008/09 to six last year.

4.3.7 Basingstoke town centre was the top location for sexual offences last year (13%, n26). More than 70% (n73%, n19) of offences here occurred in public places including bars and shops and in the street. Where details were available (89%, n23) a large number of offences in the town centre were committed by strangers (70%, n16). The majority of offences were classified as sexual assault on a female 13+ (50%, n13) and intentional exposure (19%, n5). Sexual offences in the town centre peaked on Saturday (n27%, n7) and this is most likely due to the high footfall of people using the town at the weekend.

4.3.8 Other locations with above average numbers of sexual offences were Brighton Hill (9%, n17), Eastrop (9%, n17) and Norden (9%, n17) (see appendix 6). As with violence against the person, outside of the town centre more offences were committed by someone known to the victim (64%, n105) rather than a stranger.

4.4 Robbery

4.4.1 Last year robbery contributed just 1% of all crime in the borough making it the lowest level crime type. However robbery has increased year on year since 2007/08 and last year rose by 13% (n13). This was due to an increase in the number of robbery personal offences. Robbery of a business remained stable. Six monthly (+5%, n3) and year-on-year (+2%, n1) comparisons also displayed slight increases.

Table 3

Robbery	Between June 2008 and May 2009	Between June 2009 ad May 2010	% change and number
Robbery personal (Basingstoke and Deane)	89	102	+15% (n13)
Robbery business (Basingstoke and Deane)	13	13	0%
Total robbery	102	115	+13% (n13)

- 4.4.2 Robbery offences increased across the north east of the county (3OCU, +12%). However police recorded offences reduced in Hampshire (-9%) and nationally (-6%).
- 4.4.3 Robbery offences in the borough (2009/10) have been examined, and the majority were recorded as robbery personal (89%, n102). The items most often taken were money and mobile phones. At least five offences were drug related and three involved the victim stating their giro money had been stolen. Victims and offenders of robbery personal were usually male and teenagers or in their twenties. In relation to robbery business, the Co-op in Blackdown Close, Buckskin, was targeted twice last year. Where details were available 35 robberies involved the use of a weapon, with bladed implements the most common (80%, n28). Robbery peaked on Friday (9pm to 3am) and Saturday (6pm to 1am) nights.
- 4.4.4 Unlike the other two violence categories which were most common in the busy town centre, the top locations for robbery (2009/10) were Norden (17%, n20) and South Ham (13%, n15) where offences increased by 100% (n10) and 67% (n6) respectively (see appendix 7 for details of all areas). These were also the top beats based on crimes per 1,000 population and have historically experienced high levels of robbery. Most offences last year happened in the street while victims were going about their daily routine.

4.5 Domestic Abuse

- 4.5.1 Domestic abuse is 'any incident of threatening behaviour, violence or abuse (psychological, physical, sexual, financial or emotional) between adults who are, or have been, in a relationship together, or between family members regardless of gender or sexuality'.
- 4.5.2 Domestic abuse is measured in two ways. The first is the number of incidents reported to the police during any given period. Because under-reporting is highly prevalent, success is measured if the number of reports increases over time. This means that victims are successfully being encouraged to report their abuse. Between June 2009 and May 2010, 624 incidents of domestic abuse were reported to the police. This was a 13% (n90) reduction on the previous year.

- 4.5.3 Incidents of domestic abuse (2009/10) have been examined, 70% (n434) of reports related to assault. Harassment (8%, n48), criminal damage (7%, n44) and public order offences (3%, n18) were the next most frequently reported. Where details were available 80% (n492) of victims were female and 20% (n121) were male (see appendix 8 for a breakdown of victim and offender details). The top locations for reported abuse were Norden (n67), Brighton Hill (n62), Buckskin (n46) and South Ham (n45). These were also the top locations in 2008/09.
- 4.5.4 The other way of measuring performance in relation to domestic abuse is by looking at the number of repeat victims. In this way success is measured by a reduction in the number of repeat victims. However, in past year the number of repeat victims in Basingstoke and Deane has risen. Both repeat crimes (+313%, n100) and repeat incidents (+352%, n370) increased.

4.6 Crimes involving the use of weapons

- 4.6.1 In Basingstoke and Deane crimes involving weapons are unusual and contributed 10% (n296) of all recorded violent crime between June 2009 and May 2010. Broken down, 10% (n260) of violence against the person, 0.5% (n1) of sexual offences and 30% (n35) of robberies involved the use of a weapon. Despite an increase in two of the three violence categories there was a reduction in the number of crimes involving weapons (-19%, n67). Reductions in the number of offences involving bladed implements (-13%, n18), firearms (-18%, n3), glass, (-37%, n14) and non bladed implements (-19%, n32) occurred last year.
- 4.6.2 Where details were available (43%, n127) the age group most likely to use a weapon was 16 to 23. Overall males (83%, n105) were more likely than females (17%, n21) to use a weapon.
- 4.6.3 Norden had the highest number of violent crimes where a weapon was used (14%, n42). Norden also had the highest number of incidents involving bladed implements, non-bladed implements and firearms. The town centre had the highest number of glassing incidents.

4.7 The emergency department project (ED Project)

- 4.7.1 Basingstoke and Deane Borough Council has teamed up with the emergency department at the North Hampshire Hospital to gain a greater understanding of the links between alcohol, crime and anti-social behaviour. The main focus of the project is a paper based questionnaire which is filled out with victims of violent crime at the hospital.
- 4.7.2 The ED Project was launched on 1 April 2008. The project was evaluated after its first and second years and these evaluations found that while the questionnaire did return some very useful assault data, some parts were not working well and changes were necessary. The main problems were the low number of forms completed and gaps in the data. After the most recent evaluation a meeting was held between the council, hospital and Government Office South East (GOSE) to discuss ways of moving forward. It was decided that we would amend

the questionnaire, look to going electronic, analyse results more regularly and, where necessary, provide training. It is hoped that making these changes will increase the volume and quality of the results and will ensure that the information we gather can be used to effectively target intervention and prevention work across the borough.

4.8 Achievements

4.8.1 Various initiatives have been undertaken to try and reduce violent crime across the borough:

- The Pastor Patrol Scheme in the town centre is developing and there are currently 75 active Street Pastors. The aim is to increase this number to 100 by early 2011.
- The Sanctuary Scheme enables victims of domestic abuse to remain in their own home with appropriate security measures in place. As of July 2010, 26 properties in the borough have been made secure under this scheme.
- In the past year 18 male offenders of domestic abuse were referred to the borough's perpetrator programme, 17 of these accessed the programme and 8 (47%) completed it.
- Multi-Agency Risk Assessment Conferences (MARAC) continue to be held to discuss high risk cases of domestic abuse. Between June 2009 and May 2010 164 cases were referred.
- The CSP has continued its work with the emergency department on preventing violence through information sharing. The project team is currently looking at ways to move the project forward including amending the questionnaire and going electronic.
- Violence is now a cross cutting theme for the Basingstoke Area Strategic Partnership (BASP). Over the coming year all of the Priority Action Groups (PAGs) which make up the partnership, will contribute to reducing violent crime.
- The Alcohol Steering Group will meet quarterly to discuss alcohol related issues particularly around violence and the night time economy.
- The 3OCU Rape Reduction Group first met in March 2010. The group is made up of police representatives, representatives from CSPs, the CPS RASSO¹³, the Lucy Faithful Foundation, refuges and Connexions.
- The Rape Education Programme was launched in October 2009. The programme aims to reduce alcohol related rape and sexual offences by informing young people, aged 14 to 24, about the links between alcohol consumption and sexual assault. The programme is currently being rolled out in schools and colleges across the 3OCU area.

¹³ This is - Crown Prosecution Service Rape and Serious Sex Offences

4.9 Opportunities

Intelligence opportunities

- Effective use of data obtained through the emergency department project
- Carry out regular violent crime analysis, examining victims, offenders, locations and other factors including domestic abuse
- Continue to develop links with partners and agencies including the Street Pastors, Pub Watch and licensed trade so that information and intelligence can be shared
- Effective use of the Alcohol Steering Group to deal with alcohol related violent crime
- Work with identified groups to encourage reporting

Prevention opportunities

- Provide targeted prevention advice to identified vulnerable groups including both males and females
- Information available in public places such as doctors and dentists
- Direct patrols to hotspot areas at peak times
- Work with licensed premises to encourage the widespread use of polycarbonate glasses, not serving people that are intoxicated and dealing with potentially violent customers
- Effective use of MARACs and DASH assessments

Enforcement opportunities

- Enforce licensing conditions and tougher penalties on licensed premises that continually break the law
- Work with licensees to increase the use of exclusion orders and pub watch bans
- Effective use of Drink Banning Orders

5.0 ANTI-SOCIAL BEHAVIOUR

5.1 Background

5.1.1 Anti-social behaviour (ASB) is defined as 'behaviour that causes or is likely to cause harassment, alarm and distress to individuals not in the same household as the perpetrator' (Crime and Disorder Act 1998).

5.2 Rowdy and inconsiderate behaviour

5.2.1 As a CSP, under the Local Area Agreement (LAA) process, we measure anti-social behaviour by looking at the number of rowdy and inconsiderate incidents recorded by the police. National Standards of Incident Recording (NSIR)¹⁴ defines rowdy and inconsiderate behaviour as any report of rowdy behaviour and general nuisance in any place to which the public have access.

5.2.2 In 2009/10 there were 4,008 incidents of rowdy and inconsiderate behaviour recorded by the police in Basingstoke and Deane. This is a 19% (n937) reduction on the previous year during which there were 4,945 incidents. Six monthly (-13%, n278) and yearly (-17%, n387) comparisons show further reductions. Other types of anti-social behaviour including vehicle nuisance (-20%, n198), inappropriate use of fireworks (-56%, n30), street drinking (-45%, n37) and substance misuse (-15%, n2) also experienced reductions.

Table 4

Rowdy and inconsiderate behaviour	Between June 2008 and May 2009	Between June 2009 and May 2010	% change and No
Basingstoke and Deane	4,945	4,008	-19% (n937)

5.2.3 The reduction achieved in Basingstoke and Deane is in line with 3OCU (-24%) and Hampshire (-22%).

5.2.4 Appendix 9 displays the monthly count of rowdy and inconsiderate behaviour across the borough. A 12 month moving average line which plots the trend for the past 12 months based on the previous 12 months performance, demonstrates that incidents are declining.

5.2.5 Rowdy and inconsiderate behaviour is affected by seasonality. Last year incidents increased by 13% (n278) between June and November compared to the six months December to May. During the summer incidents tend to occur later, peaking between 8pm and 11pm and a lot of

¹⁴ NSIR is a framework utilised by the police to record non crime incidents and non recordable crime in an effective and consistent way across England and Wales.

rowdy and inconsiderate behaviour is related to ball games and street drinking. In the winter months incidents were reported earlier on in the evening and peaked between 5pm and 9pm.

- 5.2.6 Last year, the top location for rowdy and inconsiderate behaviour was the town centre (11%, n436). Much of the rowdy and inconsiderate behaviour that occurs here is alcohol related with incidents increasing at the weekend and between midnight and 3am. The top locations in the town centre were the railway station (10%, n44), McDonalds (8%, n36), Liquid (8%, n34) and Bar Rock (5%, n21) and these were also the top locations the previous year. Over the next year the town centre will be an area that the CSP will focus on.
- 5.2.7 Subsequent top locations for rowdy and inconsiderate behaviour were Norden (9%, n358), Buckskin (9%, n347), South Ham (8%, n299) and Brighton Hill (7%, n270) in the urban sector and Tadley (5%, n187) and Oakley (2%, n97) in the rural area (see appendix 10 for details of all areas). These areas also featured as top locations for rowdy and inconsiderate behaviour based on the number of incidents per 1,000 population. However these and most other areas experienced reductions last year.
- 5.2.8 In February 2010 new accredited community safety patrols took to the streets in Basingstoke and Deane. The new service provided jointly by Basingstoke and Deane Borough Council and Hampshire County Council, has a team of 16 community safety patrol officers (CSPOs). They work closely with the community to identify and tackle local issues, reduce crime, deter anti-social behaviour, deal with environmental crimes and make residents feel safer and happier about their neighbourhood.
- 5.2.9 During the first four months the top incidents reported by the team were vulnerable vehicles and properties, graffiti, litter, vandalism and drugs. See appendix 11 for a full breakdown of incidents.
- 5.2.10 Housing associations also record their own data in relation to anti-social behaviour. Between June 2009 and May 2010 Sentinel received 375 complaints of anti-social behaviour relating to properties in the Basingstoke and Deane area. The most common complaints related to noise (38%, n144), animals/pets (13%, n47), and harassment and intimidation (8%, n30). Sovereign Kingfisher received 259 anti-social behaviour complaints. They were of a similar nature to those received by Sentinel with noise (45%, n116) and verbal abuse/harassment (15%, n39) being the most common. The strong partnership approach adopted by the CSP and housing associations means that incidents are dealt with effectively and efficiently and this will continue in the future with the focus being on repeat and vulnerable victims.

5.3 Criminal damage

5.3.1 Criminal damage is defined as ‘the intentional or reckless damage, or destruction, of another person’s property and includes damage to vehicles and buildings, graffiti and arson.’ Criminal damage is a crime, however it has many synergies with anti-social behaviour and the two often occur concurrently.

5.3.2 Criminal damage was historically the biggest volume crime in Basingstoke and Deane. It has been a priority for the CSP for the past three years, reducing significantly in that time. From June 2009 to May 2010 criminal damage offences fell by 28% (n771). This followed a 4% reduction the previous year. Six monthly (-19%, n213) and year-on-year (-33%, n438) comparisons display further reductions. Criminal damage accounted for 19% of total crime in the borough last year, down from 23% the previous year and is no longer the most common offence type.

Table 5

Criminal damage	Between June 2008 and May 2009	Between June 2009 and May 2010	% change and number
Basingstoke and Deane	2,798	2,027	-28% (n771)

5.3.3 The reduction achieved in Basingstoke and Deane has contributed to the reductions across 3OCU (-23%) and Hampshire (-22%). Nationally police recorded criminal damage reduced by 14% and British Crime Survey results showed an 11% fall.

5.3.4 Family group comparisons using iQuanta (June 2009 to May 2010) show that compared to 15 other areas with some similar characteristics, Basingstoke and Deane are 12th for criminal damage with 12.6 crimes per 1,000 residents. The average for the group was 11.6. This is a vast improvement on last year when it was the worst performing area in the family group.

5.3.5 Criminal damage (2009/10) in Basingstoke and Deane has been examined. Offences increased during the summer months, with July and August experiencing the most reports. Offences also increased at the weekend and peaked on Mondays. The peak reporting time was between 8am and 10am, although since discovery time is significant, it is expected that this is not actually the time when most damage occurs. Aside from the early morning increase, offences were significantly more frequent during the evening and it is anticipated that this is when the real peak in offending occurs.

5.3.6 The types of criminal damage most commonly occurring in Basingstoke and Deane were damage to vehicles (37%, n769), other criminal damage (26%, n540), dwellings (21%, n428) and other buildings (11%, n219) (see appendix 12).

5.3.7 Most areas experienced reductions in criminal damage last year (see appendix 13) and Norden was no exception, offences reduced by 42% (n144). Because of its size, close proximity to the town centre and rise in building and development work Norden has historically had more criminal damage than other wards. It also has, just after Popley East, the second highest rate of criminal damage per 1,000 population. In Norden damage to vehicles and dwellings were the most common. Reports were most frequent Friday to Monday and the peak reporting time was 10am.

5.4 Arson

5.4.1 Arson is a form of criminal damage and therefore has links with anti-social behaviour. It is defined as 'criminal damage where property is destroyed or damaged by fire.' Fires are categorised as:

- primary, where damage occurs to property with an identifiable owner (such as fires in residential dwellings, non-residential business properties and vehicles)
- secondary, where property ownership does not apply (such as rubbish bin fires, bonfires and fires occurring in open areas).

5.4.2 Hampshire Fire and Rescue Service record data in relation to incidents of arson, and during 2009/10 the Basingstoke and Deane group recorded 194 incidents of arson. This is a 28% (n77) reduction on the previous year and follows an 11% reduction in 2008/09.

5.4.3 Incidents of arson usually increase in the autumn around bonfire night. However over the last year arson was much higher during spring and summer¹⁵ (80%, n156) than in the winter months. This was partially due to a rise in grass fires, up 73% (n32) on 2008/09. Arson occurred fairly evenly across the week with a slight rise at the weekend and peaks between 6pm and 11pm.

5.4.4 Almost three quarters (73%, n142) of arsons reported between June 2009 and May 2010 were classed as secondary fires. Of these grass (56%, n80) and refuse (n55) fires were most common. The remaining 27% (n52) of arsons were primary fires, with vehicle fires (54%, n28) being the most widespread.

5.4.5 Where details were available (84%, n163) the top locations for arson last year were Tadley (16%, n26) and Brighton Hill (12%, n20). In Tadley more than 80% (n21) were grass fires and in Brighton Hill there were ten vehicle fires, nine of which occurred between June and August in two streets with similar modus operandi.

¹⁵ June 09, July 09, August 09, September 09, April 10 and May 10.

5.5 Graffiti

- 5.5.1 The Anti-Social Behaviour Act (2003) defines graffiti as the 'illegal or unauthorised defacing of a building, wall, or other edifice or object, by painting, writing, soiling, marking or other defacing by whatever means.' Graffiti is classified as criminal damage under the Criminal Damage Act (1971) and as such has links with anti-social behaviour.
- 5.5.2 In the last year, June 2009 to May 2010, 359 reports of graffiti were made to the Street Care Team at Basingstoke and Deane Borough Council. This is a significant reduction (-61%, n565) on the previous year, when 924 reports were received.
- 5.5.3 The area with the highest number of reports of graffiti was Brighton Hill (20%, n71) where one particular resident makes regular reports. Eastrop also experienced high levels of graffiti (19%, n66). London Road (20%, n13) and Crossborough Hill (18%, n12) were the top locations and this is most likely because large groups of people congregate here.

5.6 Achievements

- 5.6.1 Over the past 12 months Basingstoke and Deane CSP has undertaken various initiatives which have contributed to reductions in anti-social behaviour and criminal damage, such as:
- The CSP continues to support the Summer Streetz school holiday diversionary activity programme. The aim is to engage with young people aged between 11 and 17 who are at risk of committing anti-social behaviour and provide a range of activities and opportunities that the participants find enjoyable and fun, whilst contributing to a reduction in crime and anti-social behaviour. Last summer, activities were piloted in three areas, Brighton Hill, South Ham and Hatch Warren. Levels of rowdy and inconsiderate behaviour reduced in all three areas (Brighton Hill (-46%), South Ham (-27%) and Hatch Warren (-42%)) during the Summer Streetz programme compared to the same period in 2008 when there was no programme. The reductions in these areas were also greater than the reduction across the borough.
 - As of July 2010 Basingstoke and Deane has 14 people on Acceptable Behaviour Contracts¹⁶, 13 young people and one adult. There are also two Dog Owner Control Contracts¹⁷ in place for adults.

¹⁶ An Acceptable Behaviour Contract (ABC) is a voluntary written agreement between an individual and relevant authorities in which the person agrees not to carry out a series of identifiable behaviours which have been defined as anti-social

¹⁷ Dog Owner Control Contracts are used to give guidance to the owners of dogs who have the potential to become an issue in public

- The Problem Solving Core Group meets to discuss complex anti-social behaviour cases and agree a programme of interventions. During the last year 24 new cases were referred. 96% of all cases discussed were closed by the PSCG within 2 meetings.

- The fire service, supported by the partnership, runs three programmes to tackle the issues of anti-social behaviour and criminal damage. Each initiative is a direct intervention targeted at the young people in the borough who are known to be involved in these behaviours. They are;
 - Local Intervention Fire Education (LIFE); a one week course based at the fire station for 12 to 16 year olds. The course gives young people a role model and communication and team work skills while also covering the consequences of actions and impact on victims. Two courses were run last year with 16 students successfully completing it.
 - Young Fire Fighters Association (YFA); a 12 month course at the fire station plus weekend commitments. This course is longer than LIFE but has similar aims. In this programme young people gain certificates for the completion of modules that are recognised by employers, such as first aid and manual handling. Last year 20 students successfully completed the YFA course.
 - Princes Trust (PT); a 12 week programme for 16 to 18 year olds which follows national guidance. This is externally accredited and provides young people with basic skills to attain employment at the end of the programme. Last year 12 students successfully completed the PT programme.

- Housing associations can take action against anti-social tenants. In partnership with other agencies Sentinel carried out three possession orders, two ASB injunctions and two evictions last year. Sovereign Kingfisher carried out three ASB injunctions.

- Section 116 of the Criminal Justice and Immigration Act (2008) introduced new powers. Police and local authorities, following consultation with the relevant CSP agencies, can now close and prevent access to any premises where it is believed that its use is associated with significant and persistent serious nuisance to members of the public. Between June 2009 and May 2010 two such closure orders were granted.

- The Junior Neighbourhood Team initiative has been trailed in two schools. A total of 40 students attended a programme which ran after school once a week for six weeks. The programme was based around the theme of living in a safer and greener environment and students were taught about six different issues related to crime and disorder. The initiative is currently being evaluated, but initial thoughts are that it will be rolled out in other schools next year.

- Anti-social behaviour training has been provided to partners and members of the public. Examples of people trained include the community safety patrolling officers and councillors.
- The Neighbourhood Management System (NMS), a system used to monitor emerging issues and cases of anti-social behaviour is now being used effectively by the majority of partners.
- An anti-social behaviour leaflet has been produced which details what anti-social behaviour is and how to report it. The leaflet is available via community information points and on the council's website.

5.7 Opportunities

Intelligence opportunities

- Effective engagement with communities
- Effective use of criminal damage signs to encourage reporting
- Use of Environmental Visual Audits to identify potential hazards
- Work closely with local communities including Neighbourhood Watch groups to identify issues and direct resources to risk areas
- Effective use of NTM and PSCG meetings and of NMS to share information

Prevention opportunities

- Deliver graffiti cleaning training to residents
- Roll the Junior Neighbourhood Team scheme out across the borough
- Identify, publish and distribute information about diversionary activities available in different areas and engage with young people through these diversionary activities
- Empower communities

Enforcement opportunities

- Regular joint tasking processes for all enforcement and street level officers through the NTM process
- Positive and robust action taken by agencies when dealing with anti-social behaviour
- Use of ABC, ASBO, Parenting Orders, Dog Contracts, Dispersal Orders, DPPO's and Community Reparation Orders
- Actively seek disorderly premises and crack house closures
- Work with housing associations in relation to ASBI's and demoted tenancies

6.0 SUBSTANCE MISUSE

6.1 Background

6.1.1 Substance misuse has played a prominent role in our society for many years with the affects of misuse becoming more widespread. Apart from the many physical and psychological health problems and dependencies that are a consequence of substance misuse, strong links have been established between crime and disorder.

6.2 Drugs

6.2.1 Reducing substance related offending has been a priority for the CSP since 2007. In order to reduce offences it is necessary to seek out offenders. Over the past year 60% (n258) more drug offences have been recorded in Basingstoke and Deane. Various police operations have been successful in identifying offenders and taking drugs off the streets of Basingstoke and Deane.

Table 6

Drug offences	Between June 2008 and May 2009	Between June 2009 and May 2010	% change and number
Basingstoke and Deane	433	691	+60% (n258)

6.2.2 In Basingstoke and Deane the number of recorded drug offences increased by more than across the 3OCU (+24%) and Hampshire (+9%), highlighting the level of pro-active policing in the borough.

6.2.3 In Basingstoke and Deane Class A (+308%, n188) and Class B (182%, n276) drug offences have seen an increase. The increase in Class A is a result of police operations (see 6.2.4) and the increase in Class B offences is attributable to the reclassification of cannabis from a Class C to Class B drug. Detection rates for both types of offences are high at 94% and 95% respectively.

6.2.4 Drug offences in the borough (2009/10) have been examined and increased significantly between November 2009 and February 2010. During this four month period almost half of all drug offences for the year occurred (49%, n339). The reason for this increase was a number of police operations including Op Ridings and Op Sheffield which resulted in increased arrests and occurrences for supplying or offering to supply heroin (n143). Apart from this, offences were fairly steady across the year (see appendix 14) and the majority related to possession of cannabis which peaked between 9pm and midnight.

- 6.2.5 As already mentioned a number of drug offences in 2009/10 related to police operations (24%, n163, Op Sheffield). The location for these offences has been recorded on Business Objects as BB Bucket Code and not under the Police Beats. Information relating to the location of drug offences will exclude these offences (see appendix 15 for all areas).
- 6.2.6 Excluding occurrences arising out of police operations drug offences last year were largely concentrated in the town centre (14%, n74), Eastrop (14%, n72) and Norden (13%, n66). These were also the top beats in 2008/09. In the town centre more than half of the offences (61%, n45) related to having possession of cannabis, and the next most widespread offence type was having possession of cocaine (14%, n10). Most offences involved the offender being stop checked and found to be in possession or offenders being detained for a separate offence and subsequently found with drugs on them. Town centre security was successful in picking up drug activity on the cameras, approximately 20% (n14) of offences were brought to the attention of the police in this way. Door staff also aided the police by detaining suspected drug offenders (7%, n5). It is likely that a large number of drug offences in the town centre were related to the night-time economy. Offences increased at the weekend and between 11pm and 1am.
- 6.2.7 In Eastrop and Norden the majority of offences related to possession of cannabis and cocaine. Statistics for Eastrop include the Police Station, and 31% (n22) of offences occurred here. People who had been arrested elsewhere for a separate offence were searched when they got to the station and found to have illegal substances in their possession.
- 6.2.8 Where information about offenders was available (68%, n469), 81% (n381) of drug offences were committed by adults aged 18 and over and 19% (n88) were committed by young offenders aged 10 to 17. Offences committed by young offenders tended to relate to cannabis (78%, n69) while adults tended to be involved with Class A substances. The peak age range for offenders was between 17 and 20 (40%, n188) and male offenders (93%, n438) were more common than females (7%, n33). The most common offender ethnicity was White and White North European (74%, n347). Data from the Drug and Alcohol Action Team (DAAT)¹⁸ also indicates that of the people in the borough receiving treatment for substance abuse (n322), the majority were male (70%, n266) and White British (88%, n284). The main age range for people receiving treatment was 25 to 29 (18%, n59), slightly higher than the peak age for committing offences.

6.3 Alcohol

- 6.3.1 A large proportion of crime committed across England and Wales is linked to alcohol. Violent crimes (59% of known offenders last year), criminal damage (55% of known offenders last

¹⁸ 1st January 2009 to 31st December 2009

year) and anti-social behaviour are often committed by people under the influence of alcohol. Nonetheless alcohol related offending reduced by 13% (n201) last year. Data obtained from Hampshire Constabulary Record Management System (RMS) shows that between 1 June 2009 and 31 May 2010 there were 1,317 offences in which the alcohol marker was ticked¹⁹, accounting for approximately 12% of total crime last year.

Table 7

Alcohol related offences	Between June 2008 and May 2009	Between June 2009 and May 2010	% change and number
Basingstoke and Deane	1,518	1,317	-13% (n201)

- 6.3.2 Local Alcohol Profiles for England (LAPE) (December 2009) show that levels of alcohol related offending in Basingstoke and Deane are in line with national figures. Overall, there were 8.14 alcohol related crimes per 1,000 population, putting Basingstoke and Deane 9th out of 14 areas in Hampshire (see appendix 16). There were 6.35 alcohol related violent crimes and 0.12 alcohol related sexual offences per 1,000 population.
- 6.3.3 Alcohol related offences in Basingstoke and Deane (2009/10) have been examined, and were fairly steady across the year apart from two noticeable peaks. The first in August can be linked to summer time drinking and the second peak in December is linked to the festive period. The time offences occur varies depending on the location. For example in the town centre where a large number of offences were linked to the night time economy, the peak time was Saturday (spill over from Friday night) and Sunday (spill over from Saturday night) between midnight and 3am. Outside of the town centre offences occurred throughout the evening and peaked between 8pm and 2am.
- 6.3.4 The types of alcohol related offences most commonly occurring in Basingstoke and Deane were assault (32%, n426), domestic disputes between adults (17%, n217), public order (15%, n201) and criminal damage (8%, n107). This is in line with results for the previous year. As with time and date factors, offence types vary depending on the location. In the town centre the majority of offences were assault and public order related. Away from the town centre, assault remained the top offence type, but domestic disputes were the subsequent most widespread offence type.
- 6.3.5 The town centre was the top location for alcohol related offences. Just under a quarter (24%, n314) of all such offences occurred here, up from a fifth of all offences last year. Data obtained from South Central Ambulance Service (April to December 2009) further supports this as the top three locations for potential alcohol related incidents were in the town centre. A total of 41 incidents were recorded at the railway station (RG21 5NE), 39 at Liquid (RG21 7BE), and 23 at Lloyds Bar (RG21 7BB) (see appendix 17).

¹⁹ Alcohol related offences data is reliant on the alcohol marker being ticked.

6.4 Achievements

6.4.1 Over the past year the CSP has done various things to tackle substance misuse, including:

- Part 1 of the Anti-Social Behaviour Act (2003) introduced new powers to police. After consultation with the local authority, the police can close, for up to three months, any premises used in connection with the production, supply or use of Class A drugs, associated with the occurrence of disorder or serious nuisance. From June 2009 to May 2010 eight premises were closed using this legislation, a 167% (n5) increase on the previous year.
- There are currently seven active Designated Public Places Orders (DPPOs) in Basingstoke and Deane²⁰. A recent review of one particular DPPO (Kingsclere) has shown that it has had a positive impact on the perception of crime and disorder in the area and levels of anti-social behaviour and alcohol related offences have reduced.
- The police in Basingstoke and Deane have run several successful operations targeting drug dealers in the district. Op Ridings 5 in November 2009 and Op Ridings 6 in March and April 2010 targeted individuals known for Class A drug trafficking. A total of 54 arrests were made as a result of the two operations.
- An alcohol awareness session was provided to 150 year 10 students at the Hurst School as part of the Basingstoke sex and relationship educational virtual team.
- National tackling drugs week took place from 8 to 12 June 2009. To coincide with this, Basingstoke and Deane Borough Council attended a Youth of Peace meeting for the Black Minority Ethnic (BME) community. An information stand was available with drugs and alcohol information and 30 young people visited the stand.
- Joint visits to licensed premises have been carried out by Basingstoke and Deane Borough Council Licensing team, the police and fire service. The visits provided a means of routinely checking licensing conditions, fire safety and crime and disorder. More visits are planned for the coming year.
- An alcohol awareness campaign has been screened at the Vue Cinema in the town centre since August 2008. The campaign has covered various elements of alcohol awareness including personal safety and the penalties of purchasing alcohol on behalf of under 18s.

²⁰ Kingsclere, Town Centre, Town Centre extension, Brighton Hill, Oakley, Overton and Chineham

6.5 Opportunities

Intelligence opportunities

- Identify the route of alcohol from retailer to youth
- Engage with communities and encourage reporting of suspicious activity/drug dealing
- Work with the PPO team to identify current and emerging drug trends in the borough
- Effective use of Emergency Department project data and cross referencing with police data

Prevention opportunities

- Carry out test purchase and proxy sales operations in the borough
- Work closely with licensees and bar staff
- Work closely with licensed premises in the town centre
- Education programmes for identified target groups
- Effective use of alcohol testing strips

Enforcement opportunities

- Enforce tough penalties on licensed premises that continually break the law
- Work in partnership in relation to insurgent drug dealers and crack house closure requirements
- Carry out drug and alcohol testing
- Review of licensing objectives and actions of licensees

7.0 ACQUISITIVE CRIME

7.1 Background

7.1.1 Acquisitive crime describes 'offences where the perpetrator derives material gain from the crime.' This includes robbery, burglary, vehicle crime, theft and fraud and forgery. Robbery is examined in section 4.4.

7.2 Burglary

7.2.1 For the past year, because of a rise in offences in 2008/09, burglary has been a priority for the Basingstoke and Deane CSP. There were 763 fewer offences from June 2009 to May 2010 signifying a 38% reduction, greater than any other reduction achieved in the borough. Broken down, burglary dwelling reduced by 35% (n238) and burglary non dwelling reduced by 39% (n525).

Table 8

Basingstoke and Deane	Between June 2008 and May 2009	Between June 2009 and May 2010	% change and number	Between June 2007 and May 2008	Between June 2009 and May 2010	% change and number
Burglary dwelling	675	437	-35% (n238)	453	437	-4% (n16)
Burglary non dwelling	1,357	832	-39% (n525)	920	832	-10% (n88)

7.2.2 Burglary dwelling offences (2009/10) have been examined. Offences were fairly steady across the year with slight peaks in September, December and March²¹. Peaks usually occur in line with clocks going backwards in October and forwards in March. The increase in December is likely due to increased goods at home because of Christmas. The peak time for reporting was between 2pm and 6pm, but discovery time is significant, and this may not actually be the peak time for offences. It is suggested that a large number of burglaries occur during the day when the occupants are out at work and are then reported when they return and notice things missing. There were 32 car key burglaries and 12 distraction burglaries in the borough last year. The top locations for burglary dwelling were South Ham (11%, n48), Brighton Hill (9%, n41) and Norden (9%, n41) and each of these areas experienced reductions based on the previous year.

²¹ It is important to be aware that figures are highly dependant on which offenders are locked up/out in the community as one prolific burglar can impact dramatically on figures.

7.2.3 A new trend of breaking into vacant dwellings and stealing copper piping, appliances and builders tools has been identified since April 2010. This will continue to be monitored by the police through the Tasking Coordinating Group (TCG) process.

7.2.4 Burglary non dwelling (2009/10) has also been examined. As with dwelling offences, peaks occurred in October and March in line with the clocks changing. The peak time for reporting was between 8am and 10am and it is anticipated that such offences are reported in the morning as they tend to occur overnight. Shed and garage break-ins were most common with garden machinery and tools being taken. The location with the most offences last year was Brighton Hill and this was also the top location in 2008/09. Rural areas of the borough are affected just as much as the urban beats for non dwelling offences. Since the beginning of 2010 rural sheds and garages have been targeted and there have been several incidents of plant machinery being taken.

7.3 Vehicle crime

7.3.1 Vehicle crime has continued to fall and last year offences reduced by 25% (n275). Reductions were seen in both theft of (-28%, n83) and from (-24%, n192) a motor vehicle. Vehicle crime has contributed 8% of total crime for the past two years and compared to our most similar family groups we rank 7th out of 15 areas.

Table 9

Vehicle crime	Between June 2008 and May 2009	Between June 2009 and May 2010	% change and number
Basingstoke and Deane	1109	834	-25% (n275)

7.4 Theft

7.4.1 Theft reduced by 11% (n311) last year. Both other theft and handling (-17%, 292) and shop theft (-2%, n19) experienced reductions. Theft contributed 23% of total crime in the borough, second only to violent crime. Despite this, Basingstoke and Deane CSP is currently (iQuanta, June 2009 to May 2010) the best performing area in the most similar family group for other theft and handling. It is 13th out of 15 areas for shop theft and this is likely to be a result of Basingstoke and Deane having a large town centre where 33% (n834) of offences last year occurred.

Table 10

Theft	Between June 2008 and May 2009	Between June 2009 and May 2010	% change and number
Basingstoke and Deane	2814	2503	-17% (n292)

7.5 Fraud and forgery

7.5.1 Fraud and forgery increased by 13% (n48) in 2009/10. Six monthly (+18%, n36) and year on year (+31%, n55) comparisons also show increases. The offences contribute just 4% of total crime in the borough.

Table 11

Fraud and forgery	Between June 2008 and May 2009	Between June 2009 and May 2010	% change and number
Basingstoke and Deane	384	432	+13% (n48)

7.5.2 Fraud and forgery offences can be broken down into different categories. The majority were not serious fraud offences such as card fraud but involved making off without payment (64%, n273) which usually involved fuel (89%, n242). More than half of these offences occurred at two locations; Morrisons in Brookvale and British Petroleum in Oakley.

7.6 Achievements

7.6.1 The CSP has done various things which have contributed to reductions in acquisitive crime. Including:

- Purchasing door, window and shed alarms which are distributed to identified vulnerable people and properties to prevent burglaries and make people feel safer in their homes.
- Launching the bells campaign in December 2008. Since then more than 2,000 bells have been handed out to members of the public to prevent purse thefts.
- A number of press articles have been released warning people to be vigilant and keep windows and doors secured.

7.7 Opportunities

Intelligence opportunities

- Effective use of Crime Stoppers
- Encourage reporting of all acquisitive crime and attempted crimes
- Move towards an improved process for the identification, analysis, understanding and targeting of prolific, persistent and multiple arrest offenders.

Prevention opportunities

- Continue to promote Smart Water for its preventative potential
- Continue to provide residents with bells to attach to purses, wallets and bags to help deter thieves
- Distribute door and window alarms to vulnerable people and properties for example through the 'Lights On' campaign
- Work with the PPO team in relation to prolific, persistent and multiple arrest offenders
- Support the police in targeted operations
- Work with all partners to develop a CSP strategy and operational approach towards reducing reoffending and to identify and impact upon the specific issues that drive behaviour.

Enforcement opportunities

- Enforce shop bans for serial offenders
- Effective use of Smart Water for its forensic potential

8.0 YOUTH PROFILE

8.1 Background

8.1.1 Data in relation to young offenders aged between 10²² and 17 has been provided by the Wessex Youth Offending Team (YOT)²³. YOT is a multi-disciplinary organisation that works in Children's Services and the Criminal Justice System. YOT was formed in 1998 in response to the Crime and Disorder Act and has one overriding aim, to prevent offending by children and young people. The YOT's work falls into three key areas:

- preventing crime and anti-social behaviour
- community supervision of offenders
- resettlement of young people from custody.

8.2 Performance

8.2.1 Last year in Basingstoke and Deane, the number of offences committed by young people aged 10 to 17 who received a substantive outcome reduced by 5% (n46), from 849 to 803. This is on the back of a 23% reduction in 2008/09. The number of first time entrants to the Youth Justice System has also continued to fall (-31%, n76) and again this was on the back of a 17% reduction in 2008/09.

8.2.2 There were significantly more male young offenders (73%, n582) than females (27%, n221). The peak age for offending was 17 and the number of offenders increased with age. Offences varied depending on age and gender. For example more than half of offences committed by young females were theft and handling while young males committed the majority of violence against the person, criminal damage and drug offences (see appendix 18).

8.2.3 Last year theft and handling was the most common offence type committed by young people (29%, n224). Subsequently violence against the person (16%, n122), criminal damage (14%, n104), public order (10%, n74) and drug offences (8%, n66) were the most widespread. Apart from drug offences now being more common than motoring offences, the top offence types are unchanged from last year.

8.2.4 Despite a reduction in overall offending by young people receiving a substantive outcome, including reductions in violence against the person (-30%, n52) and criminal damage (-12%, n14), some offences have seen increases. For example sexual offences increased by 100%

²² Ten is the minimum age of criminal responsibility

²³ Wessex YOT is the largest in the country, covering four local authority areas including Hampshire

from none in 2008/09 to six in 2009/10. Offenders were all male, four were just 12 years old and two were 15. In addition drug offences committed by young people rose by 29% last year from 51 to 66 crimes. Offenders were mostly 15 to 17 year old males.

8.3 Achievements

8.3.1 Throughout 2009/10 the CSP has undertaken various projects in order to reduce youth crime. These include:

- The Acceptable Behaviour Contract (ABC) scheme in the borough is very successful. Individuals, including young people and adults who, because of their behaviour have come to the attention of one or more partners, are invited to sign a voluntary agreement. They agree not to carry out a series of identifiable behaviours which have been defined as anti-social. The ABC is a supportive intervention used to try and prevent individuals from entering the Criminal Justice System. As of July 2010 there were 14 people on ABCs in the borough.
- Provided by the Youth Offending Team (YOT), Basingstoke Youth Inclusion Support Panel (YISP) works with identified individuals aged between eight and 13 who are currently, and who are 'at risk' of offending and committing anti-social behaviour. Some of the activities carried out by YISP include, diversionary activities and one to one and small group sessions covering topics such as anger management, safety and awareness of knives and family problem solving.
- A yellow card scheme has been adopted by the Community Safety Patrol Officers. They issue yellow cards to people who they witness committing anti-social behaviour and then send a letter home to parents and guardians. If they are issued with two or more yellow cards they are considered for an Acceptable Behaviour Contract. The scheme is effective in dealing with low level incidents and makes the key link home via letters to parents and guardians.
- Every youth who is charged with an offensive weapon or knife crime offence, or who is finally warned must attend a session on knife crime with the YOT. The session aims to educate the individual about the implications and consequences of their behaviour.
- Sex or serious violent young offenders are made subject of a Multi Agency Public Protection Arrangements (MAPPA) to reduce the risk that they may pose in the community.

8.4 Opportunities

Intelligence opportunities

- Effective engagement with young people
- Work closely with the YISP, YOT and Youth Forum
- Share intelligence and information between agencies

Prevention opportunities

- Continued use of ABC's as a supportive measure
- Work closely with the YOT and YISP to identify individuals displaying problematic behaviour before it escalates
- Put on and encourage participation in diversionary activities
- Issue warning letters
- Work closely with HFRS on things like the LIFE course

Enforcement opportunities

- Use of ABC, ASBI, ASBOs and Final Warnings
- Drug and alcohol testing

9.0 PROLIFIC AND PRIORITY OFFENDERS

9.1 Background

9.1.1 The Prolific and Priority Offenders (PPO) programme is a key government crime reduction initiative introduced by the government in 2004. It requires CSP's to identify adult offenders whose levels of criminality (primarily, but not exclusively, 'serious acquisitive crime'²⁴) is causing the greatest harm in their local community. The aim is, within a multi-agency partnership environment, to prioritise agency rehabilitative interventions and case management to reduce or stop their criminal activities, especially where that behaviour is driven by substance misuse, for example drugs and alcohol. The PPO programme is closely linked with the work and aims of the Drug Intervention Programme (DIP)²⁵.

9.1.2 Since 2007, the PPO programme for Basingstoke and Deane CSP has been collaboratively delivered as part of a joint scheme, RHINO, which is resourced and funded with three other CSPs in the north and east of Hampshire. This is managed by a co-located team of practitioners from police, probation and local authority staff.

9.2 Performance

9.2.1 Since 2008/09 the Home Office has monitored local PPO schemes performance against National Indicator 30 (NI 30), reducing re-offending rates of prolific offenders. The Home Office manages this process centrally using data based on the recorded convictions held within the Police National Computer (PNC) over a specific 12 month period.

9.2.2 Hampshire districts agreed a Local Area Agreement for 2008-11 which included annual targets in relation to NI30. Prior to April each year all CSPs submit a new list of their PPO cohort to the Home Office. Quarterly data is then produced by the Home Office for all schemes (at LSP level) and the data published on iQuanta. The latest available (to December 2009) figures for Hampshire LSP (all 11 districts but excluding Portsmouth, Southampton and IOW unitaries) shows approximately a 45% reduction in re-offending rates across all Hampshire PPOs²⁶.

9.3 The future

9.3.1 Plans are well advanced at county level for the development of Integrated Offender Management (IOM) structures and the commissioning of a single service provider who will

²⁴ Serious acquisitive crime includes domestic burglary, robbery and vehicle crime

²⁵ The DIP aims to engage drug-misusing offenders involved in the Criminal Justice system in formal addiction treatment and other support, thereby reducing drug related harm and reducing offending behaviour

²⁶ Approximate comparisons for the same time; Portsmouth +4%, Southampton +5% and IOW -44%

deliver rehabilitation intervention for work linked to the PPO programme, the DIP programme and Alcohol programme across Hampshire districts.

9.3.2 The planned commencement date for the IOM is 1 April 2011. At this point the single service provider will, in close liaison with criminal justice agencies, undertake rehabilitative intervention work with both statutory (under Probation supervision) and non-statutory (voluntary) offenders. It will also include working with those offenders on Drug Rehabilitation Requirement orders (DRR), and offenders identified under revised Drug and Alcohol Arrest Referral arrangements.

9.3.3 Hampshire County Council's plan is for three co-located IOM teams, staffed by practitioners from the police, probation and IOM service provider. The teams will be managed both strategically and operationally, on behalf of local CSPs, by an IOM steering group. One of the teams will be geographically based within the north east of Hampshire but the exact details are still under review. These changes will mean that the existing structure and governance arrangements developed under RHINO will cease to exist.

10.0 FEAR OF CRIME

10.1 Background

10.1.1 The fear of crime refers to 'the worry of being a victim of crime as opposed to the actual probability of being a victim.'

10.2 Public consultation

10.2.1 To obtain views on community safety issues in Basingstoke and Deane a community consultation survey was conducted in April and May 2010 by Miller Associates on behalf of the borough council. In total 608 residents responded to questions about community safety.

10.2.2 Respondents were asked about how safe they feel in different situations. A total of 88% (n538) said that they felt either fairly or very safe outside their home after dark. This is a considerable improvement on results of the 2008 Place survey, in which only 56% of respondents said they felt safe in this situation.

10.2.3 People felt less safe in the town centre after dark. Just 43% (n264) of respondents said they felt either fairly or very safe here. This figure corresponds with previous public consultation data²⁷.

10.2.4 Of the people who felt unsafe the top reasons for feeling unsafe were concern about young people hanging around, drunken and rowdy behaviour and the reputation of the area.

10.2.5 Most people surveyed (79%, n482) believed that anti-social behaviour in their area had either remained the same or got better over the past year. Just 11% (n67) thought it had got worse. The remaining 10% (n58) did not know.

10.2.6 Most people thought that they did have the opportunity to raise any community safety issues with the relevant authorities (66%, n403), 20% (n121) said that they did not and the remaining 14% (n82) did not know. Local surgeries came out as the most preferred means of raising concerns (30%, n184), followed by online surveys (27%, n167), questionnaires (27%, n163) and public events (9%, n54).

10.3 Unauthorised encampments

10.3.1 An unauthorised encampment is 'when an individual or group of individuals move onto a piece of land that they do not own, without the permission of the land owner.' Unauthorised

²⁷ Community Review, Residents' survey findings, Miller Associates Ltd 2008

encampments are a matter of civil trespass between the land owner and the individual(s) illegally camped on the land. Where an unauthorised encampment has been set up on Basingstoke and Deane land it is the responsibility of the council to follow a specific process to evict them.

- 10.3.2 The number of unauthorised encampments in the borough has fluctuated in recent years. Between June 2009 and May 2010 there were 51 unauthorised encampments in the borough and this is 28% (n11) more than the previous year. A total of 25 encampments were on Basingstoke and Deane land, representing a 92% (n12) rise.
- 10.3.3 In response to the growing number of unauthorised encampments in the borough the council is looking at its policies and procedures to ensure that they are effective. One element of this process has been a questionnaire to gain insight into the public's views and what more they would like to see being done. In total 476 responses were sent in. Respondents could tick multiple answers and results showed that the most common concerns in relation to unauthorised encampments were rubbish and litter (n383) and personal safety (n313). In total 342 respondents indicated that they would like to see increased use of defences and 227 said they would like to receive more information about particular encampments in the form of a newsletter.

10.4 Fly-tipping

- 10.4.1 Fly-tipping is the illegal dumping of waste. It varies from dumping small bags of rubbish to large items, such as fridges and mattresses, to waste from construction and demolition sites. Fly-tipping has significant social and financial costs to the public. It can make an area appear run down and uncared for, which could lead to an increased fear of crime and an actual increase in crime and anti-social behaviour. Members of the public should report fly-tipping to Basingstoke and Deane Borough Council.
- 10.4.2 Between June 2009 and May 2010, 1,804 fly-tips were reported to the council. This figure represents a 20% (n451) reduction on the previous year.
- 10.4.3 The areas of the borough experiencing the biggest problems with fly-tipping were Norden (n190), Buckskin (n189), Popley East (n146) and South Ham (n132). The majority of fly-tipping was low level, including black sacks, old electrical items and sofas.

10.5 Hate crime

- 10.5.1 A hate crime is defined as 'any hate incident, which constitutes a criminal offence, perceived by the victim or any other person, as being motivated by prejudice or hate.'²⁸

²⁸ Association of Chief Police Officers (ACPO) definition

10.5.2 From June 2009 to May 2010 75 hate crimes were reported to the police in Basingstoke and Deane, although under-reporting has been a significant issue. This is a 29% (n31) reduction on the previous year.

10.5.3 There are various types of hate offences. In the past year the most common were offences relating to race (79%, n59), sexual orientation (19%, n14), faith and religion (1%, n1) and disability (1%, n1).

10.6 Achievements

10.6.1 Reducing the fear of crime has been an underlying priority for the CSP for the past three years. Various projects have been undertaken, such as:

- Community Safety road shows, which provide an opportunity for residents to learn about what is being done to keep them safe. It also gives them a chance to let the CSP know how they feel, and what they see as the main issues in their communities. So far 10 road shows have taken place in identified strategic locations across the borough and more are planned for the upcoming year.
- The CSP has continued to promote Neighbourhood Watch and there are now almost 500 schemes running across Basingstoke and Deane.
- The council has produced a hate crime leaflet which covers all aspects of hate crime and details of how to report it.
- The CSP held a True Fingerprint of Crime event at the fire station and invited community leaders and members of the public. The event was fairly well attended. Guests listened to presentations and got involved in discussions about hate crime and other community safety issues in the borough. The next event is due to be held in September 2010.
- Basingstoke Multicultural Forum is represented by some Black and Minority Ethnic communities living in Basingstoke and Deane. Over the past year the forum has organised events including a multicultural evening event at Aldworth Science College attended by approximately 180 people, and a Living in Harmony event attended by partner agencies and members of the public.

10.7 Opportunities

Intelligence opportunities

- Ensure that the community feel well informed about the work of the CSP
- Examine the personal differences associated with fear so that tactical responses can be appropriately arranged
- Gather information from the public at Community Safety road shows
- Regularly conduct and use the results of public consultation data to help understand residents views on community safety
- Work closely with communities and community leaders to encourage the reporting of hate crimes

Prevention opportunities

- Effective use of Community Payback schemes
- Publicise success stories and work closely with police media to ensure unified messages
- Work with identified groups about perception and reality
- Community integration work to remove unhealthy stereotypes
- Hold 'True Fingerprint of Crime' and 'Community Safety road show' events in strategic locations across the borough
- Provide regular and up to date information about unauthorised encampments in the borough

Enforcement opportunities

- Priority approach to tackling signal offences (graffiti, fly-tipping and abandoned vehicles)
- High visibility patrols in problem areas identified through the NTM process

Basingstoke and Deane most similar family group list

- Peer comparisons in iQuanta are made using most similar comparison groups. These groups provide a benchmark for comparison of crime rates and other indicators with similar areas elsewhere in England and Wales. Such comparisons are useful because areas with similar geographical, demographic and socio-economic situations have been shown to have reasonable comparable levels of crime. Variations in crime rates between areas that are similar in character are likely to be due to other factors, such as efficiency of policing or working practises, it also helps to identify similar areas which are performing well, to promote the sharing of good practice.

Below is a list of most similar families in Basingstoke and Deane's group:

- Avon and Somerset – North Somerset
- Avon and Somerset – South Gloucestershire
- Bedfordshire – Central Bedfordshire
- Cambridgeshire – Huntingdonshire
- Hampshire – Basingstoke and Deane
- Hampshire – New Forest
- Hampshire – Test Valley
- Hertfordshire – Dacorum
- Hertfordshire – North Hertfordshire
- Kent – Maidstone
- Kent – Sevenoaks
- Kent – Tonbridge and Malling
- Thames Valley – Cherwell
- Thames Valley – West Oxfordshire
- Wiltshire – Wiltshire County

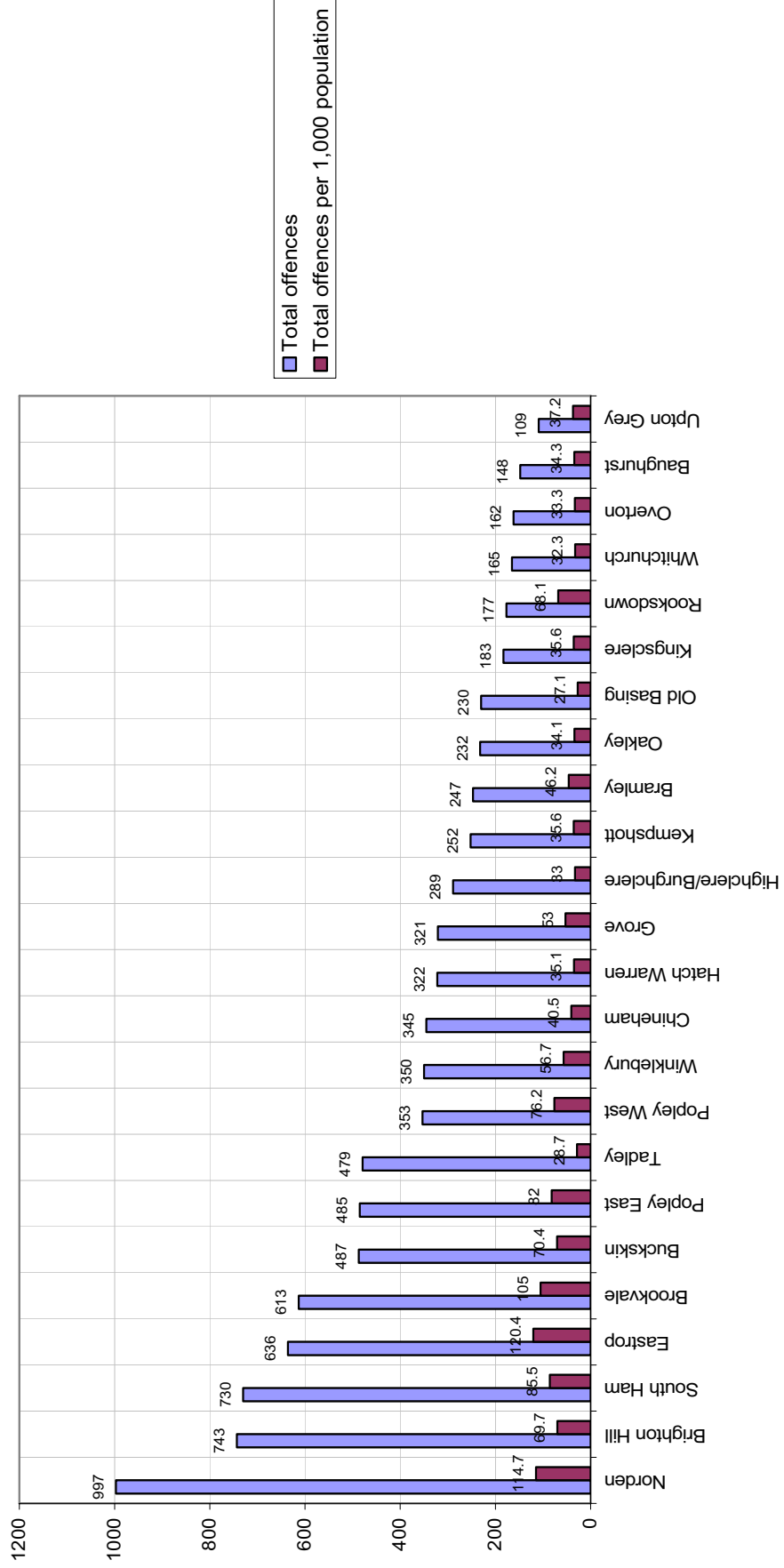
The 24 different variables taken into account when calculating CSP most similar groups are:

- Percentage of ACORN 1 households
- Percentage of ACORN 5 households
- Percentage of ACORN 2 households
- Percentage of ACORN 4 households
- Percentage of student households
- Percentage who have never worked
- Percentage in routine or semi-routine occupations
- Percentage of permanently sick or disabled
- Percentage of terraced households
- Output area (OA) density
- Percentage of overcrowded households
- Percentage of single adult households
- Percentage of single parent households
- Percentage of households with no working adults and dependant children
- Population sparsity
- Long-term unemployment per worker
- Long-term unemployment per claimant
- Percentage of 18-24 claimants
- Percentage of people on income support
- Number of retail and leisure outlets
- Bars per hectare
- Daytime population per hectare
- Daytime net inflow
- Percentage of population in hamlets or isolated dwellings

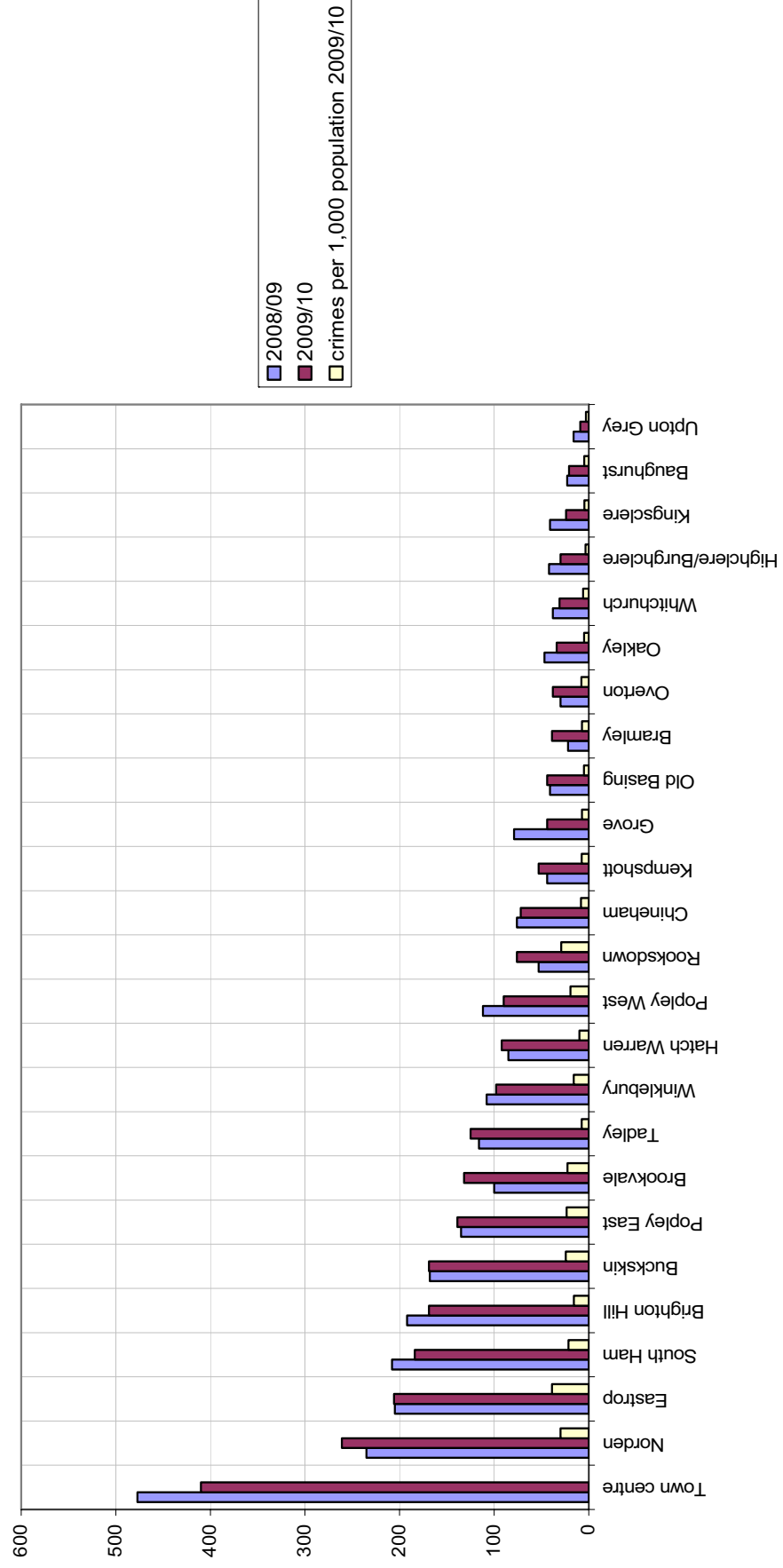
Hampshire police force areas

- Below is a list of Hampshire Police Force Areas;
- Basingstoke and Deane
- East Hampshire
- Eastleigh
- Fareham
- Gosport
- Hart
- Havant
- Isle of Wight
- New Forest
- Portsmouth
- Rushmoor
- Southampton
- Test Valley
- Winchester

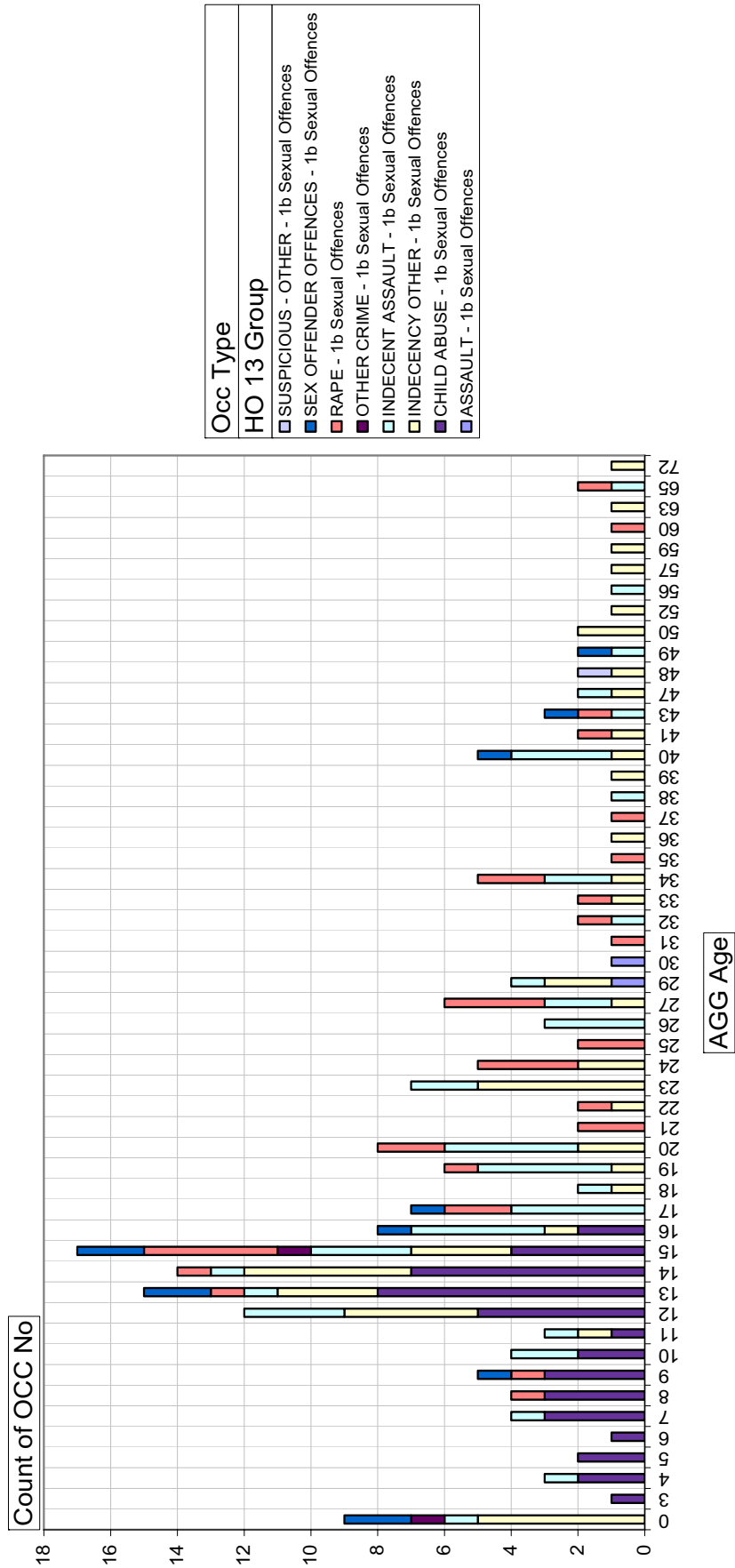
Total crime in Basingstoke and Deane 1 June 2009 to 31 May 2010
 (Source: Hampshire Constabulary Business Objects)



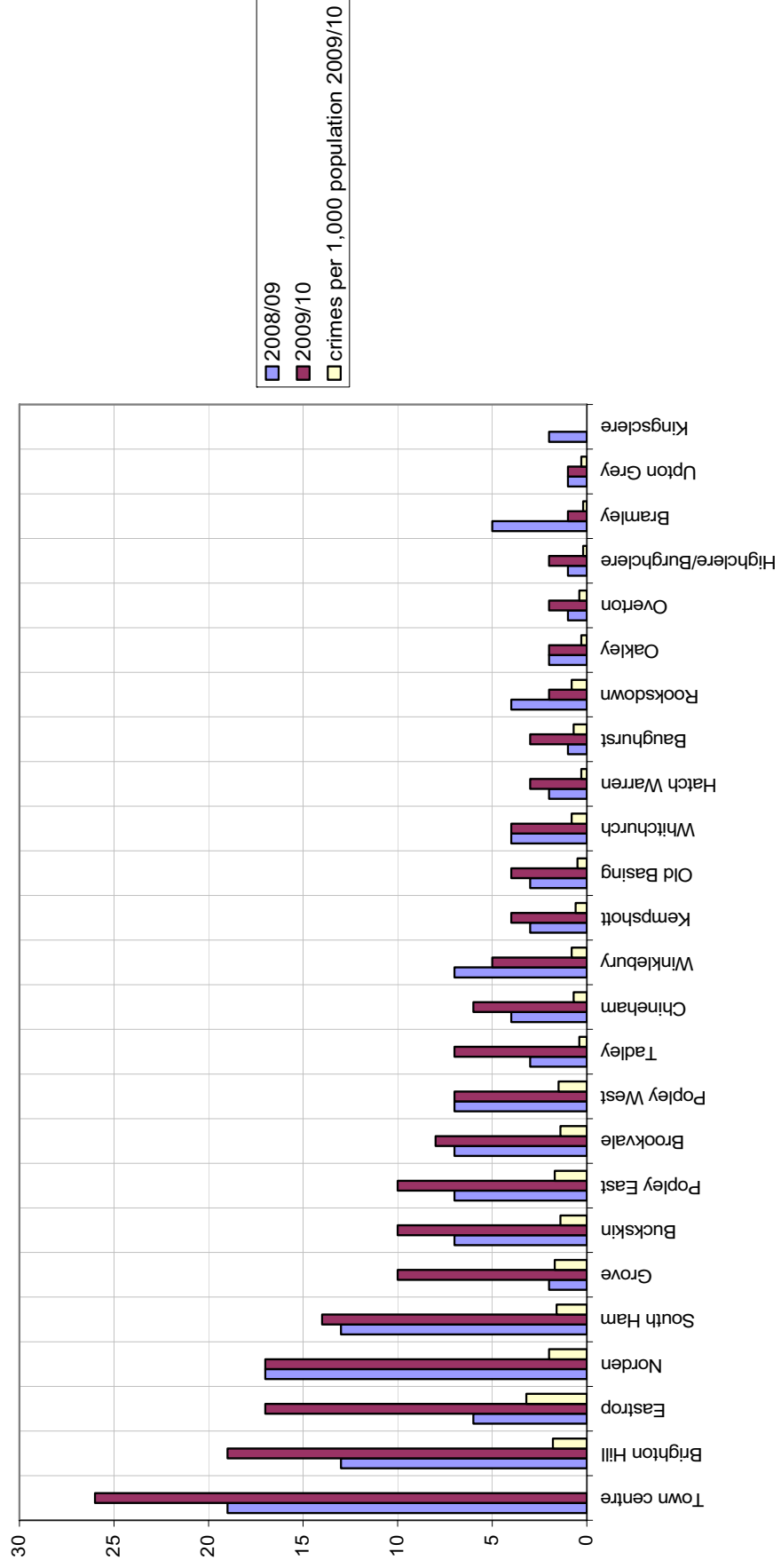
Violence against the person in Basingstoke and Deane
 (Source: Hampshire Constabulary Business Objects 'Strategic Assessment Violent Crime Report')



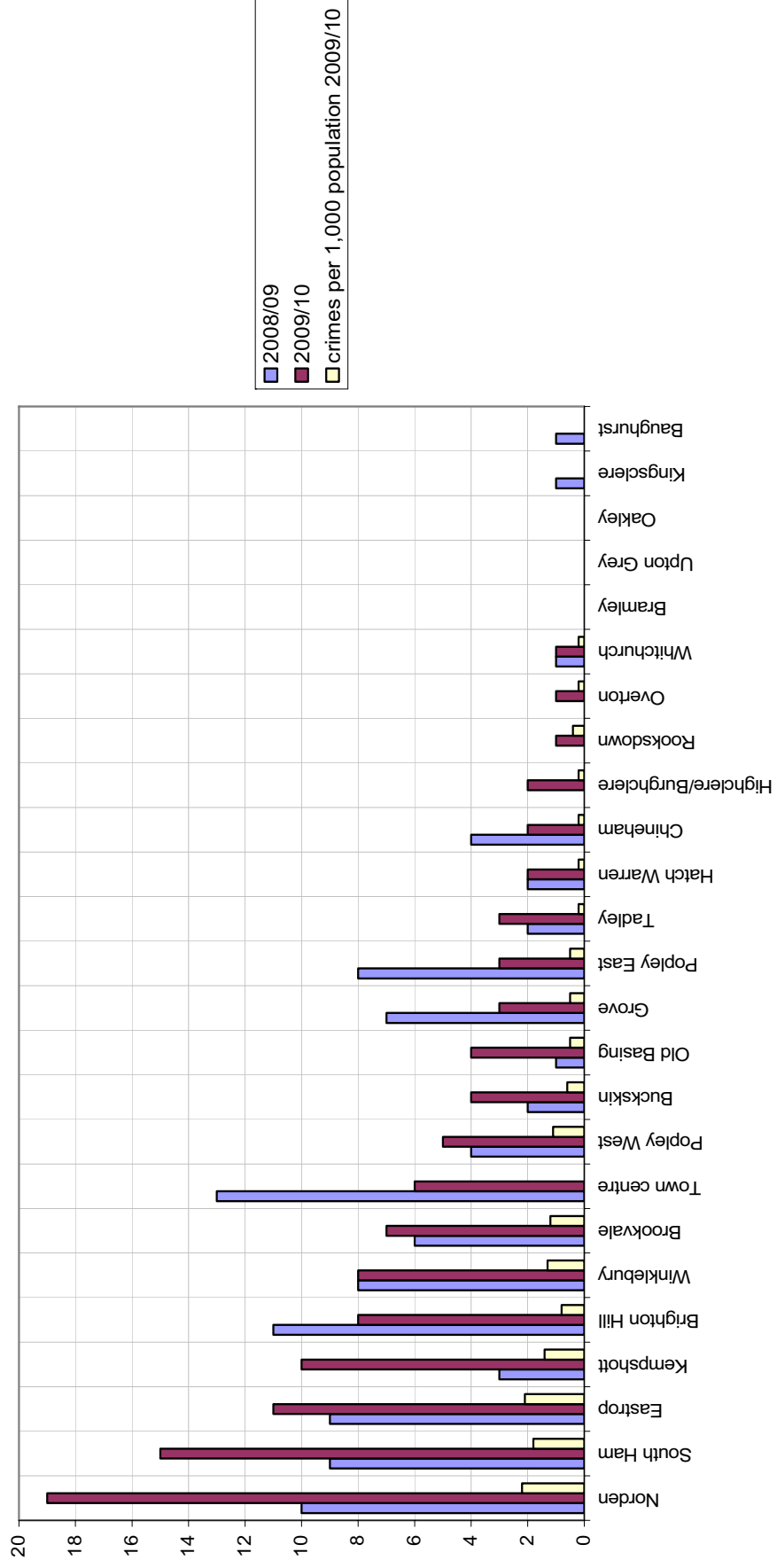
Victim profile for sexual offences in Basingstoke and Deane 2009/10
 (Source: Hampshire Constabulary Business Objects)



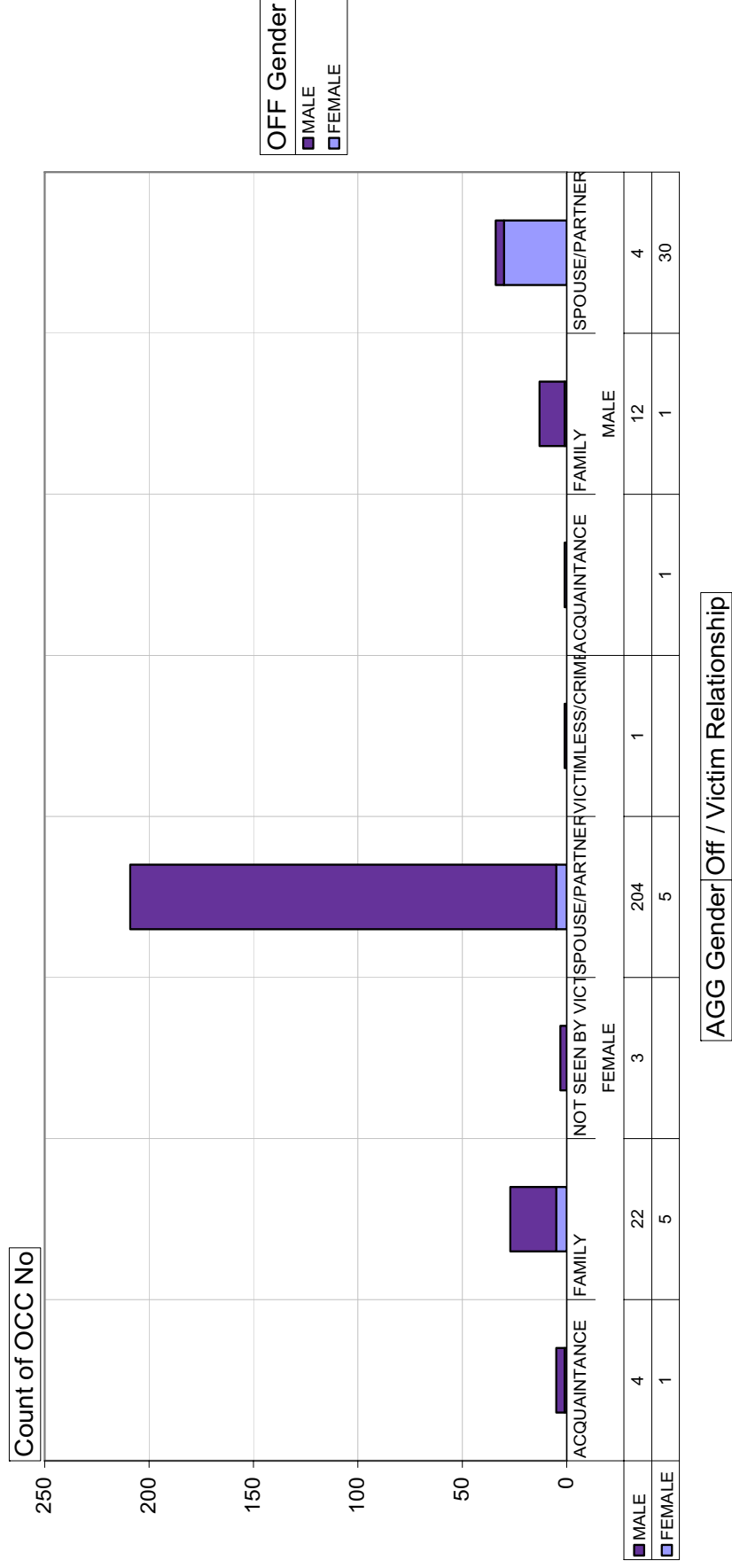
Sexual offences in Basingstoke and Deane
 (Source: Hampshire Constabulary Business Objects 'Strategic Assessment Violent crime Report')



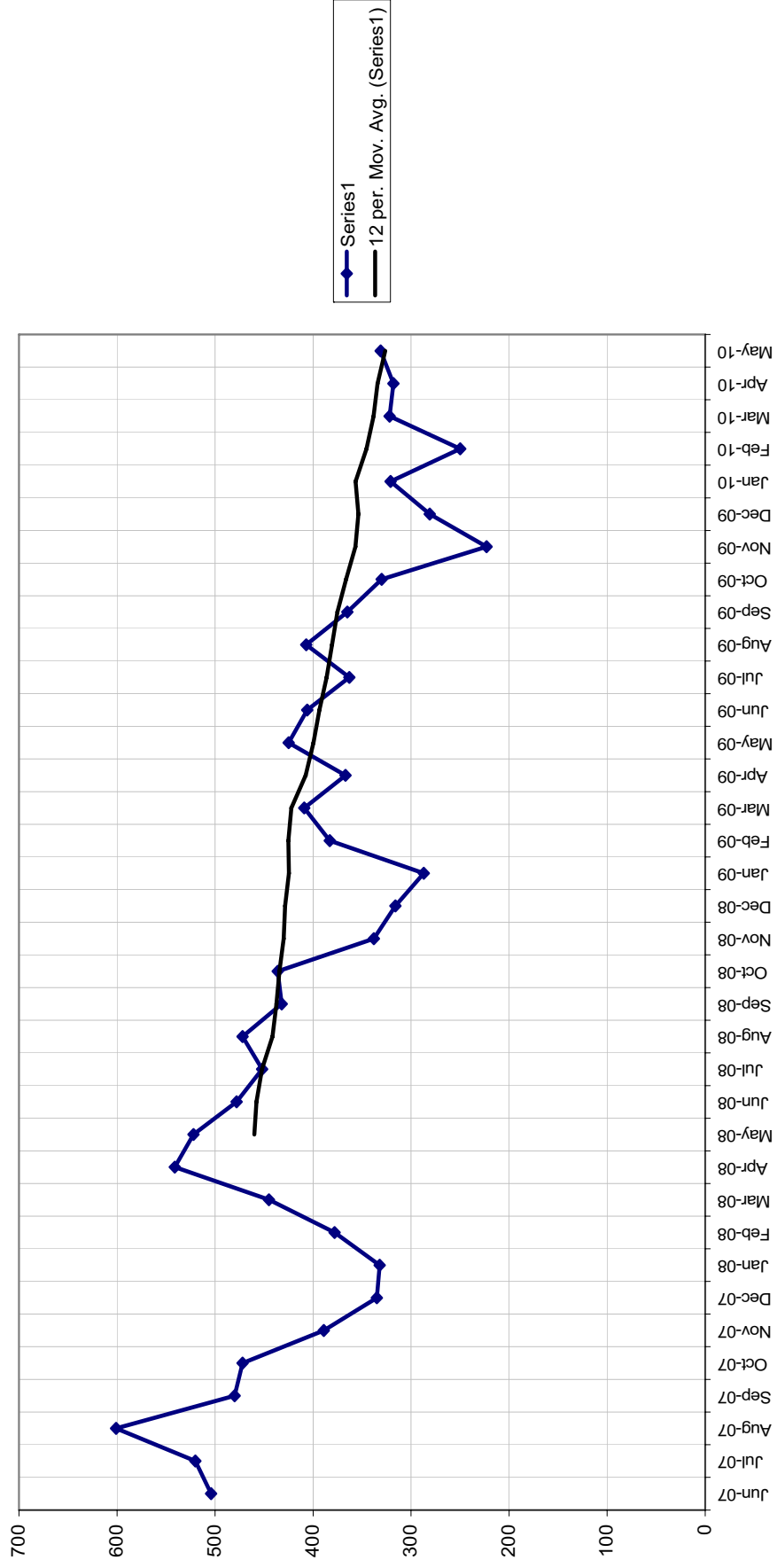
Robbery offences in Basingstoke and Deane
 (Source: Hampshire Constabulary Business Objects 'Strategic Assessment Violent Crime Report')



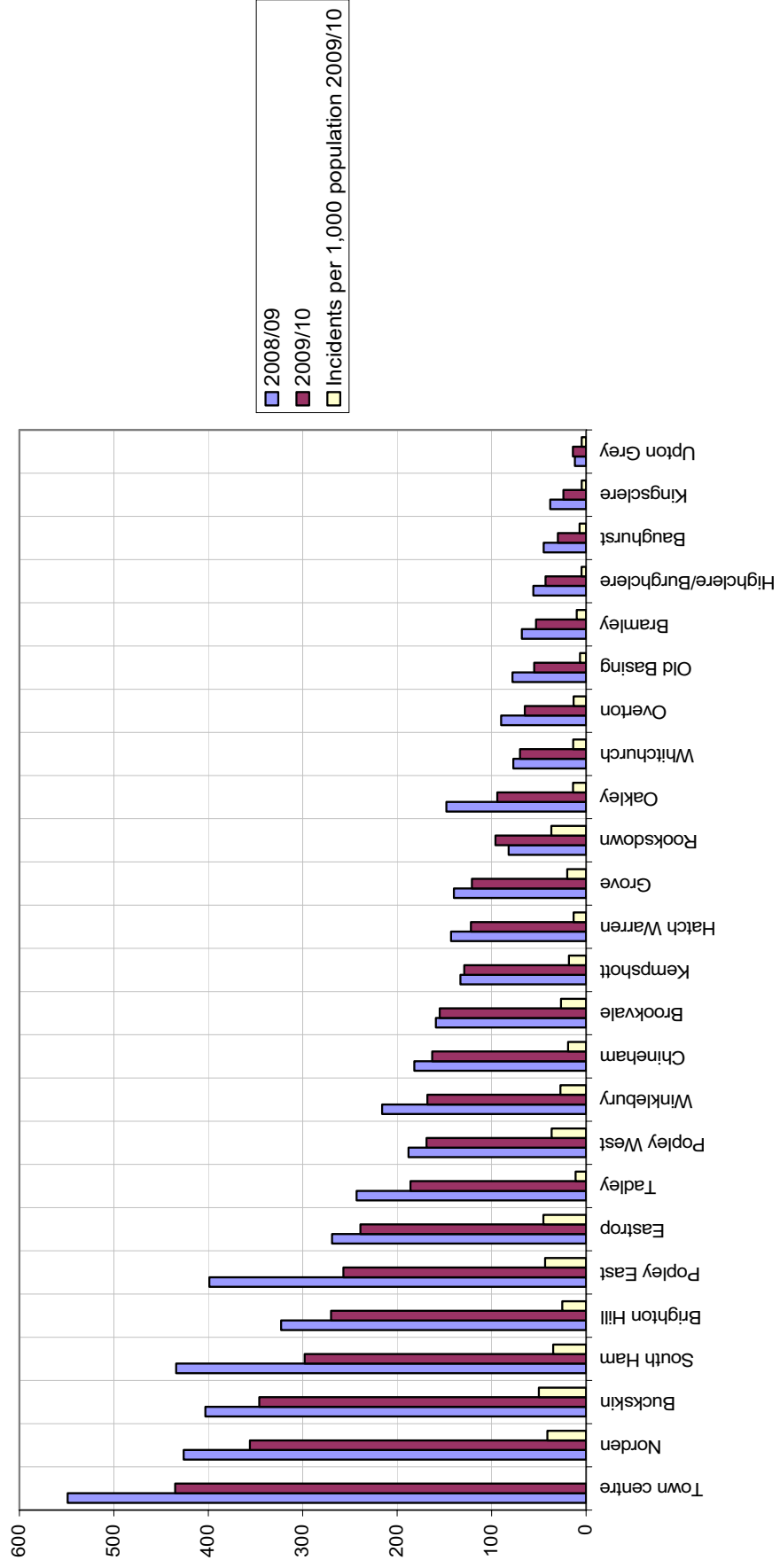
Domestic Crime in Basingstoke and Deane 2009/10
 (Source: Hampshire Constabulary Business Objects 'Strategic Assessment Domestic Crime Report')



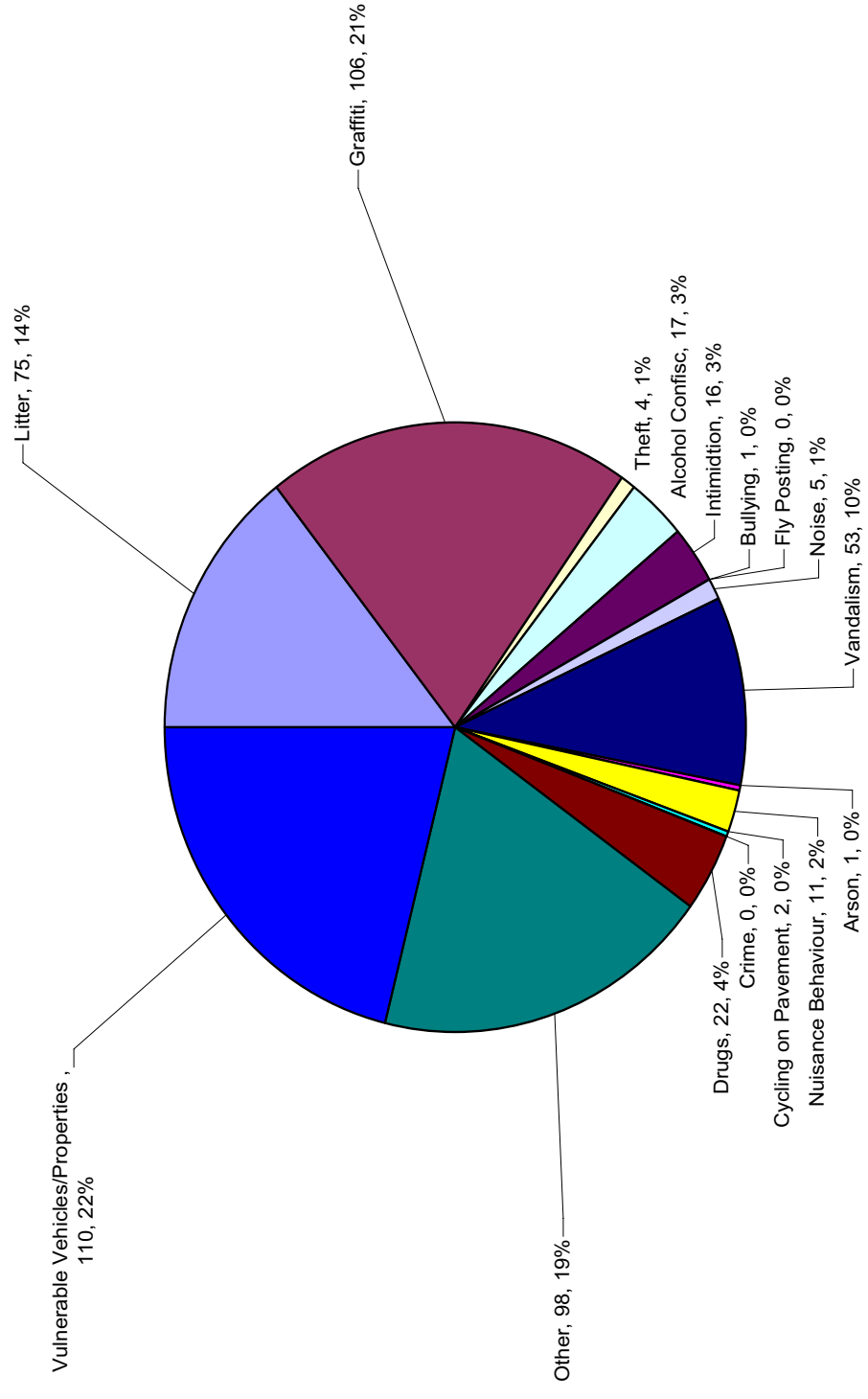
Rowdy and inconsiderate behaviour in Basingstoke and Deane
 (Source: Hampshire Constabulary Business Objects 'Strategic Assessment All Incidents Report')



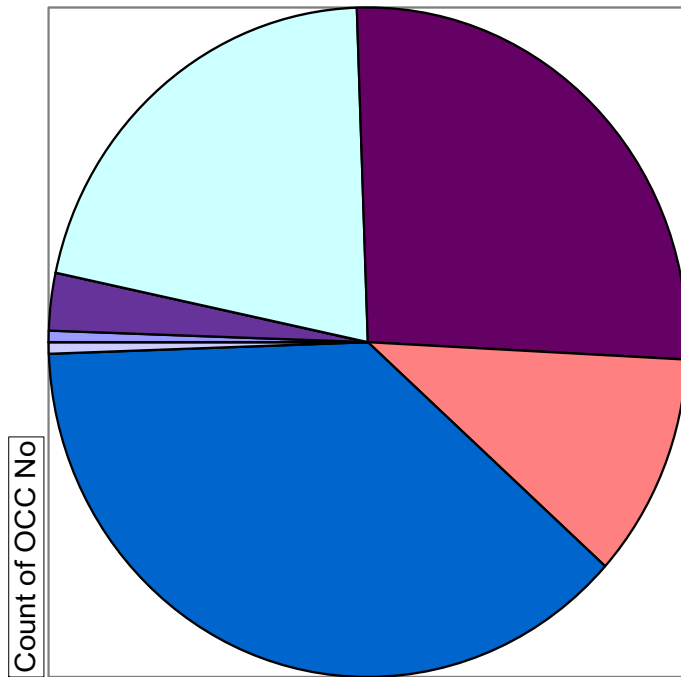
Rowdy and inconsiderate behaviour in Basingstoke and Deane
 (Source: Hampshire Constabulary Business Objects 'Strategic Assessment All Incidents Report')



Breakdown of incidents dealt with by the new joint Community Safety Patrol Officers
 (February 2010 to May 2010)

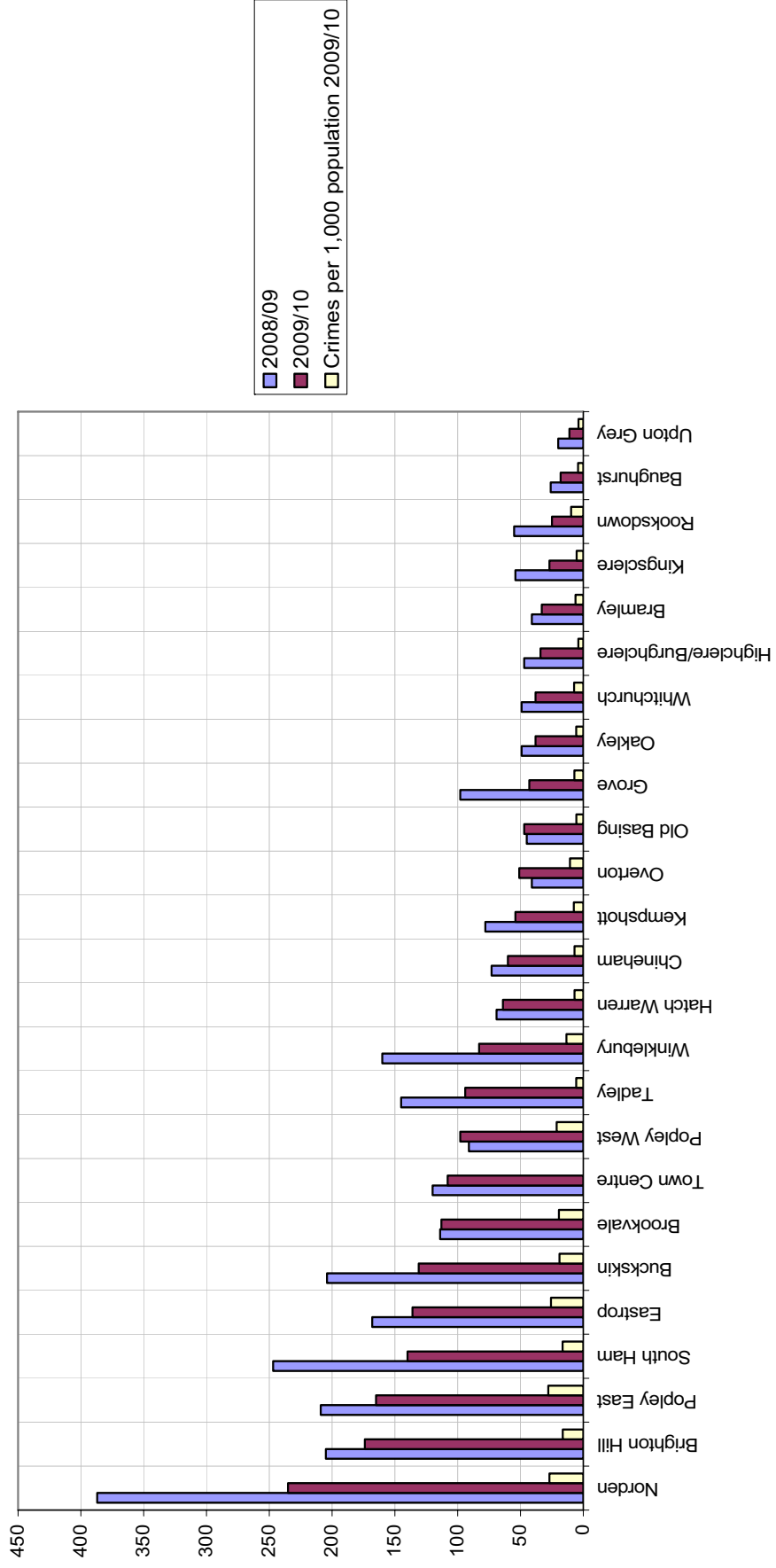


Breakdown of criminal damage in Basingstoke and Deane 2009/10
 (Source: Hampshire Constabulary Business Objects)

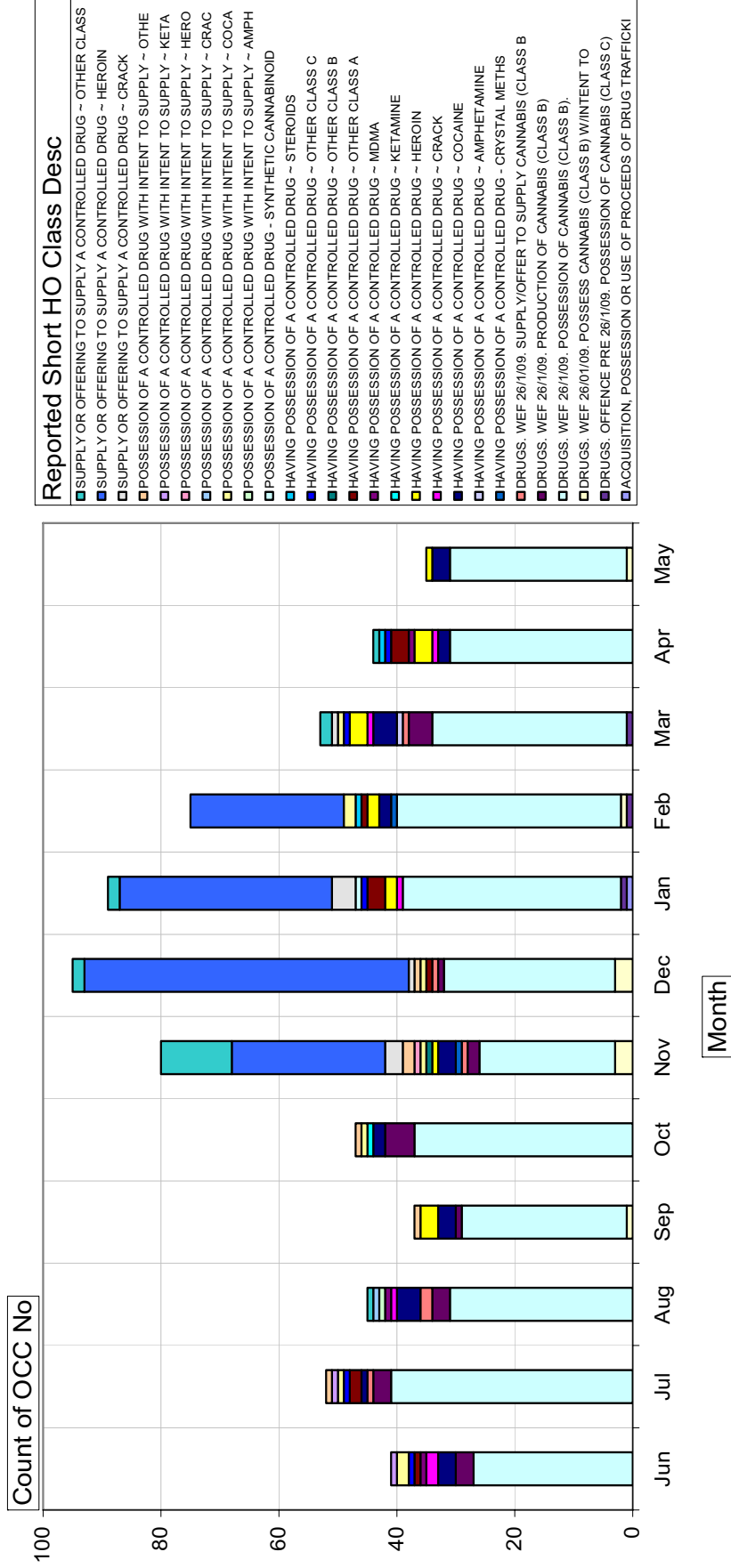


Reported Short HO Class Desc
ARSON ENDANGERING LIFE
ARSON NOT ENDANGERING LIFE
CRIMINAL DAMAGE ENDANGERING LIFE ~ VEHICLE
OTHER CRIMINAL DAMAGE ~ DWELLING
OTHER CRIMINAL DAMAGE ~ OTHER
OTHER CRIMINAL DAMAGE ~ OTHER BUILDING
OTHER CRIMINAL DAMAGE ~ VEHICLE
THREATS TO DESTROY OR DAMAGE PROPERTY
(blank)

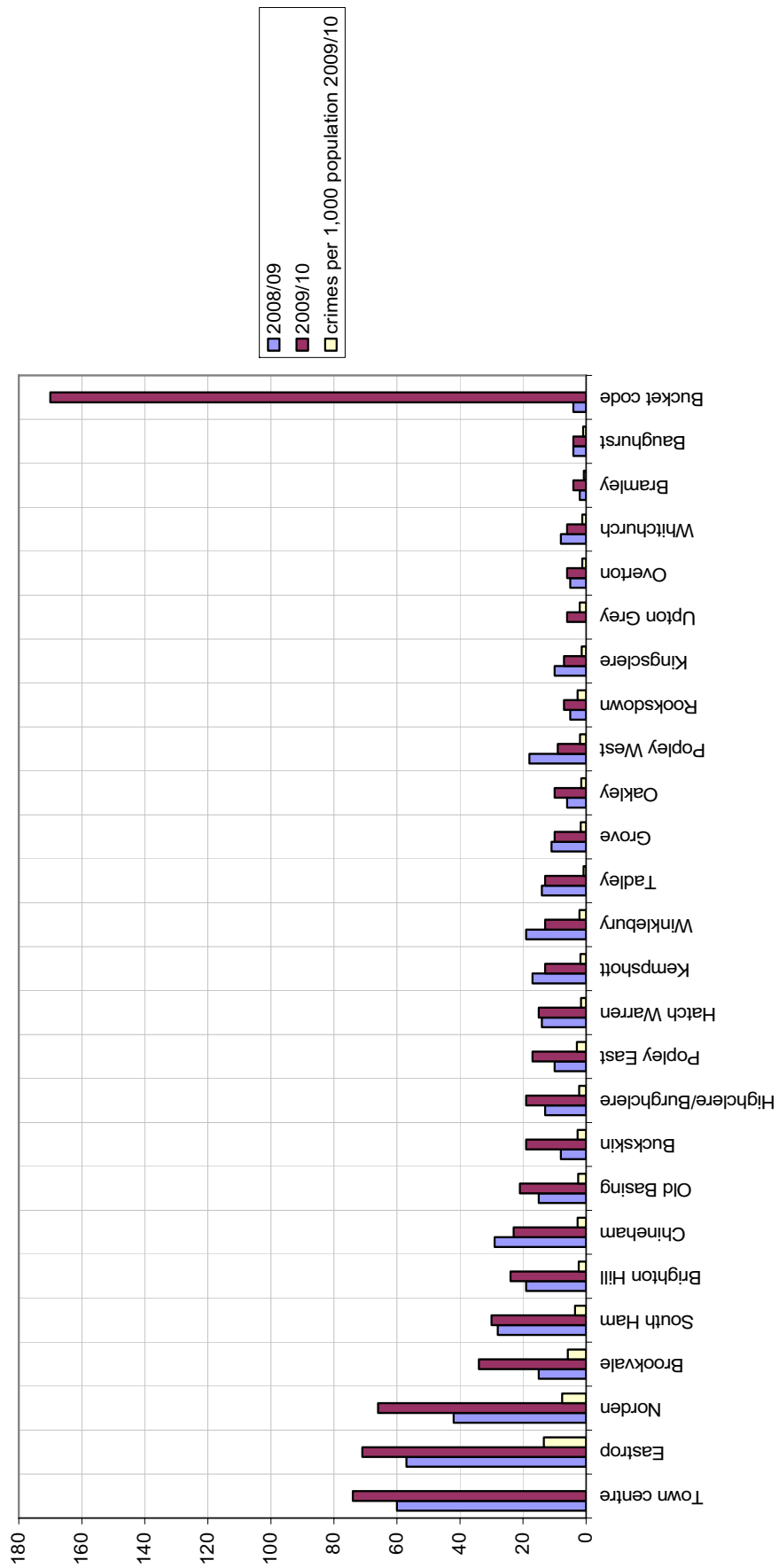
Criminal damage in Basingstoke and Deane
 (Source: Hampshire Constabulary Business Objects 'Strategic Assessment Criminal Damage Report')



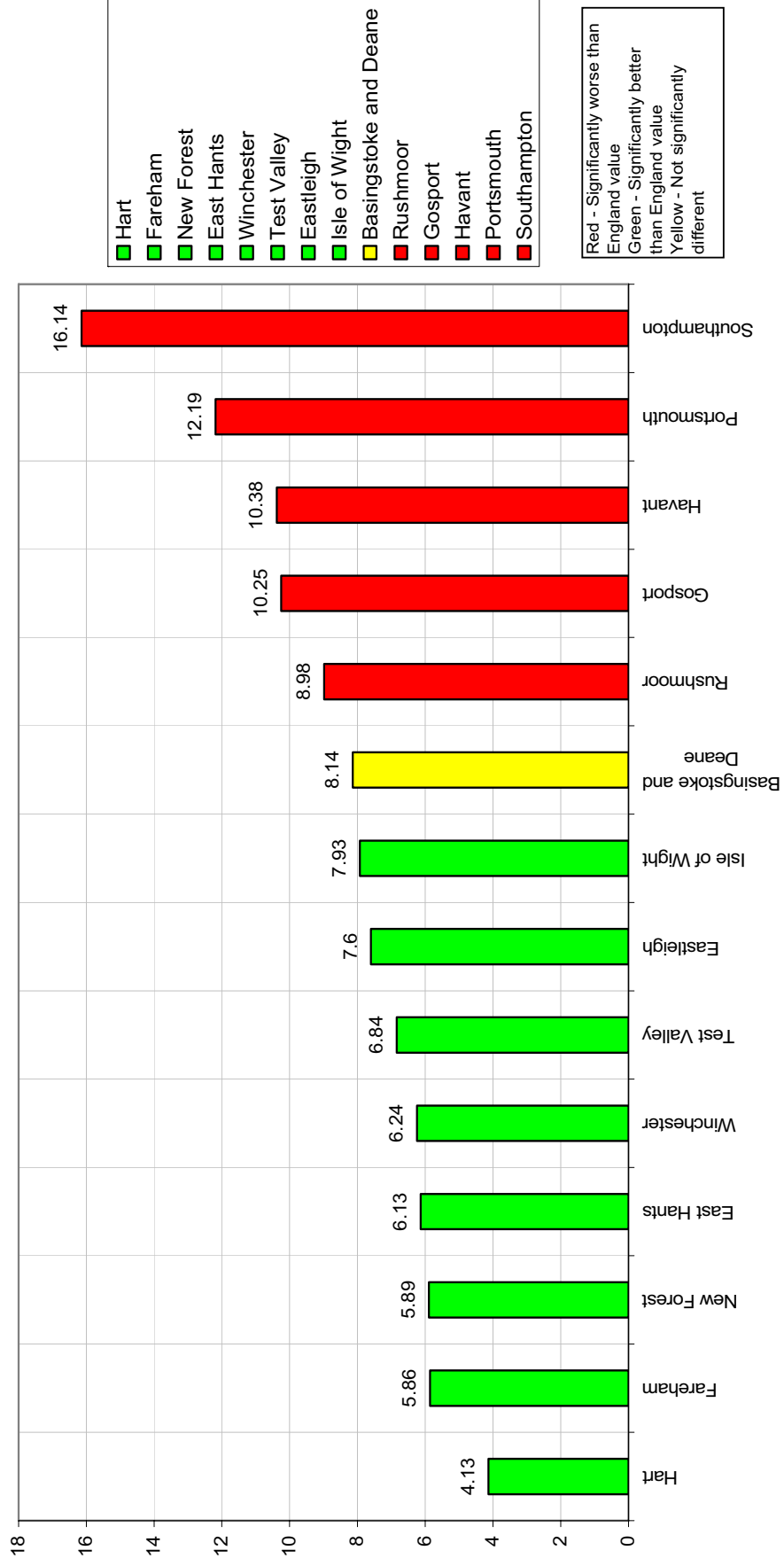
Monthly breakdown of drug offences in Basingstoke and Deane 2009/10
 (Source: Hampshire Constabulary Business Objects)



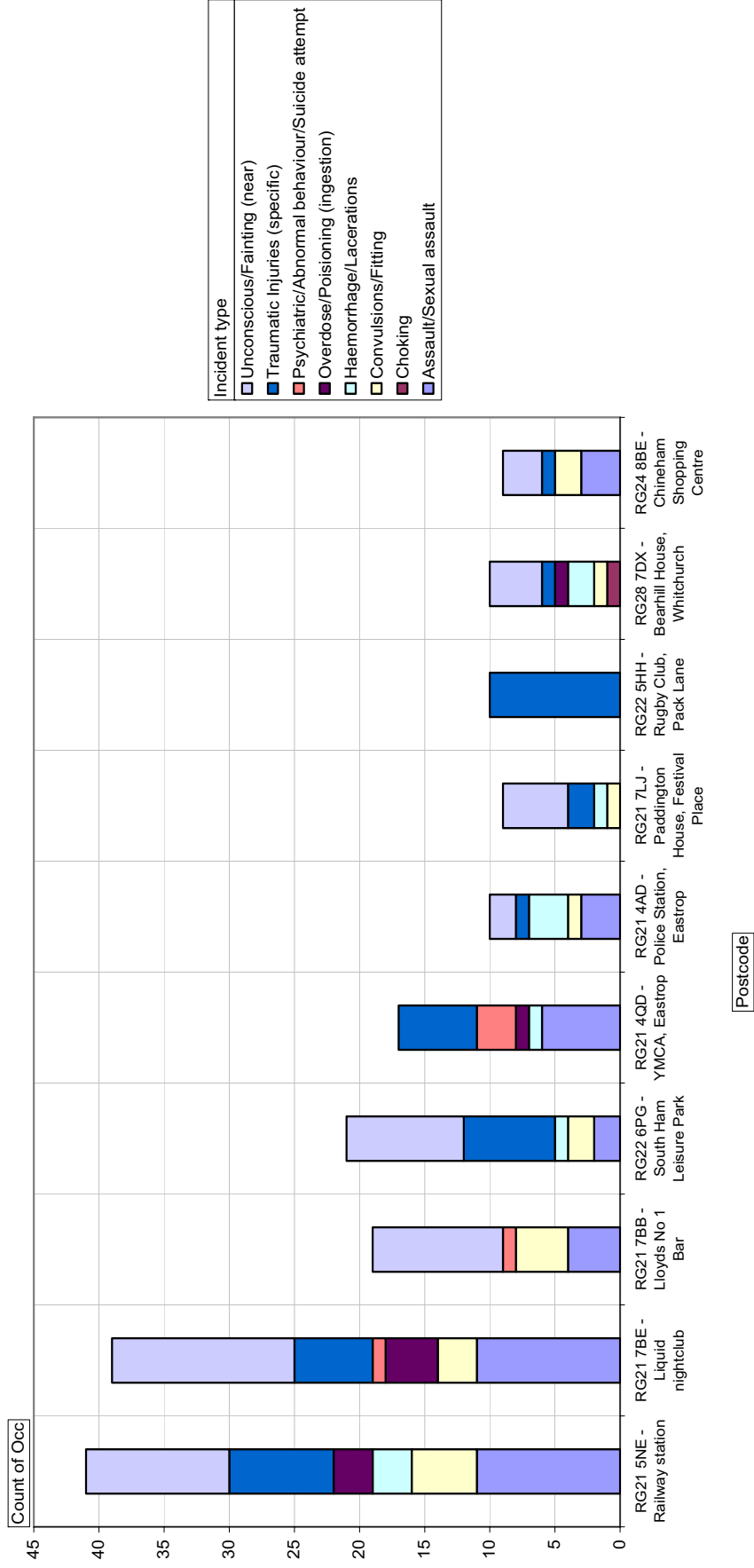
Drug offences in Basingstoke and Deane
 (Source: Hampshire Constabulary Business Objects 'Strategic Assessment Drug Offences')



Number of alcohol related recorded crimes per 1,000 population (December 2009)
 (Source: Local Alcohol Profiles For England (LAPE))



Potential alcohol related incidents in Basingstoke & Deane (Top 10 postcodes) (Apr to Dec 2009)
 (Source: South Central Ambulance Service pick up data)



Breakdown of offences committed by young offenders receiving a substantive outcome 2009/10
 (Source: Wessex Youth Offending Team)

