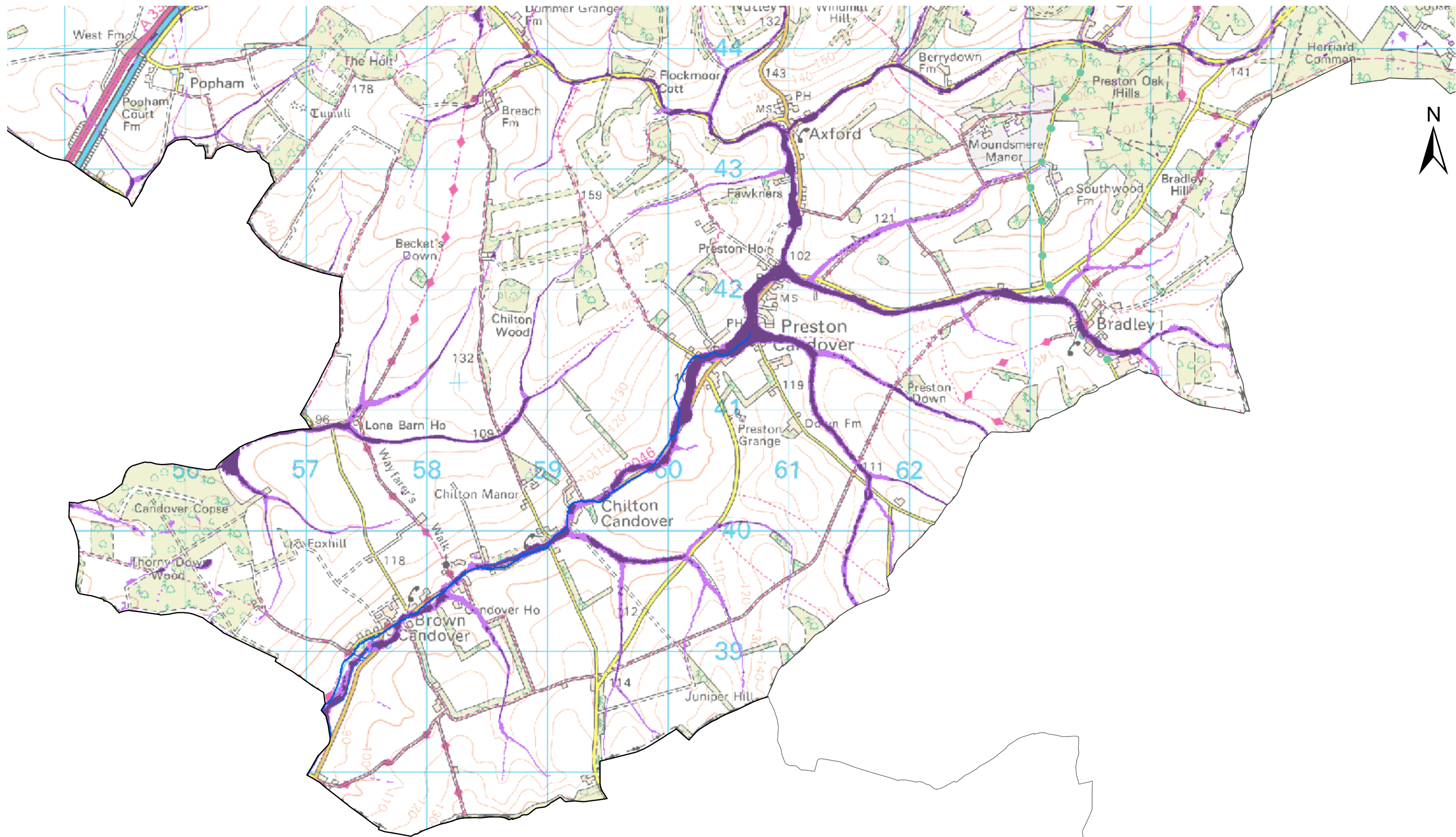


Refer to area location plan for key and notes



This map gives an indication of the broad areas likely to be at risk of surface water flooding. It is not suitable for use at an individual property scale due to the method used

This map is reproduced from Ordnance Survey material with the permission of Ordnance Survey on behalf of the Controller of Her Majesty's Stationery Office © Crown copyright. Unauthorised reproduction infringes Crown copyright and may lead to prosecution or civil proceedings. HCC 100019180 2010

