

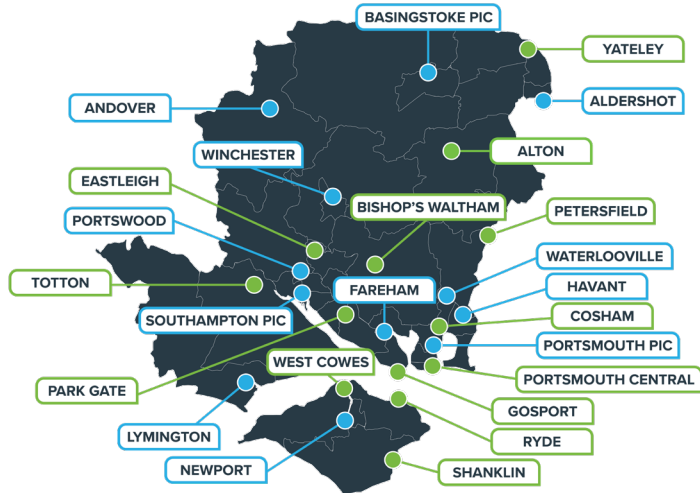
POLICE STATIONS

It's now easier to report crime and talk to your local officers after eight police stations were opened in the last 18 months. The Commissioner has made a commitment to ensure every district in the region has a publicly accessible police station. You can find out which stations have already been opened and which ones are in the pipeline by visiting our website.

Scan for Police Stations



Police Stations
NEW
&
EXISTING



CONTACT DONNA JONES
POLICE AND CRIME COMMISSIONER

   @hantspcc

 01962 871595

 opcc@hampshire.police.uk

Visit www.hampshire-pcc.gov.uk for the latest news from your PCC

DONNA JONES

POLICE & CRIME COMMISSIONER

HAMPSHIRE & ISLE OF WIGHT

2026/27



Inside this leaflet:

851 MORE POLICE OFFICERS

13 MORE POLICE STATIONS

11% LESS CRIME

MORE POLICE
SAFER STREETS

DONNA JONES
POLICE & CRIME COMMISSIONER
HAMPSHIRE & ISLE OF WIGHT

This year, Hampshire and Isle of Wight Constabulary will receive an increase in funding from central government of just 3%. The Constabulary is still one of the lowest funded forces in England and Wales while other forces receive more funding and residents pay more council tax.

By keeping the council tax rise to **under 30p per week** for over 61% of people, an **additional 36 more police officers** will be added to the ranks, bringing the total number of additional police officers funded since 2020 to **851**. That is over and above those retiring or leaving. Without continued investment, we could lose up to 250 officers.

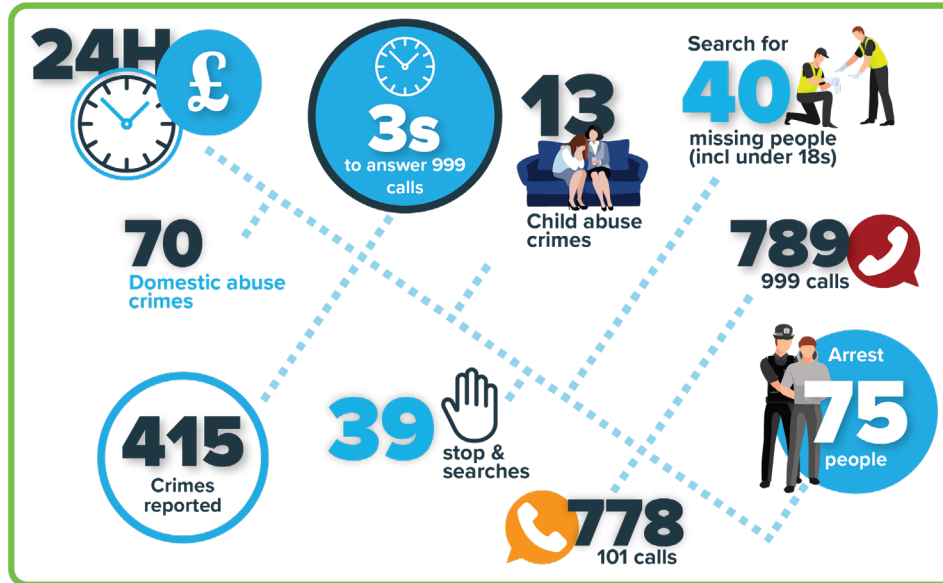
Crime has fallen 11% over the last two years and the Constabulary continues to be one of the **fastest improving forces** in the country. Your investment is vital to ensuring the force can deliver the very best in British policing. I'm maintaining my pledge to recruit more police; we still don't have enough. I won't settle for anything less.



Donna Jones
Police and Crime Commissioner

A DAY IN THE LIFE OF POLICING

Average figures in a 24 hour period for Hampshire & Isle of Wight Constabulary in 2025



CRIME RATES DOWN

(Since 2022)



Vehicle Offences



Knife Crime



Anti-Social Behaviour



Burglaries



All Crime

YOUR COUNCIL TAX 2026/27

The PCC's overall budget of £516.7million is made up of 58% funding from the Home Office grant and 42% from the policing element of your council tax.

Band	A	B	C	D	E	F	G	H
Monthly Increase £	0.83	0.97	1.11	1.25	1.53	1.81	2.08	2.50
Annual Increase £	10.00	11.66	13.34	15.00	18.34	21.66	25.00	30.00

HANTSPCC2026

LOCAL BOBBIES

Did you know you have a named and contactable local police officer? Officers' names, email addresses and phone numbers are published online and can be found via a simple postcode search. The scheme ensures every city, town and village has a named and contactable local police officer. The Commissioner has pledged to recruit more Local Bobbies in the next 12 months.

Scan for
Local
Bobbies

