



*Basingstoke
and Deane*

Living Landscapes

Three Year Action Plan and Appendices

Basingstoke and Deane Borough Council
Natural Environment Strategy

2014



Contents

Three-Year Action Plan	3
Appendix 1: Protected and Notable Species	8
Appendix 2: Locations of Designated Sites	37
Appendix 3: Priority List for Future Green Space Management Plans	41
Appendix 4: Habitat Creation and Restoration Targets	42
Appendix 5: Habitats (Local Key Habitats and Relationship to UK Priority Habitats)	44

Three-Year Action Plan (2014/15 to 2016/17)

Parks and Open Spaces: Managing Biodiversity on Council Land					
Ref	Action	Priority	Timescale	Lead (support in brackets)	Outcomes / Deliverables
1	Provide input into the biodiversity aspects of the green space management plans of sites listed in Table 8 of the Green Infrastructure Strategy and in accordance with timetable given.	High	Years 1, 2 and 3	CS	Management plans will be produced and accessible via council's website as digital documents to download.
2	Identify opportunities for cost effective, low maintenance biodiversity enhancements for other areas of open space and ensure that biodiversity is considered when planning maintenance and open space improvements.	Medium	On going	CS	New habitat features installed such as nest boxes, increase in wildlife-friendly planting, changes to management practices to improve biodiversity are implemented such as those to hedgerows and roadside verges.
3	Develop criteria to aid the identification of new Local Nature Reserves on council owned land.	High	Years 1	CS	Criteria developed which can be used to identify new sites for Local Nature Reserve designation.
4	Develop plan and schedule of council owned sites to be designated Local Nature Reserves and implement.	Medium	Year 1 (on going)	CS	Appropriate Local Nature Reserves designated.
5	Work with the Environment Agency and other organisations to explore the feasibility of restoring sections of the River Loddon running through Eastrop Park.	Medium	Year 1	EA (BDBC, HIWWT)	Feasibility report produced and strategy action plan updated accordingly to progress opportunities.
6	Prepare a Tree Strategy	High	Year 1	CS	Strategy produced with the aim of better long term management of the council's tree stock.

Planning for Green Development

Ref	Action	Priority	Timescale	Lead (support in brackets)	Outcomes / Deliverables
7	Carry out Ecological Impact Assessments of any additional proposed development site allocations and provide biodiversity, tree and landscape advice on Site Development Briefs for allocated sites following adoption of Local Plan.	High	Dependent on Local Plan timescales for site allocations policy formulation.	CS (PP&I)	Reports produced and made publicly available.
8	Continue to provide biodiversity, tree and landscape consultation service for planning applications.	High	On going	CS	Applications determined in accordance with prevailing planning policies and good practice.
9	Provide input into the biodiversity aspects of identifying green corridors within the borough as outlined in the council's Green Infrastructure Strategy (section 7.3).	High	Year 1	CS (all relevant key stakeholders/partners)	Key Green Corridors within the Borough mapped.
10	Prepare an updated Biodiversity and Landscape Supplementary Planning Document (SPD) to help applicants so that they can meet their obligations towards the natural environment.	High	Year 2 and 3	CS	Guidance to applicants placed on council website.
11	Develop and maintain web pages to support Landscape and Biodiversity Supplementary Planning Document, with case studies / examples of good practice and other resources to help planning applicants meet the requirements.	Medium	On going	CS	Webpages published and updated.

Landscape and Biodiversity in the Countryside

Ref	Action	Priority	Timescale	Lead (support in brackets)	Outcomes / Deliverables
12	Continue to work in partnership with other organisations as the most effective means of influencing conservation in the wider countryside.	High	Ongoing	CS (HIWWT, HBIC, NWD)	Information on outcomes published on council / partner websites.
13	Identify opportunities to deliver River Test and River Loddon Biodiversity Priority Areas (BPA) habitat targets as set out in Tables 4 and 5 of the Green Infrastructure Strategy.	High	Years 1, 2 and 3	CS (HIWWT, EA, HCC, NE, WCSRT)	Funded projects to deliver BPA habitat targets.
14	Work with North Wessex Downs AONB team and other partners to deliver biodiversity actions in the AONB management plan within the borough.	High	Ongoing	CS (NWD, HIWWT)	Delivery of AONB management plan biodiversity actions within the Borough.
15	Support the following strategic projects: HIWWT's Living Landscapes work, Winning Ways for Wildlife, Loddon & Eversley Heritage Area, and Pamber Forest.	High	Years 1, 2 and 3	HIWWT (CS plus other relevant stakeholders and partners)	Annual reports of work completed published.
16	Continue to help deliver annual botanical survey programme to help identify new SINCs within the Borough.	High	Years 1, 2 and 3	HBIC (CS)	Site survey reports produced to be used to amend, delete and/or identify new SINCs within the Borough.

Working with the Community

Ref	Action	Priority	Timescale	Lead (support in brackets)	Outcomes / Deliverables
17	Develop and maintain council web pages to inform people about local biodiversity.	High	Ongoing	CS	Webpages published.
18	Undertake recruitment campaign to widen membership of conservation groups.	High	Ongoing	CS	Membership increased.
19	Deliver training programme for conservation volunteers and Tree Wardens.	High	Ongoing	CS	Training delivered.
20	Continue to support the work of Natural Basingstoke.	High	Ongoing	CS	The network of wildlife conservation groups supported and developed with an increase in conservation volunteering across the borough.
21	Investigate opportunities to work more closely with local communities in the management of council green spaces to help protect and increase biodiversity and improve engagement of local communities in site management.	High	Year 1	CS	Long term management of green spaces secured by ensuring the availability of appropriate expertise and operational resources
22	Organise a wildlife related public event.	Low	Year 2 and 3	CS	Annual event delivered
23	Promote 'tool kit' for preparation of parish conservation maps.	Medium	Ongoing	CS and HIWWT	Parish conservation maps produced.
24	Work with Parish Councils to help support green infrastructure initiatives and develop guidance for Parish Councils on meeting their biodiversity duties under the NERC Act.	Medium	Year 2	CS	Guide published and launched.
25	Work with HBIC to support species recording in the borough.	Medium	On going	CS and HBIC	Species recording and surveys undertaken.
26	Explore better links with other organisations that make up the Basingstoke Area Strategic Partnership.	Medium	Years 1, 2 and 3	CS (PECS)	Strategy action plan updated accordingly to progress opportunities.
27	Support local community biodiversity projects through the CHEF grant or Local Infrastructure Fund.	High	Years 1, 2 and 3	CS	Successful applications for biodiversity enhancements implemented.

Monitoring					
Ref	Action	Priority	Timescale	Lead (support in brackets)	Outcomes / Deliverables
28	Produce annual review of progress for the strategy.	High	Years 1, 2 and 3	CS	Report published
29	Review and update the council's Biodiversity and Landscape Strategy and action plan.	High	Following Year 3	CS (all relevant key stakeholders/ partners)	New Living Landscape Strategy and Action Plan produced
30	Contribute information towards council's Performance Indicators that relate to biodiversity.	High	Years 1, 2 and 3	CS	Quarterly and annual reports published.
31	Explore, with partners, possible approaches to landscape-scale monitoring of changes to the natural environment.	High	Years 1, 2 and 3	CS (HBIC, HCC, HIWWT)	Report produced on possible approaches if these are feasible and, if appropriate, monitoring section of strategy action plan updated to include additional monitoring actions.

Key to lead units / organisations (those in brackets indicates a supporting role)

CS	Community Services Unit (BDBC)
PP&I	Planning Policy and Infrastructure Unit (BDBC)
PECS	Policy (Economic and Community Strategy) (BDBC)
PS	Property Services (BDBC)
NWD	North Wessex Downs AONB Partners and Executive Team
HIWWT	Hampshire and Isle of Wight Wildlife Trust
HCC	Hampshire County Council
EA	Environment Agency
HBIC	Hampshire Biodiversity Information Centre
NE	Natural England
WCSRT	Wessex Chalk Streams & Rivers Trust

Appendix 1: Protected and Notable Species

Protected species and notable species are those that have statutory protection or are recognised as needing special conservation effort. See key at end of appendix for status abbreviations. Data provided by the Hampshire Biodiversity Information Centre (Winter 2013).

Taxon name	Common Name	Status
Amphibians and Reptiles		
<i>Anguis fragilis</i>	Slow-worm	NERC_s41 WCA_s5s91(t)
<i>Bufo bufo</i>	Common Toad	NERC_s41
<i>Natrix natrix</i>	Grass Snake	NERC_s41 WCA_s5s91(t)
<i>Triturus cristatus</i>	Great Crested Newt	EU_Hab_2np EU_Hab_4 HBAP NERC_s41 WCA_s5s94b WCA_s5s94c HabReg_s2
<i>Vipera berus</i>	Adder	NERC_s41 WCA_s5s91(t)
<i>Zootoca vivipara</i>	Common Lizard	NERC_s41 WCA_s5s91(t)
Birds		
<i>Accipiter gentilis</i>	Northern Goshawk	WCA_s1s1 CR
<i>Acrocephalus scirpaceus</i>	Reed Warbler	HBAP
<i>Alauda arvensis</i>	Sky Lark	BOCC_Red HBAP NERC_s41

<i>Alcedo atthis</i>	Common Kingfisher	EU_Bird_1 WCA_s1s1
<i>Anas clypeata</i>	Northern Shoveler	CR
<i>Anas querquedula</i>	Garganey	WCA_s1s1
<i>Anas strepera</i>	Gadwall	HBAP
<i>Anser erythropus</i>	Lesser White-fronted Goose	EU_Bird_1
<i>Anthus petrosus</i>	Rock Pipit	CR
<i>Anthus trivialis</i>	Tree Pipit	BOCC_Red NERC_s41
<i>Ardea cinerea</i>	Grey Heron	CS
<i>Ardea purpurea</i>	Purple Heron	EU_Bird_1 WCA_s1s1
<i>Asio flammeus</i>	Short-eared Owl	EU_Bird_1
<i>Asio otus</i>	Long-eared Owl	CR
<i>Aythya ferina</i>	Common Pochard	HBAP CS
<i>Aythya marila</i>	Greater Scaup	BOCC_Red NERC_s41 WCA_s1s1
<i>Botaurus stellaris</i>	Great Bittern	EU_Bird_1 BOCC_Red HBAP NERC_s41 WCA_s1s1

Taxon name	Common Name	Status
<i>Branta leucopsis</i>	Barnacle Goose	EU_Bird_1
<i>Burhinus oedicephalus</i>	Stone-curlew	EU_Bird_1 HBAP NERC_s41 WCA_s1s1 CS
<i>Calcarius lapponicus</i>	Lapland Longspur	WCA_s1s1
<i>Calidris alba</i>	Sanderling	HBAP
<i>Calidris alpina</i>	Dunlin	BOCC_Red HBAP
<i>Calidris canutus</i>	Red Knot	HBAP
<i>Caprimulgus europaeus</i>	European Nightjar	EU_Bird_1 BOCC_Red HBAP NERC_s41 CI
<i>Carduelis cabaret</i>	Lesser Redpoll	BOCC_Red NERC_s41
<i>Carduelis cannabina</i>	Common Linnet	BOCC_Red HBAP
<i>Carduelis flammea</i>	Common Redpoll	CI
<i>Carduelis spinus</i>	Eurasian Siskin	CI
<i>Cettia cetti</i>	Cetti's Warbler	HBAP WCA_s1s1 CS
<i>Charadrius dubius</i>	Little Plover	WCA_s1s1 CS
<i>Charadrius morinellus</i>	Eurasian Dotterel	EU_Bird_1 WCA_s1s1

<i>Chlidonias niger</i>	Black Tern	EU_Bird_1 WCA_s1s1
<i>Chroicocephalus ridibundus</i>	Black-headed Gull	CR
<i>Ciconia ciconia</i>	White Stork	EU_Bird_1
<i>Ciconia nigra</i>	Black Stork	EU_Bird_1
<i>Circus aeruginosus</i>	Eurasian Marsh Harrier	EU_Bird_1 WCA_s1s1 CR
<i>Circus cyaneus</i>	Hen Harrier	EU_Bird_1 BOCC_Red HBAP NERC_s41 WCA_s1s1
<i>Circus pygargus</i>	Montagu's Harrier	EU_Bird_1 HBAP WCA_s1s1 CR
<i>Clangula hyemalis</i>	Long-tailed Duck	WCA_s1s1
<i>Coccothraustes coccothraustes</i>	Hawfinch	BOCC_Red HBAP NERC_s41 CI
<i>Coturnix coturnix</i>	Common Quail	HBAP WCA_s1s1 CR
<i>Cuculus canorus</i>	Common Cuckoo	BOCC_Red NERC_s41
<i>Cygnus cygnus</i>	Whooper Swan	EU_Bird_1 WCA_s1s1
<i>Dendrocopos minor</i>	Lesser Spotted Woodpecker	BOCC_Red HBAP

Taxon name	Common Name	Status
<i>Egretta garzetta</i>	Little Egret	EU_Bird_1 HBAP CR
<i>Emberiza calandra</i>	Corn Bunting	BOCC_Red HBAP CS
<i>Emberiza citrinella</i>	Yellowhammer	BOCC_Red NERC_s41
<i>Emberiza schoeniclus</i>	Reed Bunting	HBAP NERC_s41
<i>Falco columbarius</i>	Merlin	EU_Bird_1 HBAP WCA_s1s1
<i>Falco peregrinus</i>	Peregrine Falcon	EU_Bird_1 WCA_s1s1 CR
<i>Falco subbuteo</i>	Eurasian Hobby	HBAP WCA_s1s1 CI
<i>Ficedula hypoleuca</i>	Pied Flycatcher	CR
<i>Fringilla montifringilla</i>	Brambling	WCA_s1s1
<i>Gallinago gallinago</i>	Common Snipe	HBAP CS
<i>Gavia arctica</i>	Black-throated Diver	EU_Bird_1 WCA_s1s1
<i>Grus grus</i>	Common Crane	EU_Bird_1
<i>Haematopus ostralegus</i>	Eurasian Oystercatcher	CS
<i>Ixobrychus minutus</i>	Little Bittern	EU_Bird_1 WCA_s1s1

<i>Jynx torquilla</i>	Eurasian Wryneck	BOCC_Red WCA_s1s1
<i>Lanius collurio</i>	Red-backed Shrike	EU_Bird_1 BOCC_Red WCA_s1s1
<i>Larus argentatus</i>	Herring Gull	BOCC_Red CR
<i>Larus fuscus</i>	Lesser Black-backed Gull	CR
<i>Larus marinus</i>	Great Black-backed Gull	CR
<i>Limosa lapponica</i>	Bar-tailed Godwit	EU_Bird_1 HBAP
<i>Limosa limosa</i>	Black-tailed Godwit	BOCC_Red HBAP WCA_s1s1 CI
<i>Locustella naevia</i>	Common Grasshopper Warbler	BOCC_Red HBAP NERC_s41 CR
<i>Loxia curvirostra</i>	Common Crossbill	WCA_s1s1 CS
<i>Lullula arborea</i>	Wood Lark	EU_Bird_1 HBAP NERC_s41 WCA_s1s1 CI
<i>Luscinia megarhynchos</i>	Common Nightingale	HBAP CS
<i>Mergellus albellus</i>	Smew	EU_Bird_1
<i>Mergus merganser</i>	Goosander	HBAP CR

Taxon name	Common Name	Status
<i>Milvus migrans</i>	Black Kite	EU_Bird_1
<i>Milvus milvus</i>	Red Kite	EU_Bird_1 HBAP WCA_s1s1 CR
<i>Motacilla flava</i>	Yellow Wagtail	BOCC_Red HBAP CR
<i>Motacilla flava subsp. flava</i>	Blue-Headed Wagtail	BOCC_Red HBAP CR
<i>Motacilla flava subsp. flavissima</i>	Yellow Wagtail	BOCC_Red HBAP NERC_s41 CR
<i>Muscicapa striata</i>	Spotted Flycatcher	BOCC_Red HBAP NERC_s41
<i>Numenius arquata</i>	Eurasian Curlew	NERC_s41
<i>Numenius phaeopus</i>	Whimbrel	BOCC_Red WCA_s1s1
<i>Oenanthe oenanthe</i>	Northern Wheatear	CS
<i>Oriolus oriolus</i>	Eurasian Golden Oriole	BOCC_Red WCA_s1s1
<i>Pandion haliaetus</i>	Osprey	EU_Bird_1 WCA_s1s1
<i>Panurus biarmicus</i>	Bearded Tit	HBAP WCA_s1s1 CR

<i>Passer domesticus</i>	House Sparrow	BOCC_Red NERC_s41
<i>Passer montanus</i>	Eurasian Tree Sparrow	BOCC_Red HBAP NERC_s41 CR
<i>Perdix perdix</i>	Grey Partridge	BOCC_Red HBAP NERC_s41
<i>Pernis apivorus</i>	European Honey-buzzard	EU_Bird_1 HBAP WCA_s1s1 CR
<i>Philomachus pugnax</i>	Ruff	EU_Bird_1 BOCC_Red WCA_s1s1
<i>Phoenicurus ochruros</i>	Black Redstart	WCA_s1s1 CR
<i>Phoenicurus phoenicurus</i>	Common Redstart	CI
<i>Phylloscopus sibilatrix</i>	Wood Warbler	BOCC_Red NERC_s41 CI
<i>Pluvialis apricaria</i>	European Golden Plover	EU_Bird_1 HBAP
<i>Pluvialis squatarola</i>	Grey Plover	HBAP CI
<i>Podiceps cristatus</i>	Great Crested Grebe	CI
<i>Poecile montanus</i>	Willow Tit	BOCC_Red
<i>Poecile palustris</i>	Marsh Tit	BOCC_Red
<i>Pyrrhula pyrrhula</i>	Common Bullfinch	HBAP

Taxon name	Common Name	Status
<i>Rallus aquaticus</i>	Water Rail	CS
<i>Recurvirostra avosetta</i>	Pied Avocet	EU_Bird_1 WCA_s1s1 CR
<i>Regulus ignicapilla</i>	Firecrest	HBAP WCA_s1s1 CS
<i>Riparia riparia</i>	Sand Martin	CS
<i>Saxicola rubetra</i>	Whinchat	HBAP CR
<i>Sterna hirundo</i>	Common Tern	EU_Bird_1 CR
<i>Streptopelia turtur</i>	European Turtle Dove	BOCC_Red HBAP NERC_s41
<i>Sturnus vulgaris</i>	Common Starling	BOCC_Red
<i>Sylvia undata</i>	Dartford Warbler	EU_Bird_1 HBAP WCA_s1s1 CI
<i>Tadorna ferruginea</i>	Ruddy Shelduck	EU_Bird_1
<i>Tadorna tadorna</i>	Common Shelduck	CI
<i>Tringa glareola</i>	Wood Sandpiper	EU_Bird_1 WCA_s1s1
<i>Tringa nebularia</i>	Common Greenshank	WCA_s1s1
<i>Tringa ochropus</i>	Green Sandpiper	WCA_s1s1
<i>Tringa totanus</i>	Common Redshank	HBAP
<i>Turdus iliacus</i>	Redwing	BOCC_Red WCA_s1s1

<i>Turdus philomelos</i>	Song Thrush	BOCC_Red HBAP
<i>Turdus pilaris</i>	Fieldfare	BOCC_Red WCA_s1s1
<i>Turdus torquatus</i>	Ring Ouzel	BOCC_Red NERC_s41
<i>Tyto alba</i>	Barn Owl	WCA_s1s1
<i>Upupa epops</i>	Hoopoe	WCA_s1s1
<i>Vanellus vanellus</i>	Northern Lapwing	BOCC_Red HBAP NERC_s41
Fish		
<i>Cottus gobio</i>	Bullhead	EU_Hab_2np HBAP
<i>Lampetra planeri</i>	Brook Lamprey	EU_Hab_2np HBAP
<i>Salmo trutta</i>	Brown/Sea Trout	NERC_s41
<i>Salmo trutta subsp. fario</i>	Brown Trout	NERC_s41
Higher plants - Conifers		
<i>Juniperus communis</i>	Juniper	HBAP NERC_s41
<i>Juniperus communis subsp. communis</i>	Common Juniper	HBAP NERC_s41
Higher plants - Ferns		
<i>Asplenium trichomanes</i>	Maidenhair Spleenwort	nHR
<i>Asplenium trichomanes subsp. quadrivalens</i>	Spleenwort	nHR

Taxon name	Common Name	Status
<i>Oreopteris limbosperma</i>	Lemon-scented Fern	nHR
<i>Osmunda regalis</i>	Royal Fern	nHR
<i>Thelypteris palustris</i>	Marsh Fern	NS CR
Higher plants - Flowering Plants		
<i>Aconitum napellus</i>	Monk's-hood	CI
<i>Aconitum napellus</i> <i>subsp. napellus</i>	Monk's-Hood	NS CI
<i>Adonis annua</i>	Pheasant's-eye	IUCN_GB_2001:EN NS HBAP NERC_s41 CR
<i>Agrostemma githago</i>	Corncockle	CR
<i>Alchemilla filicaulis</i> <i>subsp. vestita</i>	Lady's-Mantle	CR
<i>Alisma lanceolatum</i>	Narrow-leaved Water-plantain	CS
<i>Althaea hirsuta</i>	Rough Marsh-mallow	HBAP WCA_s8 CR
<i>Althaea officinalis</i>	Marsh-mallow	NS HBAP CS
<i>Anthemis cotula</i>	Stinking Chamomile	IUCN_GB_2001:VU CI
<i>Apera spica-venti</i>	Loose Silky-bent	IUCN_GB_2001:NT CR

<i>Apium inundatum</i>	Lesser Marshwort	nHR
<i>Arabis hirsuta</i>	Hairy Rock-cress	CS
<i>Berberis vulgaris</i>	Barberry	CR
<i>Bromopsis benekenii</i>	Lesser Hairy-brome	NS
<i>Bromus commutatus</i>	Meadow Brome	CS
<i>Bromus racemosus</i>	Smooth Brome	CS
<i>Bromus secalinus</i>	Rye Brome	IUCN_GB_2001:VU NS CR
<i>Butomus umbellatus</i>	Flowering-rush	CS
<i>Buxus sempervirens</i>	Box	IUCN_GB_2001:DD NR
<i>Callitriche brutia</i>	Pedunculate Water-starwort	CS
<i>Camelina sativa</i>	Gold-of-pleasure	NS
<i>Carex acuta</i>	Slender Tufted-sedge	CS
<i>Carex dioica</i>	Dioecious Sedge	CR
<i>Carex flava x viridula</i> = <i>C. x alsatica</i>	Sedge	IUCN_GB_2001:VU NR CR
<i>Carex hostiana</i>	Tawny Sedge	nHS
<i>Carex pulicaris</i>	Flea Sedge	nHS
<i>Carex rostrata</i>	Bottle Sedge	nHS
<i>Carex vesicaria</i>	Bladder-sedge	CS
<i>Carex viridula subsp. brachyrrhyncha</i>	Long-stalked Yellow-sedge	CR

Taxon name	Common Name	Status
<i>Centaurea cyanus</i>	Cornflower	HBAP NERC_s41 CR
<i>Centaureum pulchellum</i>	Lesser Centaury	nHS
<i>Cephalanthera damasonium</i>	White Helleborine	IUCN_GB_2001:VU NERC_s41
<i>Cephalanthera longifolia</i>	Narrow-leaved Helleborine	IUCN_GB_2001:VU NS HBAP NERC_s41 CS
<i>Cerastium diffusum</i>	Sea Mouse-ear	nHR
<i>Cerastium pumilum</i>	Dwarf Mouse-ear	IUCN_GB_2001:NT NS HBAP CR
<i>Chamaemelum nobile</i>	Chamomile	IUCN_GB_2001:VU HBAP NERC_s41 nHR
<i>Chenopodium bonus-henricus</i>	Good-King-Henry	IUCN_GB_2001:VU CR
<i>Cirsium dissectum x palustre = C. x forsteri</i>	Thistle	CS
<i>Cirsium eriophorum</i>	Woolly Thistle	CS
<i>Clinopodium acinos</i>	Basil Thyme	IUCN_GB_2001:VU NERC_s41 CS
<i>Colchicum autumnale</i>	Meadow Saffron	IUCN_GB_2001:NT CR

<i>Convallaria majalis</i>	Lily-of-the-valley	nHR
<i>Crataegus laevigata</i>	Midland Hawthorn	CS
<i>Crepis biennis</i>	Rough Hawk's-beard	CR
<i>Cuscuta epithymum</i>	Dodder	IUCN_GB_2001:VU nHS
<i>Cynoglossum officinale</i>	Hound's-tongue	IUCN_GB_2001:NT
<i>Cyperus longus</i>	Galingale	IUCN_GB_2001:NT NS CS
<i>Dactylorhiza incarnata subsp. incarnata</i>	Early Marsh-Orchid	CS
<i>Dactylorhiza traunsteinerioides</i>	Narrow-leaved Marsh-orchid	NS HBAP CR
<i>Dactylorhiza viridis</i>	Frog Orchid	IUCN_GB_2001:VU NERC_s41 CI
<i>Daphne mezereum</i>	Mezereon	IUCN_GB_2001:VU NS CR
<i>Dianthus deltoides</i>	Maiden Pink	IUCN_GB_2001:NT NS CR
<i>Dipsacus pilosus</i>	Small Teasel	CR
<i>Eleocharis multicaulis</i>	Many-stalked Spike-rush	nHS
<i>Epipactis palustris</i>	Marsh Helleborine	CS
<i>Epipactis phyllanthes</i>	Green-flowered Helleborine	NS HBAP CS

Taxon name	Common Name	Status
<i>Epipactis purpurata</i>	Violet Helleborine	CS
<i>Epipactis purpurata</i> <i>x helleborine = E. x schulzei</i>	Helleborine	CS
<i>Euphorbia exigua</i>	Dwarf Spurge	IUCN_GB_2001:NT
<i>Euphorbia platyphyllos</i>	Broad-leaved Spurge	HBAP CS
<i>Euphrasia anglica</i>	Small-flowered Sticky Eyebright	IUCN_GB_2001:EN NERC_s41 nHR
<i>Euphrasia pseudokernerii</i>	Eyebright	IUCN_GB_2001:EN NS HBAP NERC_s41 CR
<i>Filago vulgaris</i>	Common Cudweed	IUCN_GB_2001:NT nHS
<i>Fritillaria meleagris</i>	Fritillary	NS CR
<i>Fumaria muralis</i> <i>subsp. boraei</i>	Few-Flowered Fumitory	nHS
<i>Fumaria parviflora</i>	Fine-leaved Fumitory	IUCN_GB_2001:VU NS CR
<i>Fumaria vaillantii</i>	Few-flowered Fumitory	IUCN_GB_2001:VU NS CR
<i>Gagea lutea</i>	Yellow Star-of-Bethlehem	CR

<i>Galeopsis angustifolia</i>	Red Hemp-nettle	IUCN_GB_2001:CR NS HBAP NERC_s41 CS
<i>Galium parisiense</i>	Wall Bedstraw	IUCN_GB_2001:VU NS HBAP CR
<i>Galium pumilum</i>	Slender Bedstraw	IUCN_GB_2001:DD IUCN_GB_2001:EN NR HBAP NERC_s41 CR
<i>Galium verum x mollugo = G. x pomeranicum</i>	Hybrid Yellow Bedstraw	CR
<i>Genista anglica</i>	Petty Whin	IUCN_GB_2001:NT nHS
<i>Gentiana pneumonanthe</i>	Marsh Gentian	NS HBAP CS
<i>Gentianella campestris</i>	Field Gentian	IUCN_GB_2001:VU NERC_s41 CS
<i>Gentianella germanica</i>	Chiltern Gentian	IUCN_GB_2001:VU NS HBAP CR
<i>Gentianella germanica x amarella = G. x pamplinii</i>	Gentian	IUCN_GB_2001:VU NS HBAP CR

Taxon name	Common Name	Status
<i>Geranium rotundifolium</i>	Round-leaved Crane's-bill	CS
<i>Glebionis segetum</i>	Corn Marigold	IUCN_GB_2001:VU nHR
<i>Gnaphalium sylvaticum</i>	Heath Cudweed	IUCN_GB_2001:EN HBAP CS
<i>Groenlandia densa</i>	Opposite-leaved Pondweed	IUCN_GB_2001:VU CR
<i>Gymnadenia conopsea subsp. borealis</i>	Fragrant Orchid	CR
<i>Gymnadenia conopsea subsp. densiflora</i>	Fragrant Orchid	IUCN_GB_2001:DD CR
<i>Helleborus foetidus</i>	Stinking Hellebore	NS HBAP CS
<i>Helleborus viridis</i>	Green Hellebore	CR
<i>Hieracium grandidens</i>	Hawkweed	CR
<i>Hippophae rhamnoides</i>	Sea-buckthorn	NS CI
<i>Hottonia palustris</i>	Water-violet	CR
<i>Hyoscyamus niger</i>	Henbane	UCN_GB_2001:VU CR
<i>Hypericum montanum</i>	Pale St John's-wort	IUCN_GB_2001:NT CR

<i>Ilex aquifolium x perado = I. x altaclerensis</i>	Highclere Holly	CI
<i>Impatiens noli-tangere</i>	Touch-me-not Balsam	NS CI
<i>Inula helenium</i>	Elecampane	CI
<i>Juncus acutus</i>	Sharp Rush	NS CR
<i>Juncus subnodulosus</i>	Blunt-flowered Rush	CS
<i>Lactuca virosa</i>	Great Lettuce	CS
<i>Lamium hybridum</i>	Cut-leaved Dead-nettle	CS
<i>Lathraea squamaria</i>	Toothwort	CS
<i>Lathyrus sylvestris</i>	Narrow-leaved Everlasting-pea	CR
<i>Legousia speculum-veneris</i>	Large Venus's-looking-glass	CI
<i>Lepidium ruderale</i>	Narrow-leaved Pepperwort	nHS
<i>Leucojum aestivum</i>	Summer Snowflake	HBAP
<i>Leucojum aestivum subsp. pulchellum</i>	Summer Snowflake	HBAP
<i>Linaria repens</i>	Pale Toadflax	CS
<i>Linum bienne</i>	Pale Flax	nHS
<i>Lithospermum arvense</i>	Field Gromwell	IUCN_GB_2001:EN HBAP CI
<i>Lithospermum purpureocaeruleum</i>	Purple Gromwell	NR CI

Taxon name	Common Name	Status
<i>Lotus tenuis</i>	Narrow-leaved Bird's-foot-trefoil	nHR
<i>Luzula sylvatica</i>	Great Wood-rush	CS
<i>Meconopsis cambrica</i>	Welsh Poppy	NS
<i>Medicago polymorpha</i>	Toothed Medick	NS CR
<i>Minuartia hybrida</i>	Fine-leaved Sandwort	IUCN_GB_2001:EN NS HBAP NERC_s41 CR
<i>Minuartia hybrida subsp. tenuifolia</i>	<i>Minuartia hybrida</i> subsp. <i>tenuifolia</i>	IUCN_GB_2001:EN NS HBAP NERC_s41 CR
<i>Minuartia verna</i>	Spring Sandwort	IUCN_GB_2001:NT NS
<i>Misopates orontium</i>	Weasel's-snout	IUCN_GB_2001:VU
<i>Moenchia erecta</i>	Upright Chickweed	nHS
<i>Monotropa hypopitys</i>	Yellow Bird's-nest	IUCN_GB_2001:EN NERC_s41 CS
<i>Monotropa hypopitys subsp. hypopitys</i>	Bird's-nest	IUCN_GB_2001:EN NS NERC_s41 CS
<i>Myosurus minimus</i>	Mousetail	IUCN_GB_2001:VU nHR

<i>Neottia nidus-avis</i>	Bird's-nest Orchid	IUCN_GB_2001:NT
<i>Nepeta cataria</i>	Cat-mint	IUCN_GB_2001:VU CR
<i>Nymphoides peltata</i>	Fringed Water-lily	NS nHS
<i>Oenanthe fistulosa</i>	Tubular Water-dropwort	IUCN_GB_2001:VU NERC_s41 nHS
<i>Onobrychis viciifolia</i>	Sainfoin	IUCN_GB_2001:NT
<i>Ophrys insectifera</i>	Fly Orchid	IUCN_GB_2001:VU NERC_s41 CS
<i>Orchis morio</i>	Green-winged Orchid	IUCN_GB_2001:NT HBAP nHS
<i>Orchis ustulata</i>	Burnt Orchid	IUCN_GB_2001:EN NS NERC_s41 CR
<i>Orobanche hederæ</i>	Ivy Broomrape	CR
<i>Orobanche purpurea</i>	Yarrow Broomrape	IUCN_GB_2001:VU NR HBAP CR
<i>Orobanche rapum-genistæ</i>	Greater Broomrape	IUCN_GB_2001:NT NS HBAP CR
<i>Papaver argemone</i>	Prickly Poppy	IUCN_GB_2001:VU
<i>Parentucellia viscosa</i>	Yellow Bartsia	CS
<i>Paris quadrifolia</i>	Herb-paris	CS

Taxon name	Common Name	Status
<i>Pedicularis palustris</i>	Marsh Lousewort	nHS
<i>Persicaria bistorta</i>	Common Bistort	CS
<i>Persicaria minor</i>	Small Water-pepper	IUCN_GB_2001:VU nHR
<i>Petroselinum segetum</i>	Corn Parsley	CS
<i>Phyteuma orbiculare</i>	Round-headed Rampion	NS CS
<i>Platanthera bifolia</i>	Lesser Butterfly-orchid	IUCN_GB_2001:VU NERC_s41 CS
<i>Platanthera chlorantha</i>	Greater Butterfly-orchid	IUCN_GB_2001:NT NERC_s41 CS
<i>Poa compressa</i>	Flattened Meadow-grass	CS
<i>Poa infirma</i>	Early Meadow-grass	NS nHS
<i>Polypogon monspeliensis</i>	Annual Beard-grass	NS HBAP nHR
<i>Populus nigra subsp. betulifolia</i>	Black Poplar	CR
<i>Potamogeton obtusifolius</i>	Blunt-leaved Pondweed	CS
<i>Potentilla anglica</i>	Trailing Tormentil	nHR
<i>Potentilla anglica x reptans = P. x mixta</i>	Hybrid Cinquefoil	nHR
<i>Potentilla palustris</i>	Marsh Cinquefoil	CS

<i>Potentilla tabernaemontani</i>	Spring Cinquefoil	NS CR
<i>Puccinellia distans</i>	Reflexed Saltmarsh-Grass	nHR
<i>Pyrola minor</i>	Common Wintergreen	CR
<i>Ranunculus penicillatus subsp. pseudofluitans</i>	Stream Water-Crowfoot	HBAP
<i>Ranunculus trichophyllus</i>	Thread-leaved Water-crowfoot	CR
<i>Rorippa amphibia</i>	Great Yellow-cress	CS
<i>Rosa obtusifolia</i>	Round-leaved Dog-rose	nHR
<i>Rosa rubiginosa</i>	Sweet-briar	CS
<i>Rosa spinosissima</i>	Burnet Rose	nHR
<i>Salix aurita</i>	Eared Willow	nHR
<i>Salvia verbenaca</i>	Wild Clary	CR
<i>Sambucus ebulus</i>	Dwarf Elder	CR
<i>Sanguisorba officinalis</i>	Great Burnet	CS
<i>Saxifraga tridactylites</i>	Rue-leaved Saxifrage	CS
<i>Scandix pecten-veneris</i>	Shepherd's-needle	IUCN_GB_2001:CR HBAP NERC_s41 CR
<i>Scleranthus annuus</i>	Annual Knawel	IUCN_GB_2001:EN NERC_s41
<i>Securigera varia</i>	Crown Vetch	CI

Taxon name	Common Name	Status
<i>Silene noctiflora</i>	Night-flowering Catchfly	IUCN_GB_2001:VU CS
<i>Smyrniololus atrum</i>	Alexanders	nHR
<i>Sorbus torminalis</i>	Wild Service-tree	nHS
<i>Spergula arvensis</i>	Corn Spurrey	IUCN_GB_2001:VU
<i>Spiranthes spiralis</i>	Autumn Lady's-tresses	IUCN_GB_2001:NT nHS
<i>Stachys arvensis</i>	Field Woundwort	IUCN_GB_2001:NT
<i>Stellaria neglecta</i>	Greater Chickweed	CS
<i>Stellaria pallida</i>	Lesser Chickweed	nHR
<i>Stellaria palustris</i>	Marsh Stitchwort	IUCN_GB_2001:VU NERC_s41 CR
<i>Tephrosia integrifolia</i>	Field Fleawort	IUCN_GB_2001:EN NS
<i>Tephrosia integrifolia</i> subsp. <i>integrifolia</i>	Field Fleawort	IUCN_GB_2001:EN NS NERC_s41 CR
<i>Teucrium botrys</i>	Cut-leaved Germander	HBAP WCA_s8 CR
<i>Thalictrum flavum</i>	Common Meadow-rue	nHS
<i>Tilia cordata</i>	Small-leaved Lime	nHR
<i>Tilia platyphyllos</i>	Large-leaved Lime	NS CR

<i>Torilis arvensis</i>	Spreading Hedge-parsley	IUCN_GB_2001:EN NS HBAP NERC_s41 CR
<i>Trifolium glomeratum</i>	Clustered Clover	NS CS
<i>Trifolium striatum</i>	Knotted Clover	nHS
<i>Tulipa sylvestris</i>	Wild Tulip	CI
<i>Ulmus minor</i> subsp. <i>angustifolia</i>	Cornish Elm	HBAP CS
<i>Umbilicus rupestris</i>	Navelwort	nHR
<i>Valerianella carinata</i>	Keeled-fruited Cornsalad	nHS
<i>Valerianella dentata</i>	Narrow-fruited Cornsalad	IUCN_GB_2001:EN CS
<i>Valerianella ramosa</i>	Broad-fruited Cornsalad	IUCN_GB_2001:EN NS HBAP NERC_s41 CR
<i>Verbascum thapsus</i> x <i>nigrum</i> = <i>V. x semialbum</i>	Mullein	CR
<i>Veronica agrestis</i>	Green Field-speedwell	nHS
<i>Veronica anagallis-aquatica</i>	Blue Water-Speedwell	CI
<i>Vicia sylvatica</i>	Wood Vetch	CR
<i>Viola tricolor</i>	Wild Pansy	IUCN_GB_2001:NT CS

Taxon name	Common Name	Status
<i>Vulpia unilateralis</i>	Mat-grass Fescue	NS HBAP
Higher plants - Horsetails		
<i>Equisetum fluviatile x arvense = E. x litorale</i>	Shore Horsetail	CR
<i>Equisetum sylvaticum</i>	Wood Horsetail	CS
Invertebrates - Coleoptera		
<i>Agrilus (Anambus) angustulus</i>	Agrilus (Anambus) angustulus	NS
<i>Agrilus (Anambus) biguttatus</i>	Two-Spot Wood-Borer	NS
<i>Ampedus elongantulus</i>	Ampedus elongantulus	NS
<i>Cicones variegatus</i>	Cicones variegatus	NS
<i>Colydium elongatum</i>	Colydium elongatum	IUCN_GB_pre94:R
<i>Grammoptera ustulata</i>	Grammoptera ustulata	IUCN_GB_pre94:R
<i>Hippodamia (Adonia) variegata</i>	Adonis' Ladybird	NS
<i>Lucanus cervus</i>	Stag Beetle	EU_Hab_2np NS HBAP NERC_s41
<i>Orsodacne humeralis</i>	Orsodacne humeralis	NS
<i>Platystomos albinus</i>	Platystomos albinus	NS
<i>Prionychus ater</i>	Prionychus ater	NS
<i>Pyrochroa coccinea</i>	Black-headed Cardinal Beetle	NS

<i>Trachyphloeus spinimanus</i>	Trachyphloeus spinimanus	NS
Invertebrates - Diptera		
<i>Beris fuscipes</i>	Short-horned Black Legionnaire	NN
<i>Chrysotoxum elegans</i>	Zipperback	IUCN_GB_pre94:R
<i>Criorhina ranunculi</i>	Criorhina ranunculi	NN
<i>Ferdinandea ruficornis</i>	Ferdinandea ruficornis	NN
<i>Metasyrphus latilunulatus</i>	Metasyrphus latilunulatus	NN
<i>Microdon analis</i>	Microdon analis	NN
<i>Odontomyia argentata</i>	Silver Colonel	IUCN_GB_pre94:VU HBAP
<i>Orthonevra geniculata</i>	Orthonevra geniculata	NN
<i>Pherbellia dorsata</i>	Pherbellia dorsata	NN
<i>Psacadina verbekei</i>	Psacadina verbekei	NN
<i>Rhingia rostrata</i>	Rhingia rostrata	IUCN_GB_pre94:VU
<i>Stratiomys potamida</i>	Banded General	NN
<i>Subclytia rotundiventris</i>	Subclytia rotundiventris	IUCN_GB_pre94:R
<i>Tetanocera punctifrons</i>	Tetanocera punctifrons	NN
<i>Tipula selene</i>	Tipula selene	IUCN_GB_pre94:R
<i>Volucella inanis</i>	Volucella inanis	NN
<i>Volucella zonaria</i>	Volucella zonaria	NN
<i>Xylota abiens</i>	Xylota abiens	NN

Taxon name	Common Name	Status
Invertebrates - Hemiptera		
<i>Aphanus rolandri</i>	Aphanus rolandri	NS
Invertebrates - Hymenoptera		
<i>Andrena (Chrysandrena) fulvago</i>	Andrena (Chrysandrena) fulvago	NS
<i>Andrena (Micrandrena) alfkenella</i>	Andrena (Micrandrena) alfkenella	IUCN_GB_pre94:R
<i>Bombus (Psithyrus) rupestris</i>	Hill Cuckoo Bee	NS HBAP
<i>Chrysis gracillima</i>	Chrysis gracillima	IUCN_GB_pre94:VU
<i>Dolichovespula (Dolichovespula) media</i>	Dolichovespula (Dolichovespula) media	NS
<i>Dolichovespula (Pseudovespula) saxonica</i>	Dolichovespula (Pseudovespula) saxonica	IUCN_GB_pre94:IK
<i>Formica rufa</i>	Red Wood Ant	HBAP
<i>Hylaeus (Abrupta) cornutus</i>	Hylaeus (Abrupta) cornutus	NS
<i>Lasioglossum (Dialictus) leucopus</i>	Lasioglossum (Dialictus) leucopus	IUCN_GB_pre94:R
<i>Lasioglossum (Evylaeus) malachurum</i>	Lasioglossum (Evylaeus) malachurum	NS
<i>Lasius brunneus</i>	Brown Ant	NS
<i>Nomada fucata</i>	Nomada fucata	NS

<i>Sphecodes niger</i>	Sphecodes niger	IUCN_GB_pre94:R
<i>Sphecodes scabricollis</i>	Sphecodes scabricollis	IUCN_GB_pre94:R
<i>Tiphia minuta</i>	Small Tiphia	NS
Invertebrates - Lepidoptera		
<i>Abraxas sylvata</i>	Clouded Magpie	CR
<i>Abrostola triplasia</i>	Dark Spectacle	CS
<i>Achlya flavicornis</i>	Yellow Horned	nHS
<i>Acleris literana</i>	Lichen Button	CR
<i>Acompsia cinerella</i>	Ash-coloured Sober	CR
<i>Acronicta alni</i>	Alder Moth	nHS
<i>Acronicta psi</i>	Grey Dagger	NERC_s41
<i>Acronicta rumicis</i>	Knot Grass	NERC_s41
<i>Adela croesella</i>	Small Barred Long-horn	CR
<i>Adela cuprella</i>	Early Long-horn	CR
<i>Aethalura punctulata</i>	Grey Birch	nHS
<i>Aethes beatricella</i>	Hemlock Yellow Conch	CR
<i>Agonopterix angelicella</i>	Angelica Flat-body	CR
<i>Agonopterix ciliella</i>	Large Carrot Flat-body	CR
<i>Agonopterix propinquella</i>	Black-spot Flat-body	CR
<i>Agonopterix subpropinquella</i>	Ruddy Flat-body	CR
<i>Agriopis aurantiaria</i>	Scarce Umber	CS

Taxon name	Common Name	Status
<i>Agriopis leucophaearia</i>	Spring Usher	nHS
<i>Agrochola helvola</i>	Flounced Chestnut	NERC_s41 nHR
<i>Agrochola litura</i>	Brown-spot Pinion	NERC_s41
<i>Agrochola lychnidis</i>	Beaded Chestnut	NERC_s41
<i>Agrotis cinerea</i>	Light Feathered Rustic	HBAP
<i>Aleucis distinctata</i>	Sloe Carpet	NERC_s41
<i>Allophyes oxyacanthae</i>	Green-brindled Crescent	NERC_s41 nHS
<i>Altenia scriptella</i>	Horse-shoe Groundling	NS
<i>Amphipoea oculea</i>	Ear Moth	NERC_s41
<i>Amphipyra tragopoginis</i>	Mouse Moth	NERC_s41
<i>Anania verbascalis</i>	Golden Pearl	NS
<i>Anarta myrtilli</i>	Beautiful Yellow Underwing	nHS
<i>Ancylis diminutana</i>	Small Festooned Roller	CR
<i>Ancylis obtusana</i>	Small Buckthorn Roller	CR
<i>Ancylis uncella</i>	Bridge Roller	CR
<i>Ancylis unguicella</i>	Broken-barred Roller	CR
<i>Ancylosis oblitella</i>	Saltmarsh Knot-horn	NN
<i>Angerona prunaria</i>	Orange Moth	CS

<i>Apamea anceps</i>	Large Nutmeg	NERC_s41 CS
<i>Apamea remissa</i>	Dusky Brocade	NERC_s41
<i>Apamea sublustris</i>	Reddish Light Arches	CS
<i>Apamea unanimitis</i>	Small Clouded Brindle	CS
<i>Apatura iris</i>	Purple Emperor	IUCN_GB_2001:NT HBAP CS
<i>Aphelia paleana</i>	Timothy Tortrix	CR
<i>Aplocera plagiata</i>	Treble-bar	nHS
<i>Apocheima hispidaria</i>	Small Brindled Beauty	nHS
<i>Apoda limacodes</i>	Festoon	HBAP
<i>Aporophyla lutulenta</i>	Deep-brown Dart	NERC_s41 nHS
<i>Apotomis sauciana</i>	Bilberry Marble	CR
<i>Archanara dissoluta</i>	Brown-veined Wainscot	nHR
<i>Archanara geminipuncta</i>	Twin-spotted Wainscot	CS
<i>Archiearis parthenias</i>	Orange Underwing	nHS
<i>Archips crataegana</i>	Brown Oak Tortrix	CR
<i>Archips rosana</i>	Rose Tortrix	CR
<i>Arctia caja</i>	Garden Tiger	NERC_s41 nHS
<i>Arenostola phragmitidis</i>	Fen Wainscot	nHR
<i>Argynnis aglaja</i>	Dark Green Fritillary	CS

Taxon name	Common Name	Status
<i>Argynnis paphia</i>	Silver-washed Fritillary	HBAP CI
<i>Argyresthia curvella</i>	Brindled Argent	CR
<i>Argyresthia dilectella</i>	Juniper Argent	CR
<i>Argyresthia ivella</i>	Gold-four Argent	CR
<i>Argyresthia laevigatella</i>	Larch-boring Argent	CR
<i>Argyresthia semitestacella</i>	Large Beech Argent	CR
<i>Argyrotaenia ljugiana</i>	Heather Twist	CR
<i>Aristotelia ericinella</i>	Heather Neb	CR
<i>Aspitates ochrearia</i>	Yellow Belle	CS
<i>Asteroscopus sphinx</i>	Sprawler	NERC_s41 CS
<i>Atethmia centrigo</i>	Centre-barred Sallow	NERC_s41
<i>Atolmis rubricollis</i>	Red-necked Footman	CS
<i>Bactra furfurana</i>	Mottled Marble	CR
<i>Bena bicolorana</i>	Scarce Silver-lines	nHS
<i>Biselachista utonella</i>	Bog Dwarf	CR
<i>Blepharita adusta</i>	Dark Brocade	NERC_s41 CR
<i>Boloria euphrosyne</i>	Pearl-bordered Fritillary	IUCN_GB_2001:EN HBAP NERC_s41 CS

<i>Boloria selene</i>	Small Pearl-bordered Fritillary	IUCN_GB_2001:NT HBAP NERC_s41 CR
<i>Brachmia inornatella</i>	Fen Crest	NS
<i>Brachylomia viminalis</i>	Minor Shoulder-knot	NERC_s41
<i>Bucculatrix albedinella</i>	Elm Bent-wing	CR
<i>Bupalus piniaria</i>	Bordered White	nHS
<i>Calamotropha paludella</i>	Bulrush Veneer	NS
<i>Caloptilia populetorum</i>	Clouded Slender	CR
<i>Caradrina morpheus</i>	Mottled Rustic	NERC_s41
<i>Carpatolechia alburnella</i>	Suffused Groundling	CR
<i>Carpatolechia decorella</i>	Winter Oak Groundling	CR
<i>Carpatolechia fugitivella</i>	Elm Groundling	CR
<i>Carpatolechia proximella</i>	Black-speckled Groundling	CR
<i>Caryocolum fraternella</i>	Mouse-ear Groundling	CR
<i>Caryocolum tricolorella</i>	Three-colour Groundling	CR
<i>Cataclysta lemnata</i>	Small China-mark	CR
<i>Catarhoe cuculata</i>	Royal Mantle	CS

Taxon name	Common Name	Status
<i>Catocala sponsa</i>	Dark Crimson Underwing	IUCN_GB_pre94:R HBAP NERC_s41
<i>Catoptria permutatella</i>	Scotch Grass-veneer	NS
<i>Cedestis gysselella</i>	Gold Pine Ermel	CR
<i>Cedestis subfasciella</i>	Brown Pine Ermel	CR
<i>Celaena leucostigma</i>	Crescent	NERC_s41 CS
<i>Celypha cespitana</i>	Thyme Marble	CR
<i>Celypha rivulana</i>	Silver-striped Marble	CR
<i>Celypha rosaceana</i>	Roseate Marble	CR
<i>Cerapteryx graminis</i>	Antler Moth	CS
<i>Chesias legatella</i>	Streak	NERC_s41 CS
<i>Chiasmia clathrata</i>	Latticed Heath	NERC_s41 CS
<i>Chloroclysta citrata</i>	Dark Marbled Carpet	CS
<i>Chortodes pygmina</i>	Small Wainscot	nHS
<i>Chrysoesthia drurella</i>	Flame Neb	CR
<i>Clavigesta purdeyi</i>	Pine Leaf-mining Moth	CR
<i>Clostera pigra</i>	Small Chocolate-tip	CS
<i>Cnephasia pasiuana</i>	Meadow Shade	CR
<i>Cochylidia rupicola</i>	Hemp-agrimony Conch	CR

<i>Cochylis hybridella</i>	White-bodied Conch	CR
<i>Cochylis molliculana</i>	Ox-tongue Conch	CS
<i>Coenobia rufa</i>	Small Rufous	nHS
<i>Coenonympha pamphilus</i>	Small Heath	IUCN_GB_2001:NT NERC_s41
<i>Coleophora coracipennella</i>	Blackthorn Case-bearer	CR
<i>Coleophora juncicolella</i>	Least Case-bearer	CR
<i>Coleophora laricella</i>	Larch Case-bearer	CR
<i>Coleophora otidipennella</i>	Wood-rush Case-bearer	CR
<i>Coleophora pyrrhulipennella</i>	Ling Case-bearer	CR
<i>Coleophora saxicolella</i>	Orache Case-bearer	CR
<i>Coleophora solitariella</i>	Ochreous Case-bearer	CR
<i>Coleophora sternipennella</i>	Speckled Case-bearer	CR
<i>Coleophora versurella</i>	Pale Orache Case-bearer	CR
<i>Coleophora violacea</i>	Violet Case-bearer	CR
<i>Colostygia multistrigaria</i>	Mottled Grey	CR
<i>Conistra ligula</i>	Dark Chestnut	nHS
<i>Cosmia affinis</i>	Lesser-spotted Pinion	CS
<i>Cosmia diffinis</i>	White-spotted Pinion	HBAP NERC_s41

Taxon name	Common Name	Status
<i>Cosmia pyralina</i>	Lunar-spotted Pinion	nHS
<i>Cosmiotes consortella</i>	Field Dwarf	CR
<i>Crambus hamella</i>	Dark Grass-veneer	NS
<i>Crassa tinctella</i>	Tinted Tubic	CR
<i>Cucullia chamomillae</i>	Chamomile Shark	CS
<i>Cucullia umbratica</i>	Shark	nHS
<i>Cupido minimus</i>	Small Blue	IUCN_GB_2001:NT HBAP NERC_s41 CS
<i>Cydia conicolana</i>	Pine-cone Piercer	CR
<i>Cydia cosmophorana</i>	Scarce Pine Piercer	CR
<i>Cymatophorima diluta</i>	Oak Lutestring	NERC_s41 nHS
<i>Deileptenia ribeata</i>	Satin Beauty	CS
<i>Deltote uncula</i>	Silver Hook	CR
<i>Depressaria badiella</i>	False Brown Flat-body	CR
<i>Depressaria chaerophylli</i>	Streaked Flat-body	CR
<i>Depressaria ultimella</i>	Fen Flat-body	CR
<i>Diacrisia sannio</i>	Clouded Buff	CS
<i>Diarsia rubi</i>	Small Square-spot	NERC_s41
<i>Dicallomera fascelina</i>	Dark Tussock	CS
<i>Dichomeris alacella</i>	Lichen Sober	NN

<i>Dichonia aprilina</i>	Merveille Du Jour	nHS
<i>Dichrorampha aeratana</i>	Obscure Drill	CR
<i>Dicycla oo</i>	Heart Moth	HBAP NERC_s41
<i>Digitivalva pulicariae</i>	Fleabane Smudge	CR
<i>Diloba caeruleocephala</i>	Figure of Eight	NERC_s41 CS
<i>Diurnea lipsiella</i>	November Tubic	CR
<i>Donacaula mucronellus</i>	Scarce Water-veneer	CR
<i>Dypterygia scabriuscula</i>	Bird's Wing	nHS
<i>Eana osseana</i>	Dotted Shade	CR
<i>Ecliptopera silaceata</i>	Small Phoenix	NERC_s41
<i>Ectoedemia argyropeza</i>	Virgin Pigmy	CR
<i>Ectoedemia decentella</i>	Sycamore-seed Pigmy	CR
<i>Ectoedemia louisella</i>	Maple-seed Pigmy	CR
<i>Ectropis crepuscularia</i>	Small Engrailed	CR
<i>Eilema sororcula</i>	Orange Footman	HBAP
<i>Elachista atricomella</i>	Black-headed Dwarf	CR
<i>Elachista luticomella</i>	Yellow-headed Dwarf	CR
<i>Elachista poae</i>	Sweet-grass Dwarf	CR
<i>Elachista triatomea</i>	Meadow Dwarf	CR
<i>Elaphria venustula</i>	Rosy Marbled	CS

Taxon name	Common Name	Status
<i>Elegia similella</i>	White-barred Knot-horn	NS HBAP
<i>Endothenia ericetana</i>	Heath Marble	CR
<i>Endothenia nigricostana</i>	Black-edged Marble	CR
<i>Endothenia quadrimaculana</i>	Blotched Marble	CR
<i>Ennomos erosaria</i>	September Thorn	NERC_s41
<i>Ennomos fuscantaria</i>	Dusky Thorn	NERC_s41 nHS
<i>Ennomos quercinaria</i>	August Thorn	NERC_s41 nHS
<i>Epermenia aequidentellus</i>	Carrot Lance-wing	CR
<i>Epermenia falciformis</i>	Large Lance-wing	CR
<i>Epehstia cautella</i>	Dried Currant Moth	CR
<i>Epehstia elutella</i>	Cacao Moth	CR
<i>Epehstia parasitella</i>	False Cacao Moth	CR
<i>Epiblema cirsiiana</i>	Knapweed Bell	CR
<i>Epinotia maculana</i>	Dark Aspen Bell	CR
<i>Epinotia rubiginosana</i>	Pine Bell	CR
<i>Epinotia tedella</i>	Common Spruce Bell	CR
<i>Epinotia tetraquetrana</i>	Square-barred Bell	CR
<i>Epinotia trigonella</i>	White-blotch Bell	CR

<i>Epione repandaria</i>	Bordered Beauty	nHS
<i>Epirrhoe galiata</i>	Galium Carpet	NERC_s41 CS
<i>Epirrhoe rivata</i>	Wood Carpet	CS
<i>Erynnis tages</i>	Dingy Skipper	IUCN_GB_2001:VU NERC_s41 CI
<i>Ethmia dodecea</i>	Dotted Ermel	NS
<i>Eucosma obumbratana</i>	Two-coloured Bell	CR
<i>Eudonia delunella</i>	Pied Grey	NS
<i>Eugnorisma glareosa</i>	Autumnal Rustic	NERC_s41 CS
<i>Eulithis mellinata</i>	Spinach	NERC_s41 nHR
<i>Eulithis testata</i>	Chevron	nHS
<i>Euphydryas aurinia</i>	Marsh Fritillary	EU_Hab_2np IUCN_GB_2001:VU HBAP NERC_s41 WCA_s5s91(k) WCA_s5s91(t) WCA_s5s94a WCA_s5s94b WCA_s5s94c CR
<i>Euphyia unangulata</i>	Sharp-angled Carpet	CS
<i>Eupithecia abietaria</i>	Cloaked Pug	IUCN_GB_pre94:R CR
<i>Eupithecia assimilata</i>	Currant Pug	nHS
<i>Eupithecia indigata</i>	Ochreous Pug	CS

Taxon name	Common Name	Status
<i>Eupithecia lariciata</i>	Larch Pug	nHS
<i>Eupithecia phoeniceata</i>	Cypress Pug	nHR
<i>Eupithecia pusillata</i>	Juniper Pug	CS
<i>Eupithecia satyrata</i>	Satyr Pug	CS
<i>Eupithecia simpliciatata</i>	Plain Pug	CS
<i>Eupithecia subumbrata</i>	Shaded Pug	CS
<i>Eupithecia tantillaria</i>	Dwarf Pug	nHS
<i>Eupithecia tenuiata</i>	Slender Pug	nHS
<i>Eupithecia trisignaria</i>	Triple-spotted Pug	CR
<i>Eupithecia venosata</i>	Netted Pug	CS
<i>Euxoa nigricans</i>	Garden Dart	NERC_s41 CS
<i>Euxoa tritici</i>	White-line Dart	NERC_s41 CS
<i>Furcula bifida</i>	Poplar Kitten	CS
<i>Gastropacha quercifolia</i>	Lappet	CS
<i>Gelechia rhombella</i>	Apple Groundling	CR
<i>Gelechia sororculella</i>	Dark-striped Groundling	CR
<i>Graphiphora augur</i>	Double Dart	NERC_s41 CS
<i>Gypsonoma aceriana</i>	Rosy Cloaked Shoot	CR

<i>Gypsonoma oppressana</i>	Poplar Shoot	CR
<i>Hadena compta</i>	Varied Coronet	nHS
<i>Hadena confusa</i>	Marbled Coronet	CS
<i>Hadena perplexa</i>	Tawny Shears	CS
<i>Hadena rivularis</i>	Campion	nHS
<i>Hamearis lucina</i>	Duke of Burgundy	IUCN_GB_2001:EN HBAP NERC_s41 CS
<i>Heliozela hammoniella</i>	Birch Lift	CR
<i>Hemaris fuciformis</i>	Broad-bordered Bee Hawk-moth	HBAP
<i>Hemaris tityus</i>	Narrow-bordered Bee Hawk-moth	HBAP NERC_s41
<i>Hemistola chrysoprasaria</i>	Small Emerald	NERC_s41
<i>Hepialus humuli</i>	Ghost Moth	NERC_s41
<i>Hipparchia semele</i>	Grayling	IUCN_GB_2001:VU NERC_s41
<i>Homoeosoma nebulella</i>	Large Clouded Knot-horn	NS
<i>Hoplodrina blanda</i>	Rustic	NERC_s41
<i>Hydraecia micacea</i>	Rosy Rustic	NERC_s41
<i>Hydraecia petasitis</i>	Butterbur	CR
<i>Hypena crassalis</i>	Beautiful Snout	CS
<i>Hypena rostralis</i>	Buttoned Snout	HBAP

Taxon name	Common Name	Status
<i>Hysterophora maculosana</i>	Bluebell Conch	CR
<i>Idaea emarginata</i>	Small Scallop	CS
<i>Idaea straminata</i>	Plain Wave	nHS
<i>Idaea subsericeata</i>	Satin Wave	nHS
<i>Incurvaria praelatella</i>	Strawberry Bright	CR
<i>Ipimorpha retusa</i>	Double Kidney	nHS
<i>Ipimorpha subtusa</i>	Olive	nHS
<i>Isophrictis striatella</i>	White-border Neb	CR
<i>Jodia croceago</i>	Orange Upperwing	IUCN_GB_pre94:R HBAP NERC_s41
<i>Jodis lactearia</i>	Little Emerald	nHS
<i>Lacanobia contigua</i>	Beautiful Brocade	CS
<i>Lampronia corticella</i>	Raspberry Moth	CR
<i>Lampropteryx suffumata</i>	Water Carpet	CS
<i>Larentia clavaria</i>	Mallow	CS
<i>Lasiommata megera</i>	Wall	IUCN_GB_2001:NT NERC_s41 CS
<i>Leucoma salicis</i>	White Satin Moth	CS
<i>Limenitis camilla</i>	White Admiral	IUCN_GB_2001:VU NERC_s41
<i>Lithophane hepatica</i>	Pale Pinion	nHS

<i>Lithophane semibrunnea</i>	Tawny Pinion	CS
<i>Lithosia quadra</i>	Four-spotted Footman	CR
<i>Lobophora halterata</i>	Seraphim	nHS
<i>Lycia hirtaria</i>	Brindled Beauty	NERC_s41
<i>Macaria wauaria</i>	V-moth	NERC_s41 CR
<i>Malacosoma neustria</i>	Lackey	NERC_s41 nHS
<i>Meganola strigula</i>	Small Black Arches	HBAP
<i>Melanchra persicariae</i>	Dot Moth	NERC_s41
<i>Melanchra pisi</i>	Broom Moth	NERC_s41 CS
<i>Melanthia procellata</i>	Pretty Chalk Carpet	NERC_s41
<i>Melitaea cinxia</i>	Glanville Fritillary	IUCN_GB_2001:EN NERC_s41
<i>Merrifieldia baliodactylus</i>	Dingy White Plume	HBAP NERC_s41
<i>Merrifieldia leucodactyla</i>	Thyme Plume	CR
<i>Mesoleuca albicillata</i>	Beautiful Carpet	CS
<i>Mesoligia literosa</i>	Rosy Minor	NERC_s41
<i>Metzneria aprilella</i>	Brilliant Neb	CR
<i>Minoa murinata</i>	Drab Looper	HBAP NERC_s41

Taxon name	Common Name	Status
<i>Mompha conturbatella</i>	Large Dark Cosmet	CR
<i>Mompha ochraceella</i>	Buff Cosmet	CR
<i>Monochroa palustrella</i>	Wainscot Neb	NS
<i>Monopis crocicapitella</i>	Pale-backed Clothes	CR
<i>Monopis obviella</i>	Yellow-backed Clothes	CR
<i>Mythimna albipuncta</i>	White-point	nHS
<i>Mythimna comma</i>	Shoulder-striped Wainscot	NERC_s41
<i>Mythimna obsoleta</i>	Obscure Wainscot	CS
<i>Mythimna pudorina</i>	Striped Wainscot	CS
<i>Mythimna straminea</i>	Southern Wainscot	nHS
<i>Naenia typica</i>	Gothic	nHS
<i>Nemophora metallica</i>	Brassy Long-horn	CR
<i>Nephopterix angustella</i>	Spindle Knot-horn	NS
<i>Niditinea fuscella</i>	Brown-dotted Clothes Moth	CR
<i>Noctua orbona</i>	Lunar Yellow Underwing	HBAP NERC_s41
<i>Nonagria typhae</i>	Bulrush Wainscot	nHS
<i>Nudaria mundana</i>	Muslin Footman	CR

<i>Nymphalis polychloros</i>	Large Tortoiseshell	IUCN_GB_2001:RE
<i>Ochsenheimeria taurella</i>	Feathered Stem-moth	CR
<i>Ocnerostoma friesei</i>	Grey Pine Ermel	CR
<i>Odezia atrata</i>	Chimney Sweep	CR
<i>Operophtera fagata</i>	Northern Winter Moth	CS
<i>Oria musculosa</i>	Brighton Wainscot	HBAP NERC_s41
<i>Ortholepis betulae</i>	Birch Knot-horn	CR
<i>Orthosia gracilis</i>	Powdered Quaker	NERC_s41
<i>Orthosia miniosa</i>	Blossom Underwing	CS
<i>Orthosia opima</i>	Northern Drab	CR
<i>Orthosia populeti</i>	Lead-coloured Drab	CS
<i>Orthotelia sparganella</i>	Reed Smudge	CR
<i>Ovendenia lienigianus</i>	Wormwood Plume	CR
<i>Pammene gallicana</i>	Purple-shaded Piercer	CR
<i>Pammene giganteana</i>	Early Oak Piercer	CR
<i>Pammene spiniana</i>	Triangle-marked Piercer	CR
<i>Panemeria tenebrata</i>	Small Yellow Underwing	CS
<i>Panolis flammea</i>	Pine Beauty	nHS

Taxon name	Common Name	Status
<i>Papilio machaon</i>	Swallowtail	IUCN_GB_2001:NT WCA_s5s91(k) WCA_s5s91(t) WCA_s5s94a WCA_s5s94b WCA_s5s94c
<i>Parachronistis albiceps</i>	Wood Groundling	CR
<i>Paradarisa consonaria</i>	Square Spot	nHS
<i>Parasemia plantaginis</i>	Wood Tiger	CS
<i>Parastichtis suspecta</i>	Suspected	nHS
<i>Parastichtis ypsilon</i>	Dingy Shears	nHS
<i>Paratalanta hyalinalis</i>	Translucent Pearl	NS
<i>Parectopa ononidis</i>	Clover Slender	CR
<i>Pasiphila chloerata</i>	Sloe Pug	CR
<i>Pechipogo strigilata</i>	Common Fan-foot	HBAP NERC_s41
<i>Pediasia contaminella</i>	Waste Grass-veneer	NS
<i>Pelurga comitata</i>	Dark Spinach	NERC_s41 CS
<i>Pempelia genistella</i>	Gorse Knot-horn	NS HBAP
<i>Perittia obscurepunctella</i>	Honeysuckle Dwarf	CR
<i>Perizoma affinitata</i>	Rivulet	CS

<i>Perizoma albulata</i>	Grass Rivulet	CS
<i>Perizoma bifaciata</i>	Barred Rivulet	CS
<i>Perizoma didymata</i>	Twin-spot Carpet	CS
<i>Pexicopia malvella</i>	Hollyhock Seed Moth	NS
<i>Philereme vetulata</i>	Brown Scallop	nHS
<i>Phragmataecia castaneae</i>	Reed Leopard	IUCN_GB_pre94:VU
<i>Phycitodes saxicola</i>	Small Clouded Knot-horn	CR
<i>Phyllocnistis saligna</i>	Willow Bent-wing	CR
<i>Phyllonorycter cavella</i>	Gold Birch Midget	CR
<i>Phyllonorycter emberizaepenella</i>	Large Midget	CR
<i>Phyllonorycter hilarella</i>	Sallow Midget	CR
<i>Phyllonorycter mespilella</i>	Scarce Brown Midget	CR
<i>Phyllonorycter quinqueguttella</i>	Sandhill Midget	CR
<i>Phyllonorycter salictella</i>	Willow Midget	CR
<i>Phyllonorycter tenerella</i>	Hornbeam Midget	CR
<i>Phyllonorycter ulicicolella</i>	Gorse Midget	CR
<i>Phytometra viridaria</i>	Small Purple-barred	nHS
<i>Plagodis pulveraria</i>	Barred Umber	CS
<i>Platyedra subcinerea</i>	Mallow Groundling	NN

Taxon name	Common Name	Status
<i>Platytes cerussella</i>	Little Grass-veneer	CR
<i>Plebejus argus</i>	Silver-studded Blue	IUCN_GB_2001:VU HBAP NERC_s41 CI
<i>Plemyria rubiginata</i>	Blue-bordered Carpet	nHS
<i>Pleurota bicostella</i>	Light Streak	CR
<i>Plodia interpunctella</i>	Indian Meal Moth	CR
<i>Plusia festucae</i>	Gold Spot	CS
<i>Plutella porrectella</i>	Grey-streaked Smudge	CR
<i>Polia bombycina</i>	Pale Shining Brown	HBAP NERC_s41
<i>Polychrysia moneta</i>	Golden Plusia	nHS
<i>Polymixis flavicincta</i>	Large Ranunculus	CS
<i>Polymixis lichenea</i>	Feathered Ranunculus	CS
<i>Polyommatus (Lysandra) coridon</i>	Chalk Hill Blue	IUCN_GB_2001:NT HBAP CS
<i>Pseudatemelia flavifrontella</i>	Yellow-headed Tubic	CR
<i>Pseudococcyx turionella</i>	Pine Bud Moth	CR
<i>Pseudopostega crepusculella</i>	Mint Bent-wing	CR

<i>Pseudosciaphila branderiana</i>	Great Marble	CR
<i>Pseudotelphusa paripunctella</i>	Tawny Groundling	CR
<i>Pseudotelphusa scalella</i>	Black-spotted Groundling	CR
<i>Pseudoterpna pruinata</i>	Grass Emerald	nHS
<i>Psoricoptera gibbosella</i>	Humped Crest	CR
<i>Psychoides verhuella</i>	Hart's-tongue Smut	CR
<i>Pterophorus galactodactyla</i>	Spotted White Plume	CR
<i>Ptilodon cucullina</i>	Maple Prominent	CS
<i>Pyrgus malvae</i>	Grizzled Skipper	IUCN_GB_2001:VU NERC_s41 CI
<i>Pyrrhia umbra</i>	Bordered Sallow	nHR
<i>Recurvaria leucatella</i>	White-barred Groundling	CR
<i>Recurvaria nanella</i>	Brindled Groundling	NS
<i>Rheumaptera hastata</i>	Argent & Sable	HBAP NERC_s41
<i>Rheumaptera undulata</i>	Scallop Shell	nHS
<i>Rhizedra lutosa</i>	Large Wainscot	NERC_s41 nHS
<i>Rhyacia simulans</i>	Dotted Rustic	CR
<i>Saturnia pavonia</i>	Emperor Moth	CS

Taxon name	Common Name	Status
<i>Satyrium w-album</i>	White-letter Hairstreak	IUCN_GB_2001:EN HBAP NERC_s41 CS
<i>Schrankia costaestrigalis</i>	Pinion-streaked Snout	nHS
<i>Scopula immutata</i>	Lesser Cream Wave	nHS
<i>Scopula marginepunctata</i>	Mullein Wave	NERC_s41 nHR
<i>Scotopteryx bipunctaria</i>	Chalk Carpet	HBAP NERC_s41
<i>Scotopteryx chenopodiata</i>	Shaded Broad-bar	NERC_s41
<i>Scotopteryx luridata</i>	July Belle	nHR
<i>Scythris grandipennis</i>	Black Owlet	CR
<i>Selenia lunularia</i>	Lunar Thorn	CR
<i>Semioscopis avellanella</i>	Early Flat-body	CR
<i>Semioscopis steinkellneriana</i>	Dawn Flat-body	CR
<i>Shargacucullia lychnitis</i>	Striped Lychnis	HBAP NERC_s41
<i>Sitochroa palealis</i>	Sulphur Pearl	NN
<i>Sophronia semicostella</i>	White-shouldered Sober	CR
<i>Spilonota laricana</i>	Larch-bud Moth	CR
<i>Spilosoma lubricipeda</i>	White Ermine	NERC_s41

<i>Spilosoma luteum</i>	Buff Ermine	NERC_s41
<i>Spuleria flavicaput</i>	Yellow-headed Cosmet	CR
<i>Stathmopoda pedella</i>	Alder Signal	NS
<i>Stenolechia gemmella</i>	Black-dotted Groundling	CR
<i>Stigmella assimilella</i>	Aspen Pigmy	CR
<i>Stigmella incognitella</i>	Grey Apple Pigmy	CR
<i>Stigmella myrtillella</i>	Bilberry Pigmy	CR
<i>Stigmella sorbi</i>	Barred Rowan Pigmy	CR
<i>Synaphe punctalis</i>	Long-legged Tabby	NS
<i>Telechrysis tripuncta</i>	Treble-spot Tubic	CR
<i>Tethea or</i>	Poplar Lutestring	CS
<i>Thera firmata</i>	Pine Carpet	nHS
<i>Thera juniperata</i>	Juniper Carpet	CR
<i>Theria primaria</i>	Early Moth	nHS
<i>Tholera cespitis</i>	Hedge Rustic	NERC_s41 CS
<i>Tholera decimalis</i>	Feathered Gothic	NERC_s41 nHS
<i>Thumatha senex</i>	Round-winged Muslin	nHS
<i>Timandra comae</i>	Blood-Vein	NERC_s41
<i>Tinea pellionella</i>	Case-bearing Clothes Moth	CR
<i>Tineola bisselliella</i>	Common Clothes Moth	CR

Taxon name	Common Name	Status
<i>Triaxomera fulvimitrella</i>	Four-spotted Clothes	CR
<i>Trichiura crataegi</i>	Pale Eggar	NERC_s41
<i>Triphosa dubitata</i>	Tissue	CR
<i>Tyria jacobaeae</i>	Cinnabar	NERC_s41
<i>Watsonalla binaria</i>	Oak Hook-tip	NERC_s41
<i>Xanthia citrigo</i>	Orange Sallow	CS
<i>Xanthia gilvago</i>	Dusky-lemon Sallow	NERC_s41 CR
<i>Xanthia icteritia</i>	Sallow	NERC_s41
<i>Xanthorhoe biriviata</i>	Balsam Carpet	IUCN_GB_pre94:R HBAP
<i>Xanthorhoe ferrugata</i>	Dark-barred Twin-spot Carpet	NERC_s41
<i>Xanthorhoe quadrifasiata</i>	Large Twin-spot Carpet	CS
<i>Xestia agathina</i>	Heath Rustic	NERC_s41 CS
<i>Xestia baja</i>	Dotted Clay	CS
<i>Xestia castanea</i>	Neglected Rustic	NERC_s41 CS
<i>Xestia ditrapezium</i>	Triple-spotted Clay	CR
<i>Yponomeuta malinellus</i>	Apple Ermine	CR
<i>Ypsolopha horridella</i>	Dark Smudge	CR
<i>Ypsolopha sylvella</i>	Wood Smudge	CR

<i>Ypsolopha vittella</i>	Elm Smudge	CR
<i>Zeiraphera ratzeburgiana</i>	Spruce Bud Moth	CR
<i>Zelleria hepariella</i>	Brown Ash Ermel	CR
<i>Zygaena trifolii</i>	Five-spot Burnet	CS
Invertebrates - Mollusca		
<i>Ashfordia granulata</i>	a snail	HBAP
<i>Pisidium tenuilineatum</i>	Fine-lined Pea Mussel	UKBAP IUCN_GB_pre94:R HBAP NERC_s41
<i>Vertigo (Vertigo) moulinsiana</i>	Desmoulin's Whorl Snail	EU_Hab_2np IUCN_GB_pre94:R HBAP NERC_s41
Invertebrates - Odonata		
<i>Ceriagrion tenellum</i>	Small Red Damselfly	HBAP
<i>Orthetrum coerulescens</i>	Keeled Skimmer	HBAP
<i>Platycnemis pennipes</i>	White-legged Damselfly	HBAP
Lower plants - Liverworts, Hornworts and Mosses		
<i>Bryum archangelicum</i>	Archangelic Thread-moss	NR
<i>Ctenidium molluscum</i>	Chalk Comb-moss	HBAP
<i>Ditrichum flexicaule</i>	Bendy Ditrichum	NS

Taxon name	Common Name	Status
Mammals - Terrestrial (bats)		
<i>Barbastella barbastellus</i>	Western Barbastelle	EU_Hab_4 EU_Hab_4 HBAP NERC_s41 WCA_s5s94b WCA_s5s94c HabReg_s2 CI
<i>Eptesicus serotinus</i>	Serotine	EU_Hab_4 HBAP WCA_s5s94b WCA_s5s94c HabReg_s2
<i>Myotis daubentonii</i>	Daubenton's Bat	EU_Hab_4 WCA_s5s94b WCA_s5s94c HabReg_s2
<i>Myotis mystacinus</i>	Whiskered Bat	EU_Hab_4 WCA_s5s94b WCA_s5s94c HabReg_s2
<i>Myotis mystacinus/brandtii</i>	Whiskered/Brandt's Bat	WCA_s5s94b WCA_s5s94c HabReg_s2
<i>Myotis nattereri</i>	Natterer's Bat	EU_Hab_4 WCA_s5s94b WCA_s5s94c HabReg_s2
<i>Nyctalus leisleri</i>	Lesser Noctule	EU_Hab_4 WCA_s5s94b WCA_s5s94c HabReg_s2

<i>Nyctalus noctula</i>	Noctule Bat	EU_Hab_4 NERC_s41 WCA_s5s94b WCA_s5s94c HabReg_s2
<i>Pipistrellus nathusii</i>	Nathusius's Pipistrelle	EU_Hab_4 WCA_s5s94b WCA_s5s94c HabReg_s2
<i>Pipistrellus pipistrellus</i>	Common Pipistrelle	EU_Hab_4 HBAP WCA_s5s94b WCA_s5s94c HabReg_s2
<i>Pipistrellus pygmaeus</i>	Soprano Pipistrelle	EU_Hab_4 HBAP NERC_s41 WCA_s5s94b WCA_s5s94c HabReg_s2
<i>Plecotus auritus</i>	Brown Long-eared Bat	EU_Hab_4 NERC_s41 WCA_s5s94b WCA_s5s94c HabReg_s2
<i>Rhinolophus ferrumequinum</i>	Greater Horseshoe Bat	EU_Hab_2np EU_Hab_4 HBAP NERC_s41 WCA_s5s94b WCA_s5s94c HabReg_s2

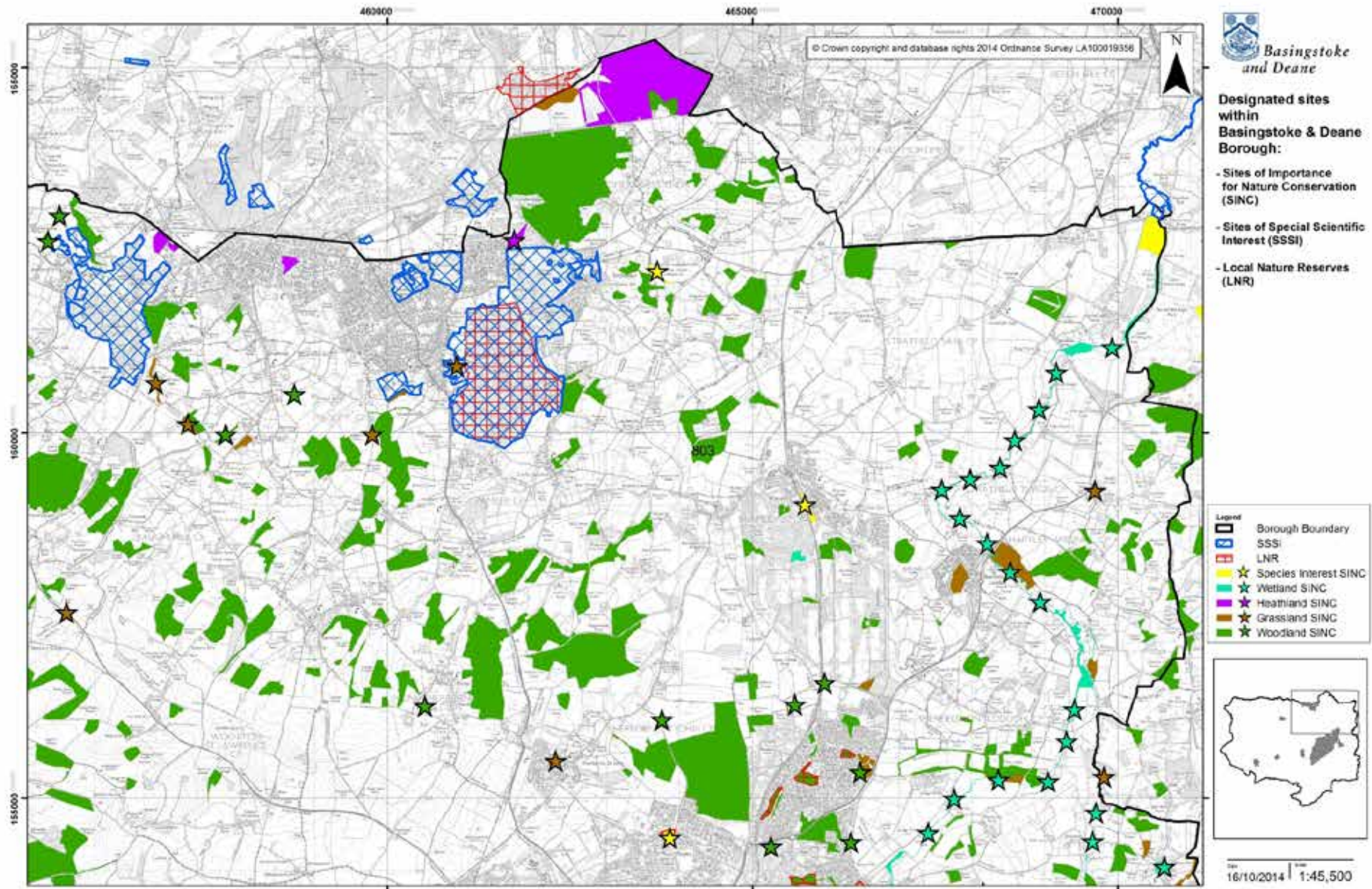
Taxon name	Common Name	Status
Mammals - Terrestrial (non-bats)		
<i>Apodemus flavicollis</i>	Yellow-necked Mouse	HBAP
<i>Arvicola amphibius</i>	European Water Vole	HBAP NERC_s41 WCA_s5s91(k) WCA_s5s91(t) WCA_s5s94a WCA_s5s94b WCA_s5s94c CI
<i>Erinaceus europaeus</i>	West European Hedgehog	NERC_s41
<i>Lepus europaeus</i>	Brown Hare	HBAP NERC_s41
<i>Lutra lutra</i>	European Otter	EU_Hab_2np EU_Hab_4 HBAP NERC_s41 WCA_s5s94b WCA_s5s94c HabReg_s2
<i>Meles meles</i>	Eurasian Badger	PBA
<i>Micromys minutus</i>	Harvest Mouse	HBAP NERC_s41
<i>Muscardinus avellanarius</i>	Hazel Dormouse	EU_Hab_4 HBAP NERC_s41 WCA_s5s94b WCA_s5s94c HabReg_s2 CI

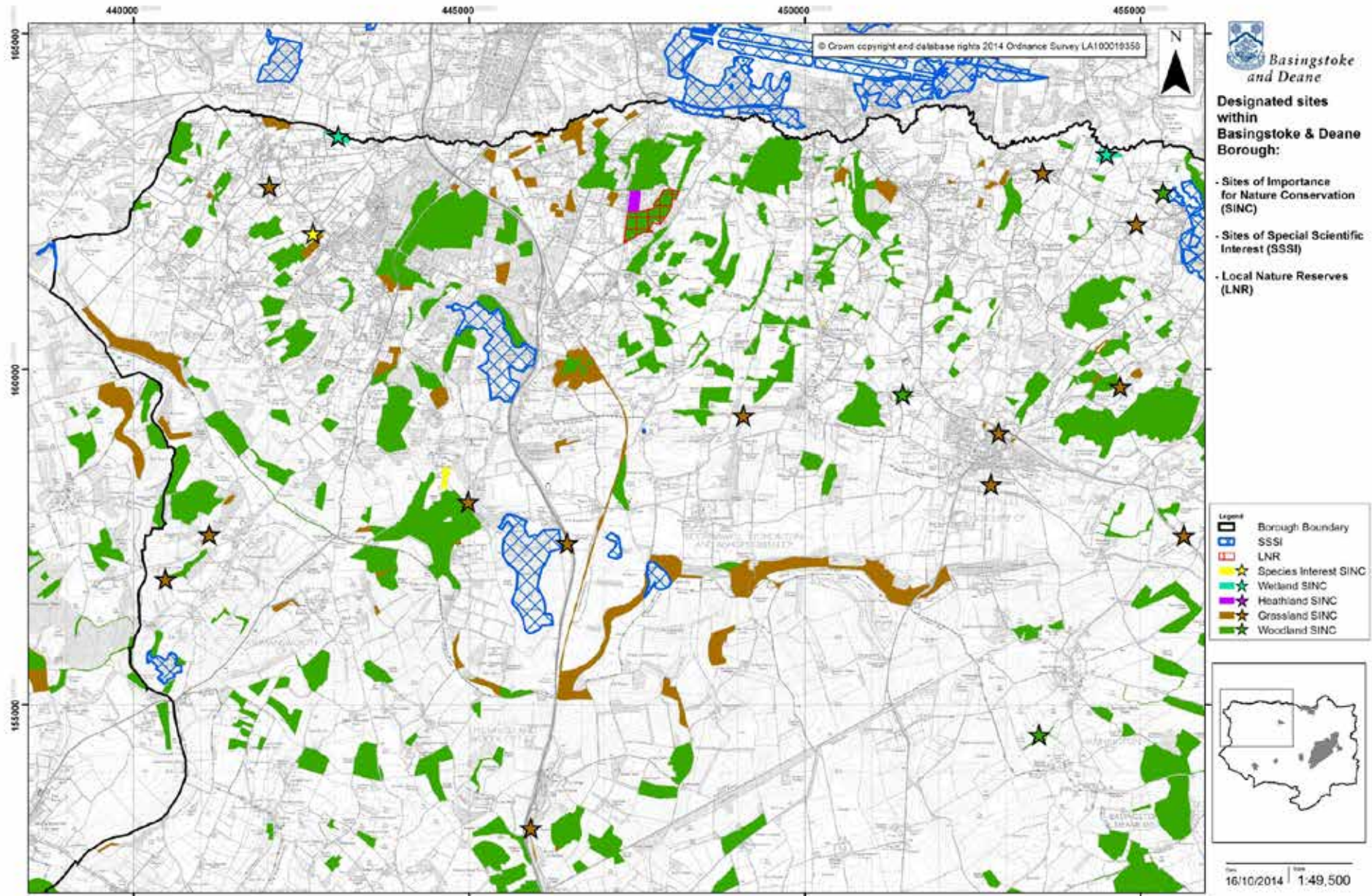
<i>Mustela putorius</i>	Polecat	NERC_s41
<i>Neomys fodiens</i>	Eurasian Water Shrew	HBAP

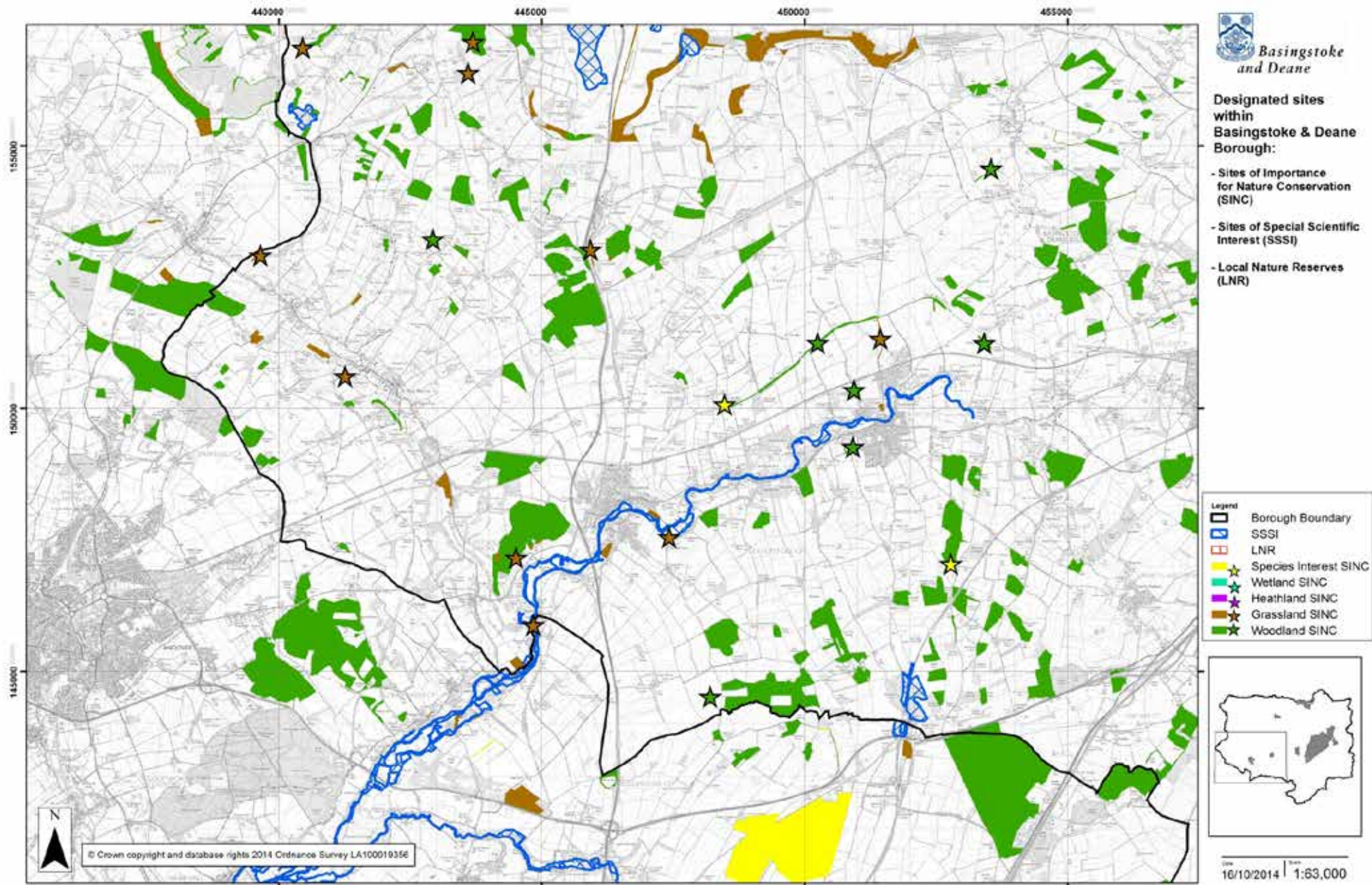
Key to Protected and Notable Species Status Abbreviations

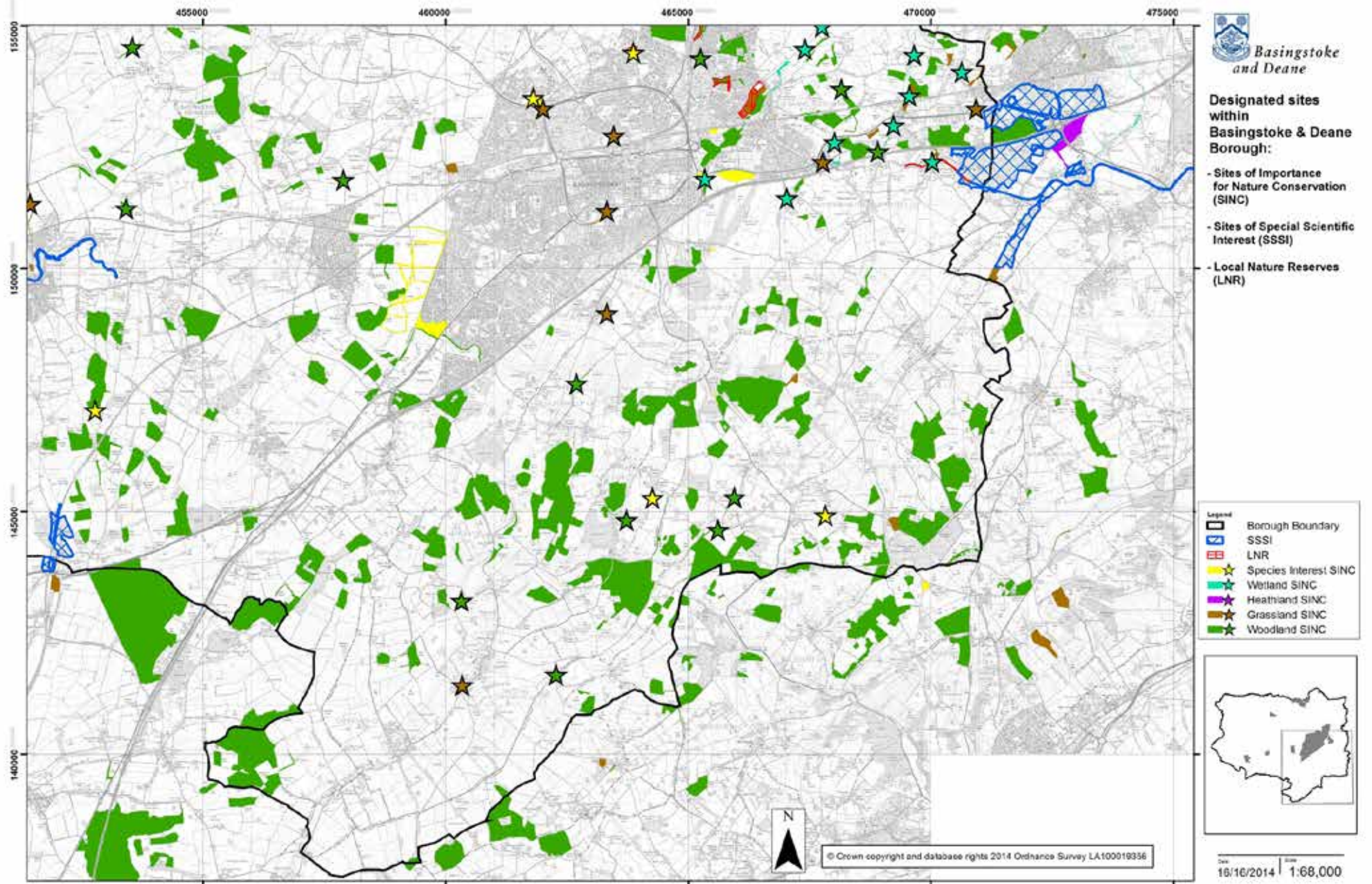
EU_Bird_1	Annex I of the Birds Directive
EU_Hab_2	Annex II of the Habitats Directive (priority species)
EU_Hab_2np	Annex II of the Habitats Directive (non-priority species)
EU_Hab_4	Annex IV of the Habitats Directive
EU_Hab_5	Annex V of the Habitats Directive
IUCN_(pre 94)	See IUCN (pre 1994) guidelines
IUCN_(1994)	See IUCN (1994) guidelines
IUCN_(2001)	See IUCN (2001) guidelines
BOCC_Red	Birds of Conservation Concern Red list
NR	Nationally rare (occurring in 15 or fewer 10km squares in Great Britain)
NS	Nationally scarce (occurring in 16 - 100 10km squares in Great Britain)
NN	Nationally notable (occurring in 16 - 100 10km squares in Great Britain or less than 20 Vice Counties)
HBAP	Hampshire Biodiversity Action Plan species
WCA_s1p1	Schedule 1 Part 1 of the Wildlife and Countryside Act 1981 (as amended)
WCA_s5s91(k)	Schedule 5 Section 9 Part 1 (killing/injuring) of the Wildlife and Countryside Act 1981 (as amended)
WCA_s5s91(t)	Schedule 5 Section 9 Part 1 (taking) of the Wildlife and Countryside Act 1981 (as amended)
WCA_s5s94a	Schedule 5 Section 9 Part 4a of the Wildlife and Countryside Act 1981 (as amended)
WCA_s5s94b	Schedule 5 Section 9 Part 4b of the Wildlife and Countryside Act 1981 (as amended)
WCA_s5s94c	Schedule 5 Section 9 Part 4c of the Wildlife and Countryside Act 1981 (as amended)
WCA_s8	Schedule 8 of the Wildlife and Countryside Act 1981 (as amended)
HabReg_2	Schedule 2 of Conservation of Habitats and Species Regulations 2010 (European Protected Species animal)
HabReg_5	Schedule 5 of Conservation of Habitats and Species Regulations 2010 (European Protected Species plant)
PBA	Protection of Badgers Act 1992
NERC_s41	Priority Species listed under Section 41 of the Natural Environment and Rural Communities Act 2006
NI	National Interest (contact HBIC for further details on the threshold required for species to meet this criteria)
CR	County Rare (contact HBIC for further details on the threshold required for species to meet this criteria)
CS	County Scarce (contact HBIC for further details on the threshold required for species to meet this criteria)
CI	County Interest (contact HBIC for further details on the threshold required for species to meet this criteria)
nHR	North Hampshire Rare (VC12) (contact HBIC for further details on the threshold required for species to meet this criteria)
nHS	North Hampshire Scarce (VC12) (contact HBIC for further details on the threshold required for species to meet this criteria)

Appendix 2: Locations of Designated Sites









Appendix 3: Priority List for Future Green Space Management Plans as outlined in the council's Green Infrastructure Strategy

Site	Proposed date for Plan Production
Popley ponds and Marnel Newt Corridors, Popley	Habitat management plan in action
Millfield, Lychpit	Habitat management plan in action
Down Grange, Kempshott	Habitat management plan in action
War Memorial Park, Eastrop	Green space management plan in action
Daniel Park, Whitchurch	June 2013
Eastrop Park, Eastrop	Green space management plan in action
Beggarwood, Hatch Warren and Beggarwood	2013 to 14
Old Down, Kempshott	2013 to 14
Little Penwood, Highclere	2013 to 14
Chineham Park, Chineham	2014 to 15
Black Dam Ponds and Crabtree Plantation, Black Dam/Old Basing	2014 to 15
Glebe Gardens, Brookvale	2014 to 15
South View Cemetery, Norden	2014 to 15
Wigmore Heath, Tadley	2014 to 15
Tollhouse Meadow, Chineham	2015 to 16
Chineham Woods, Chineham	2015 to 16
Great Binfields Woodland Park, Chineham	2015 to 16
Daneshill Woods, Daneshill	2015 to 16
Victory Park, Brookvale	2016 to 17

Aldermaston Road open Space, Popley	2016 to 17
Park Prewett, Rooksdown	2016 to 17
Down Grange Walled Garden, Kempshott	2016 to 17
Stratton Park, Buckskin	2016 to 17

Appendix 4: Habitat Creation and Restoration Targets as outlined in the council's Green Infrastructure Strategy

Table 4 - Habitat Targets within the Biodiversity Priority Areas and the wider Borough (to 2029)					
	Land owned and/or managed by BDBC		Land outside BDBC ownership/management		
Habitat type	Existing areas to be maintained (ha)	New areas to be created or restored (ha)	Existing areas to be maintained (ha)	New areas to be created or restored (ha)	Total areas in Borough where known (ha/m)
Terrestrial Great Crested Newt habitat (includes scrub and grassland specifically managed for GCNs)	6.27	*	unknown	unknown	6.27
Heathland (includes areas of acid grassland, bog and some woodland)	195.61	3.18	208.57	unknown	407.36
Native woodland (includes ancient semi-natural woodland and wet woodland)	52.56	16.30	592.09	4.67	665.63
Orchard	1.50	0.28	unknown	unknown	1.78
Ponds and other open water (includes lakes and canals)	3.07	0.92	18.16	unknown	22.15
River (only targets for known works along River Loddon given)	-	1045 m	unknown	unknown	1045 m
Species rich grassland (includes many habitat types such as chalk grassland, neutral grassland and floodplain grazing marsh)	16.17	40.91	171.04	4.45	232.57
Fen	unknown at present	*	1.86	unknown	1.86

Table 5: Aspirational Habitat Creation and Restoration Quotas within the Biodiversity Priority Areas

Habitat type	Maintenance (ha)	Restoration / creation (ha)
Fens and Reedbeds	2.34	18.76
Native woodland (<i>including ancient semi-natural woodland and wet woodland</i>)	49.03	2.14
Ponds and other open water (<i>including lakes</i>)	7.68	No comprehensive data available
Species rich grassland (<i>including floodplain grazing marsh, chalk and neutral grassland</i>)	27.20	105.34

Appendix 5: Local Key Habitats and relationship to UK priority habitats (Section 41 habitats of Principal Importance)

Key Borough Habitat Types	
Key Borough Habitats	Relevant UK Priority Habitat
Hedgerows	Hedgerows
Lowland Mixed Deciduous Woodland; Lowland Beech and Yew Woodland; Wet Woodland (incorporating Ancient Semi-Natural Woodland)	Lowland Mixed Deciduous Woodland; Lowland Beech and Yew Woodland; Wet Woodland
Wood-Pasture and Parkland	Wood-Pasture and Parkland
Arable Field Margins	Arable Field Margins
Lowland Meadows (incorporating Unimproved Neutral Grassland)	Lowland Meadows
Calcareous Grassland	Lowland Calcareous Grassland
Floodplain Grazing Marsh / wet grassland	Coastal and Floodplain Grazing Marsh
Heathland / Acid Grassland/ Bog	Lowland Heathland; Lowland Dry Acid Grassland
Wetlands	Lowland Fens; Purple moor-grass and rush pasture; Reedbeds Wet woodland
Ponds and Other Standing Open Water	Eutrophic Standing Waters; Ponds
Chalk Rivers	Rivers
Rivers and Streams	Rivers
Open mosaic habitats on previously developed land (as defined by the relevant UK Priority Habitat type)	Open mosaic habitats on previously developed land
Traditional Orchards (as defined by the relevant UK Priority Habitat type)	Traditional Orchards
Basingstoke Canal	None
Species-Rich Road Verges and Roundabouts	None
Green Lanes	None

