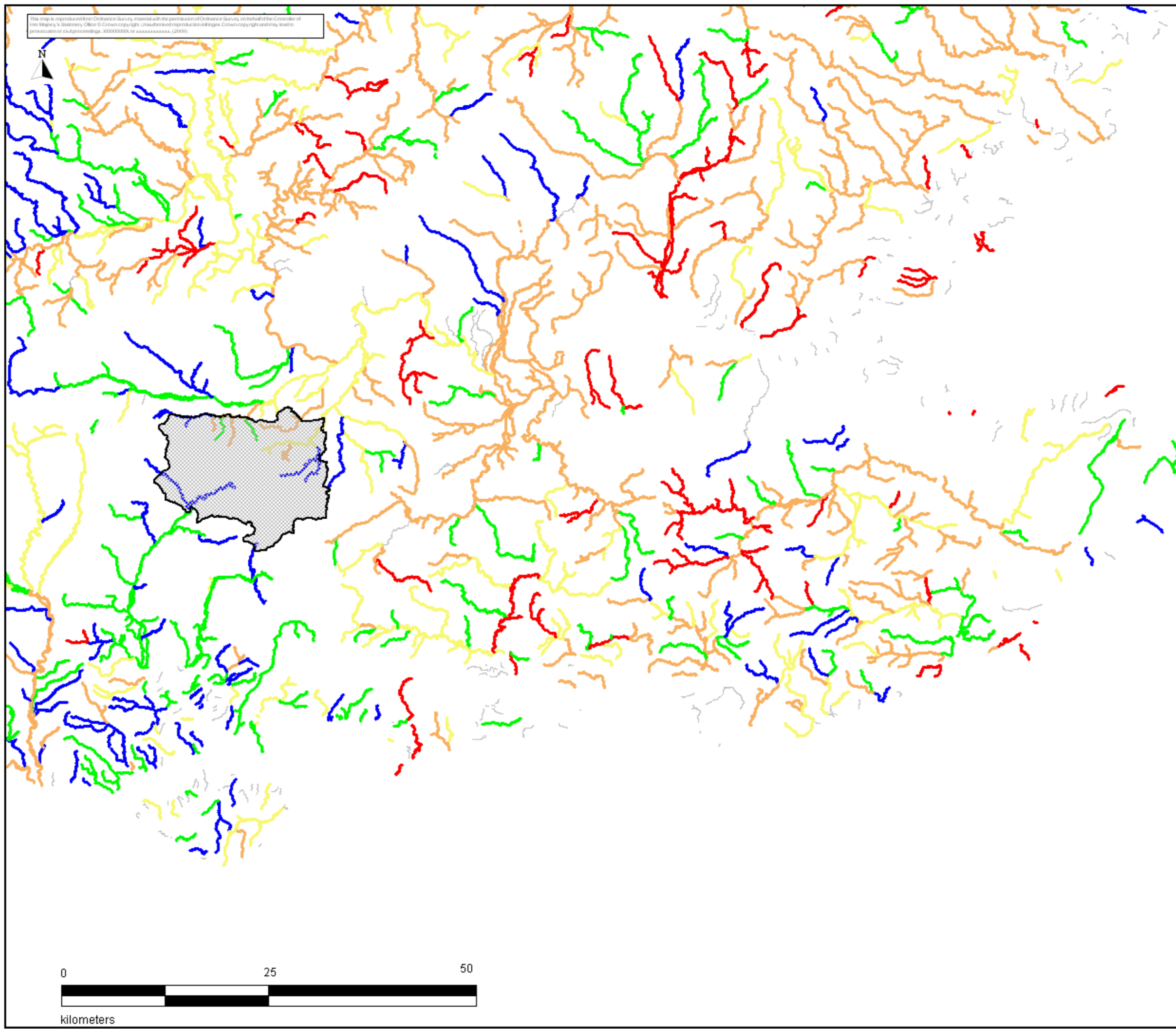



The map is reproduced from Ordnance Survey material with the permission of Ordnance Survey on behalf of the Controller of Her Majesty's Stationery Office. © Crown copyright. Unauthorised reproduction is illegal. Crown copyright and any other reproduction or copyright. XXXXXXXXXX, YYYYYYYYYY, ZZZZZZZZZZ (2006)



Phosphate classification

—	(1084)
—	Bad (251)
—	Good (972)
—	High (1479)
—	Moderate (885)
—	Poor (1093)

 Basingstoke and Deane BC boundary

Client:

Halcrow Group Ltd
Buckley Park, Gairloch, SH4 0DB
Tel: +44 (0)1793 812479 Fax: +44 (0)1793 812089
www.halcrow.com
www.halcrow.com/watercycleplanning



Project:
Basingstoke water cycle study

Drawing:
WFD phosphate classification

