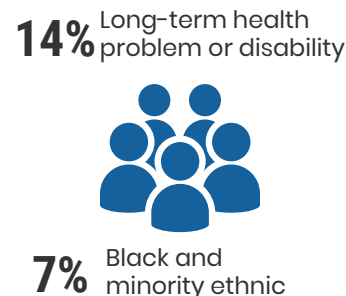
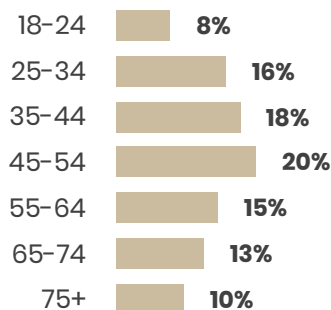
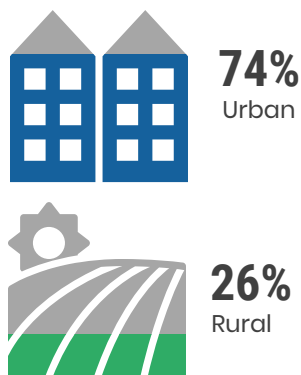
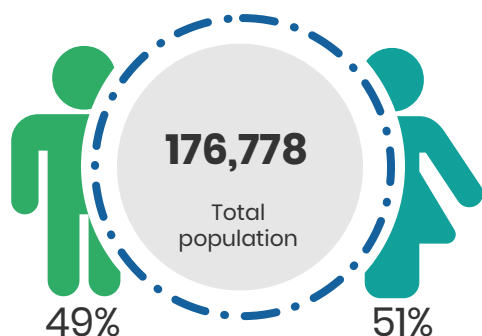


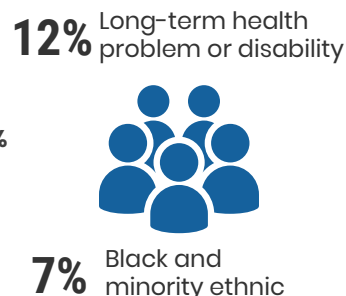
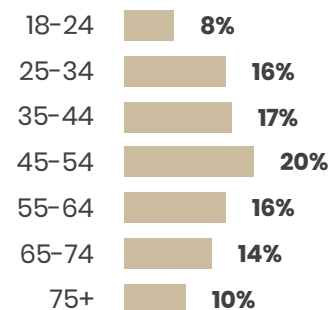
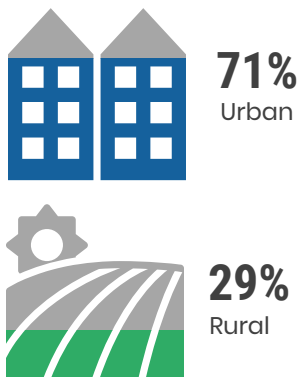
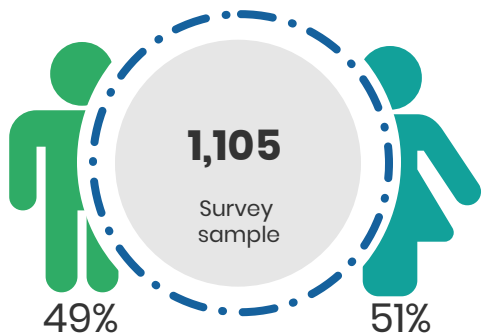


RESIDENTS' SURVEY 2019

AREA PROFILE

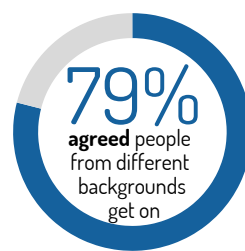
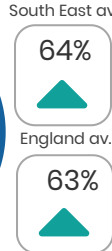
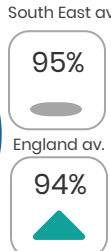


SURVEY PROFILE

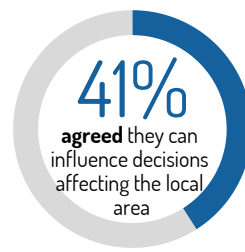
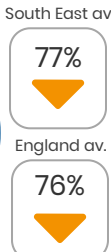
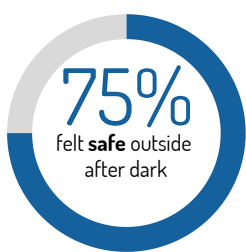


ATTITUDES TO THE LOCAL AREA AND COUNCIL

n=1,105 Result above the same as or below the South East or England average score



No comparable data.



No comparable data.

WHAT MAKES AN AREA A GOOD PLACE TO LIVE

n=1,105



WHAT IS IN MOST NEED OF IMPROVEMENT

n=1,105



SERVICE IMPORTANCE

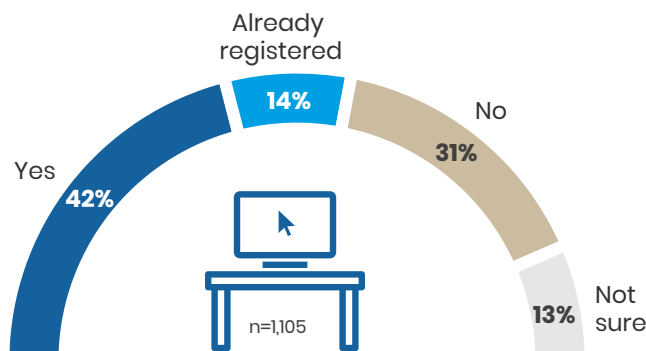
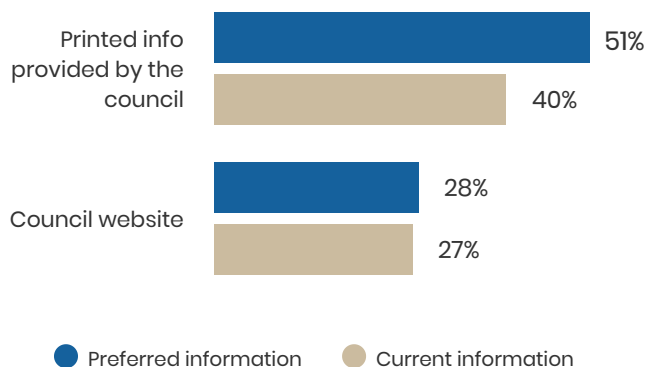
n=1,105



COMMUNICATION

n=1,105

Top two current and preferred channels:



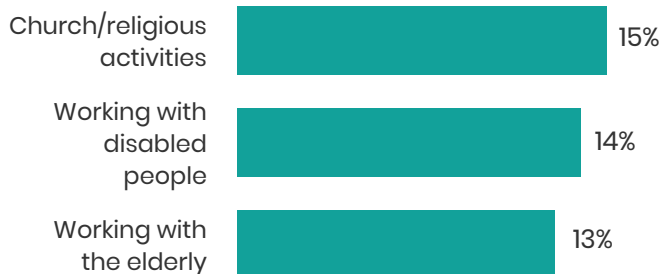
42% would consider registering on the council's website

VOLUNTEERING



Activity type:

n=197



Main barriers to volunteering:

- Lack of time among communities and individuals
- Not knowing what opportunities are available
- Unwillingness among communities and individuals

Results are based on a representative sample of Basingstoke and Deane residents (n=1,105), returning a confidence interval of ±2.9% at the 95% confidence level.

Produced by M-E-L Research, independent research consultants on behalf of Basingstoke and Deane Borough Council.