



Sherfield on Loddon Neighbourhood Plan Information Statement

1. About this statement

A referendum on the Sherfield on Loddon Neighbourhood Plan will be held on Tuesday 20 February 2018. This statement provides information on the referendum that is taking place, and the neighbourhood plan it relates to.

2. Referendum on the Sherfield on Loddon Neighbourhood Plan

A referendum asks you to vote 'yes' or 'no' to a question. For this referendum you will receive a ballot paper which asks the following question:

Do you want Basingstoke and Deane Borough Council to use the Neighbourhood Plan for Sherfield on Loddon to help it decide planning applications in the neighbourhood area?

3. What is a neighbourhood area?

The neighbourhood area for Sherfield on Loddon is identified on the map which is included at the end of this information statement. The parish of Sherfield on Loddon was designated for the purposes of neighbourhood planning on 22 March 2013. The neighbourhood area was then amended on 10 August 2015 to remove the Sherfield Park development.

The referendum area is identical to the area which has been designated as the Sherfield on Loddon neighbourhood area. The independent examiner also recommended that the Plan proceed to a referendum based on the Sherfield on Loddon Neighbourhood Area, as approved by the council.

4. Am I entitled to vote in the Referendum?

A person is entitled to vote in the referendum if on the 2 February 2018:

- he or she is entitled to vote in a local government election in the referendum area; and
- his or her qualifying address for the election is in the referendum area. A persons qualifying address is, in relation to a person registered in the register of electors, the address in respect of which he or she is entitled to be registered.

The referendum will be conducted based in accordance with procedures similar to those used at local government elections.

5. How do I vote in the Referendum?

You will be given a ballot paper at the polling station and you can vote by putting a cross (X) in the 'Yes' or 'No' box on your ballot paper. You will only be allowed to put a cross in one box or your vote will not be counted.

If more than 50% of individuals vote 'yes' in the referendum, then Basingstoke and Deane Borough Council will 'make' the Sherfield on Loddon Neighbourhood Plan. Subject to a positive vote at referendum, the Sherfield on Loddon Neighbourhood Plan will form part of the statutory development plan for the borough and therefore the implementation of the policies contained within it will impact on planning decisions made in the borough, specifically in relation to Sherfield on Loddon.

If more people vote 'no' than 'yes', then the Neighbourhood Plan will not become part of the Development Plan for the local area.

6. What are the referendum documents and where can you view them?

There are a number of documents that are available to view as part of the referendum. These are listed below:

- The referendum version of the Sherfield on Loddon Neighbourhood Plan;
- The independent examiner's report on the Sherfield on Loddon Neighbourhood Plan;
- A summary of representations submitted to the independent examiner following consultation on the Plan;
- A Decision Statement from the Local Planning Authority which confirms the draft Neighbourhood Plan meets the basic conditions and other legislative requirements. It also confirms that the neighbourhood plan can proceed to referendum;
- A statement that sets out general information in respect of town and country planning, which includes neighbourhood planning.

A hard copy of all of the above documents and this Information Statement can be inspected at:

- Basingstoke and Deane Borough Council, Civic Offices, London Road, Basingstoke, RG21 4AH (8:30am – 17:00 pm Mon – Thurs, 8:30am – 16:30pm Fri)
- Basingstoke Discovery Centre, Festival Place Shopping Centre, Basingstoke, RG21 7LS (8.30am to 6.30pm Monday to Friday and 8.30am to 4.30pm Saturday)
- Chineham Library, Chineham District Centre, Basingstoke, RG24 8BQ (9:30 – 17:00 Tuesday, Wednesday and Friday, 9:30 – 19:00 Thursday, 9:30 – 16:00 Sat)
- House Twenty8, Sherfield on Loddon
- The White Hart, Sherfield on Loddon
- The Four Horseshoes, Sherfield on Loddon
- The Salon, Sherfield on Loddon
- St Leonard's Church Meeting Room, Sherfield on Loddon

In addition, all of the documents can be viewed online on the council's website at <https://www.basingstoke.gov.uk/SOLNP>

7. Referendum Expenses

Expenses can be incurred by an individual or body during the period of the referendum for referendum purposes.

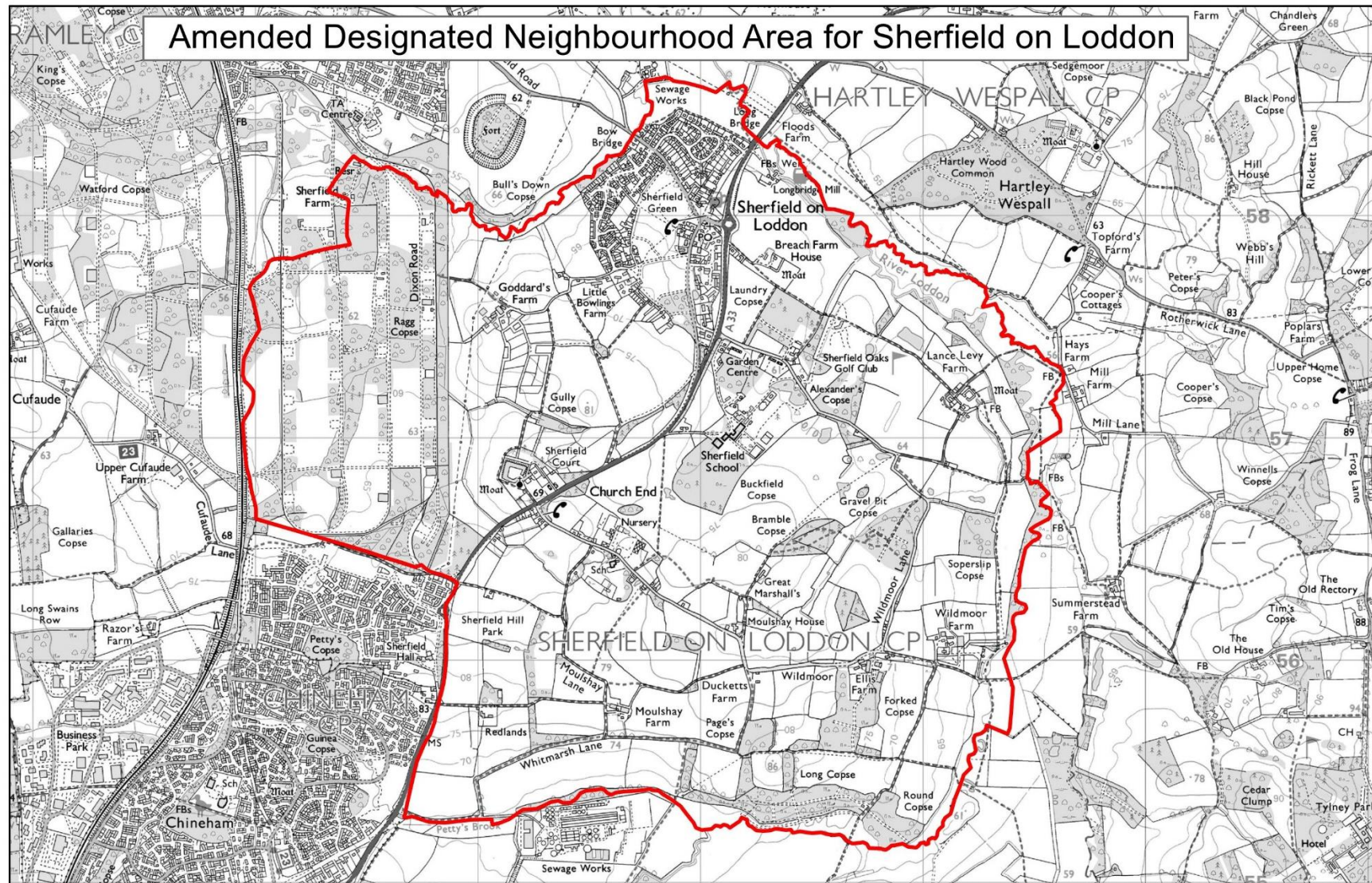
The referendum expenses limit that will apply (as at 16 January 2018) in relation to this referendum is £2435.34. The number of persons entitled to vote in the referendum is 1,243.

8. How to find out more:

Further general information on neighbourhood planning is available on the council's website at: <http://www.basingstoke.gov.uk/neighbourhoodplan>

For queries regarding planning issues and neighbourhood planning in general, please contact the Planning Policy Team on 01256 845450 or by email at local.plan@basingstoke.gov.uk.

Referendum Area



© Crown copyright and database rights 2013 Ordnance Survey LA100019356

Key

 Amended Neighbourhood Area Boundary