



Basingstoke
and Deane

Green Infrastructure Strategy for Basingstoke and Deane (2018 to 2029)

Appendix F - Baseline and Analysis Mapping (Part I)



Appendix F (Part I)

Green Infrastructure Strategy (July 2013)

Plan Number	Title
Plan A	Reference Plan
Plan 1	Existing GI Resource - Basingstoke 1 of 5
Plan 2	Existing GI Resource - Basingstoke 2 of 5
Plan 3	Existing GI Resource - Basingstoke 3 of 5
Plan 4	Existing GI Resource - Basingstoke 4 of 5
Plan 5	Existing GI Resource - Basingstoke 5 of 5
Plan 6	Existing GI Resource – Bramley
Plan 7	Existing GI Resource – Kingsclere
Plan 8	Existing GI Resource – Oakley
Plan 9	Existing GI Resource – Overton
Plan 10	Existing GI Resource – Tadley
Plan 11	Existing GI Resource – Whitchurch
Plan 12	Borough Natural GI Resource
Plan 13	Borough Countryside Access Resource
Plans 14-25 (see Green Infrastructure Strategy – Review and Update (September 2017))	
Plan 26	Biodiversity Priority Area (BPA) Loddon Valley
Plan 27	Biodiversity Priority Area (BPA) River Test

Basingstoke and Deane Borough Council

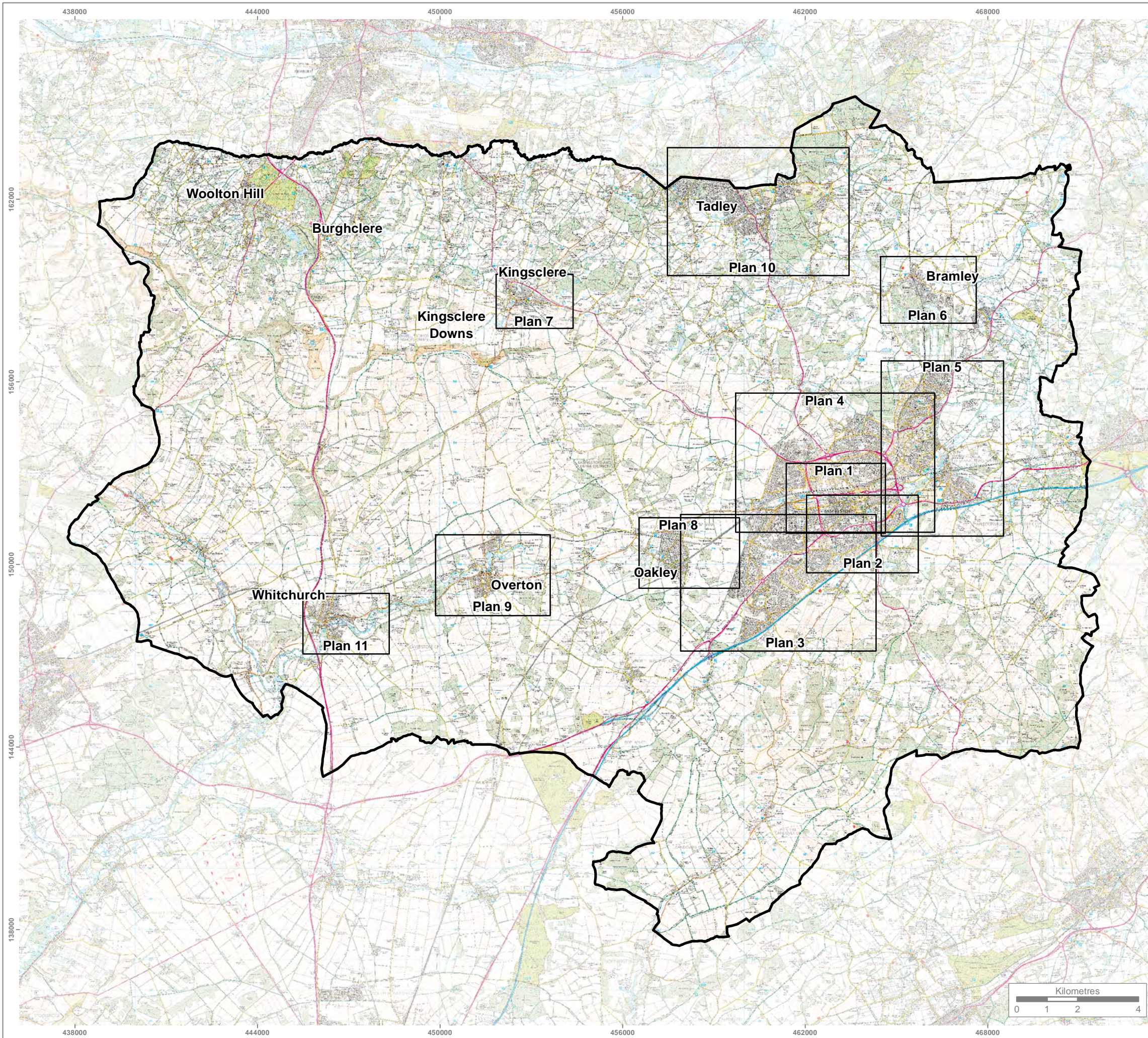
Green Infrastructure Strategy – Plans (Volume 1, plans 1-13)

July 2013

Contents

Volume 1

- Plan 1: Existing GI Resource - Basingstoke 1 of 5
- Plan 2: Existing GI Resource - Basingstoke 2 of 5
- Plan 3: Existing GI Resource - Basingstoke 3 of 5
- Plan 4: Existing GI Resource - Basingstoke 4 of 5
- Plan 5: Existing GI Resource - Basingstoke 5 of 5
- Plan 6: Existing GI Resource - Bramley
- Plan 7: Existing GI Resource - Kingsclere
- Plan 8: Existing GI Resource - Oakley
- Plan 9: Existing GI Resource - Overton
- Plan 10: Existing GI Resource – Tadley
- Plan 11: Existing GI Resource - Whitchurch
- Plan 12: Borough Natural GI Resource
- Plan 13: Borough Countryside Access Resource



KEY

 Basingstoke and Deane Borough Boundary



Reproduced by permission of Ordnance Survey on behalf of Her Majesty's Stationary Office.
 Contains OS data © Crown Copyright and database right 2017. All rights reserved.
 Base mapping provided by client



Rev	Description	Drawn	Approved	Date



Genesis Centre, Birchwood Science Park, Warrington WA3 7BH
 Tel 01925 844004 e-mail tep@tep.uk.com www.tep.uk.com

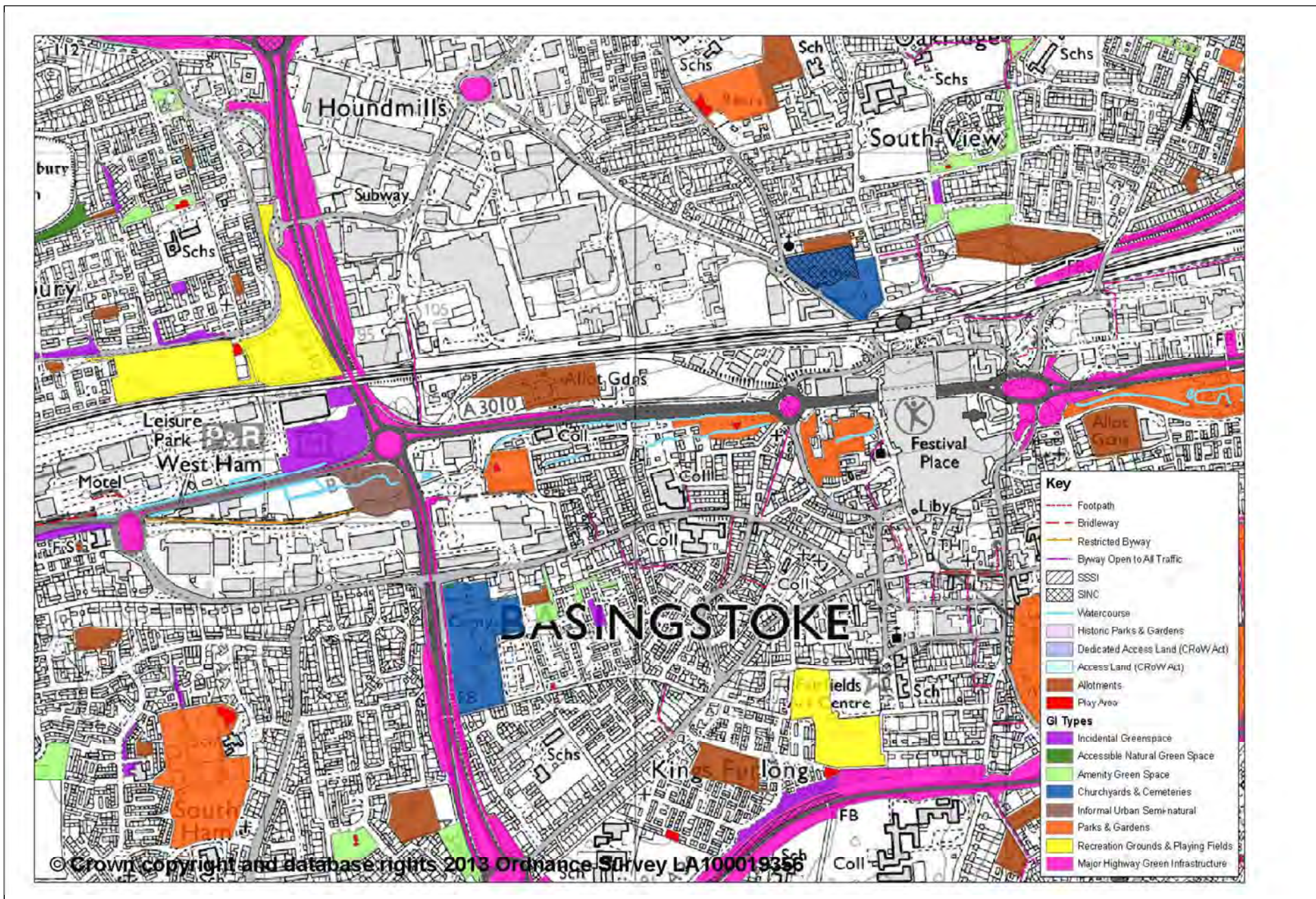
Project
Basingstoke GI Strategy

Title
Plan A - Reference Plan

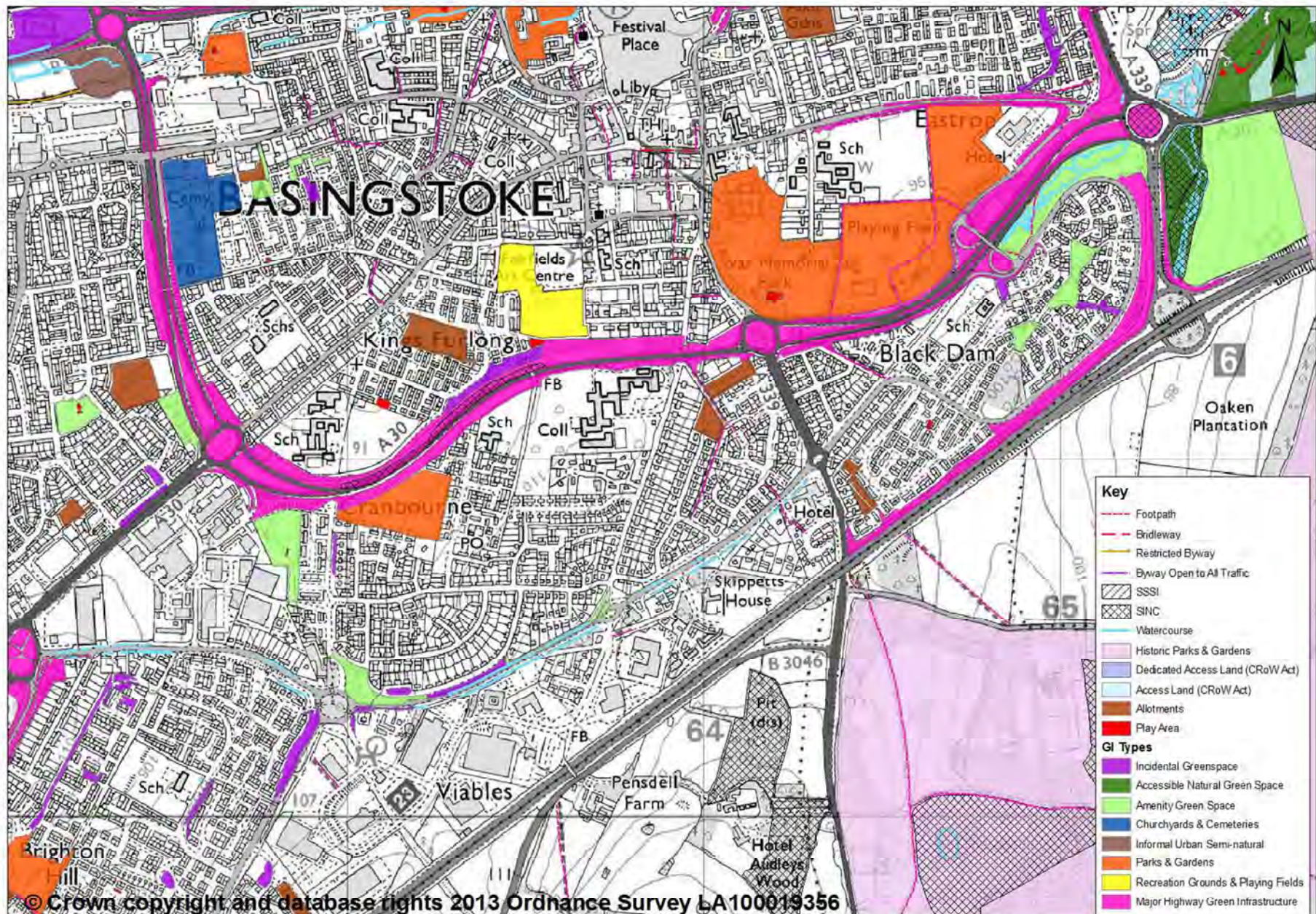
Drawing Number
G6297.045

Drawn	Checked	Approved	Scale	Date
RE	TJ	TJ	1:125,000 @ A3	22/06/2018

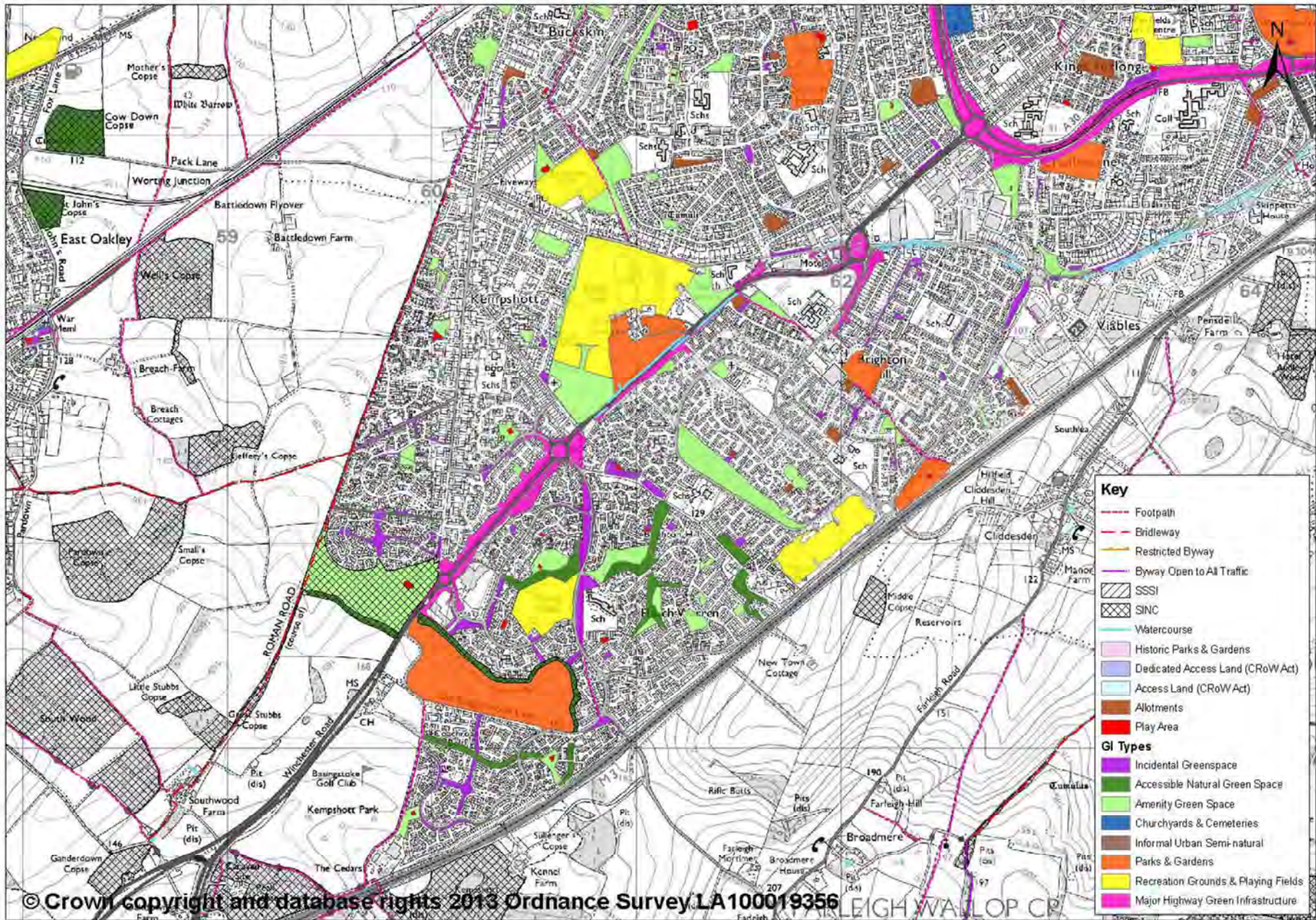
Plan 1 – Existing GI Resource - Basingstoke 1 of 5



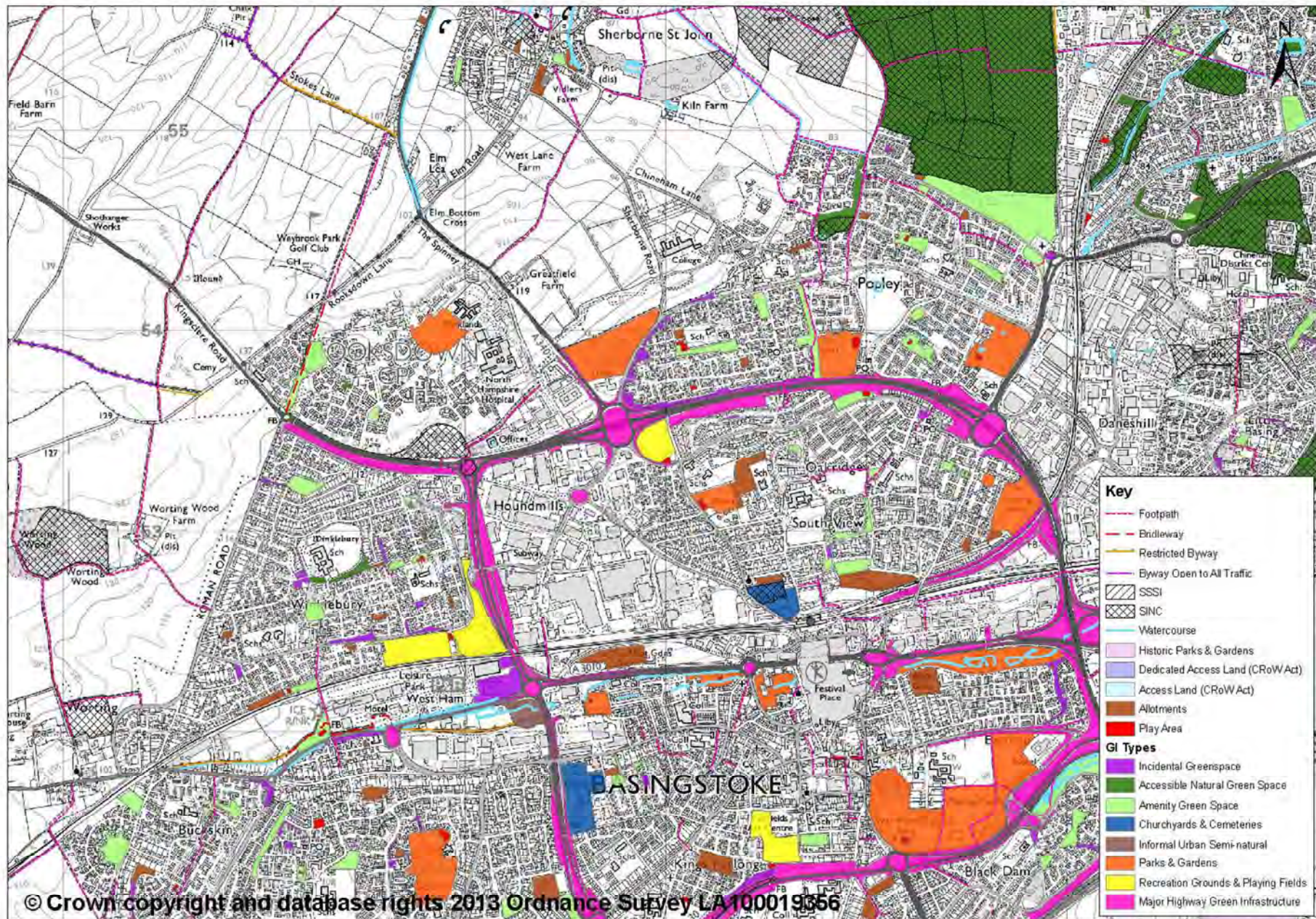
Plan 2 – Existing GI Resource - Basingstoke 2 of 5



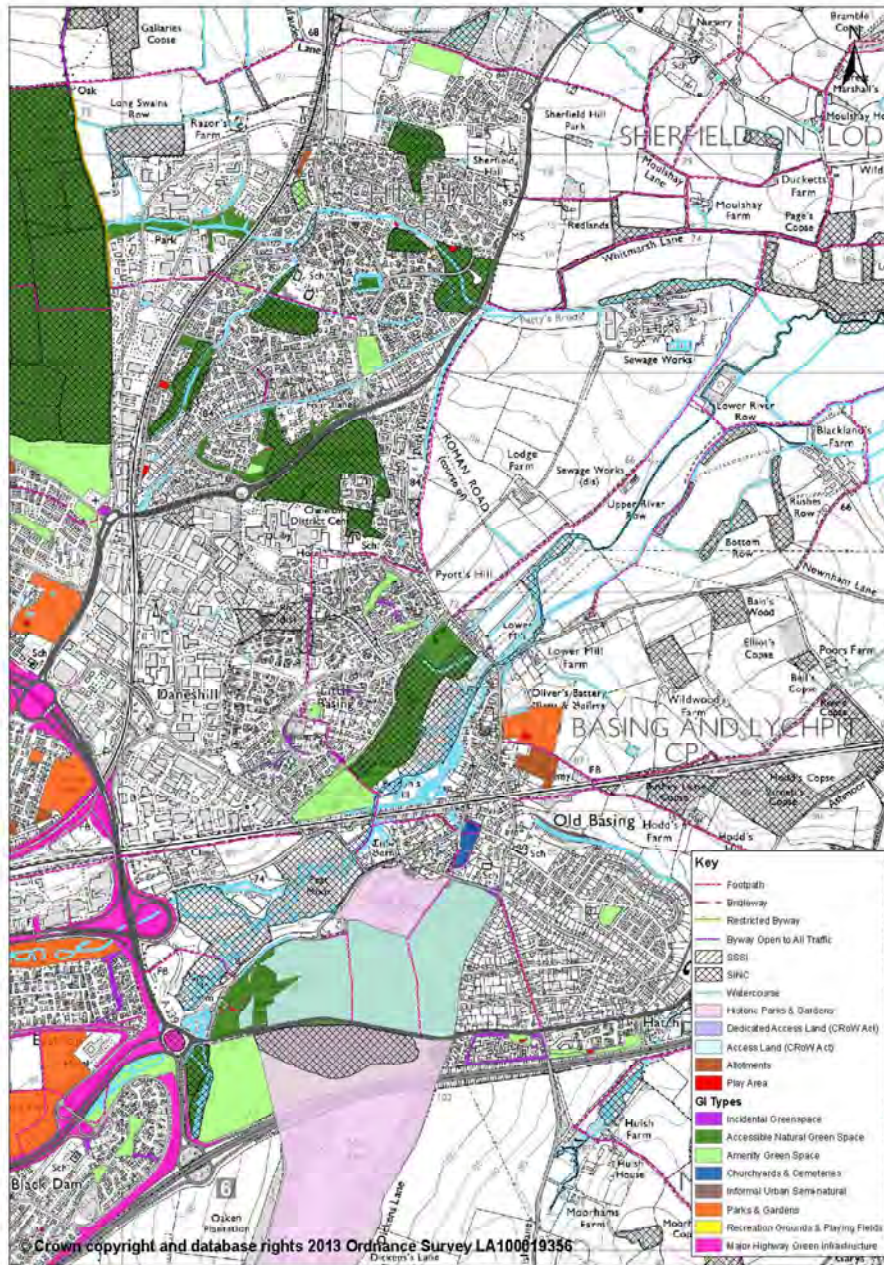
Plan 3 – Existing GI Resource - Basingstoke 3 of 5



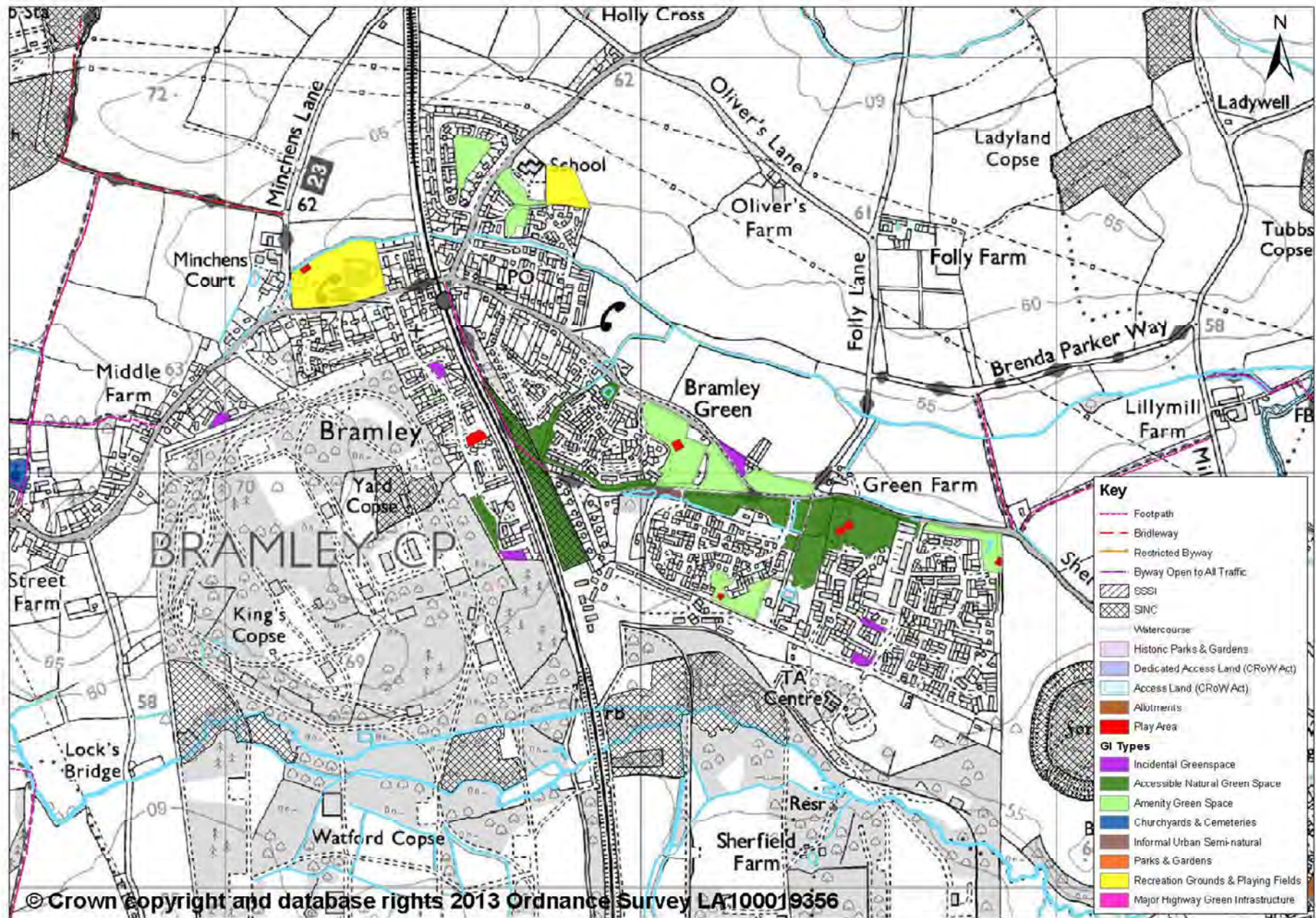
Plan 4 - Existing GI Resource - Basingstoke 4 of 5



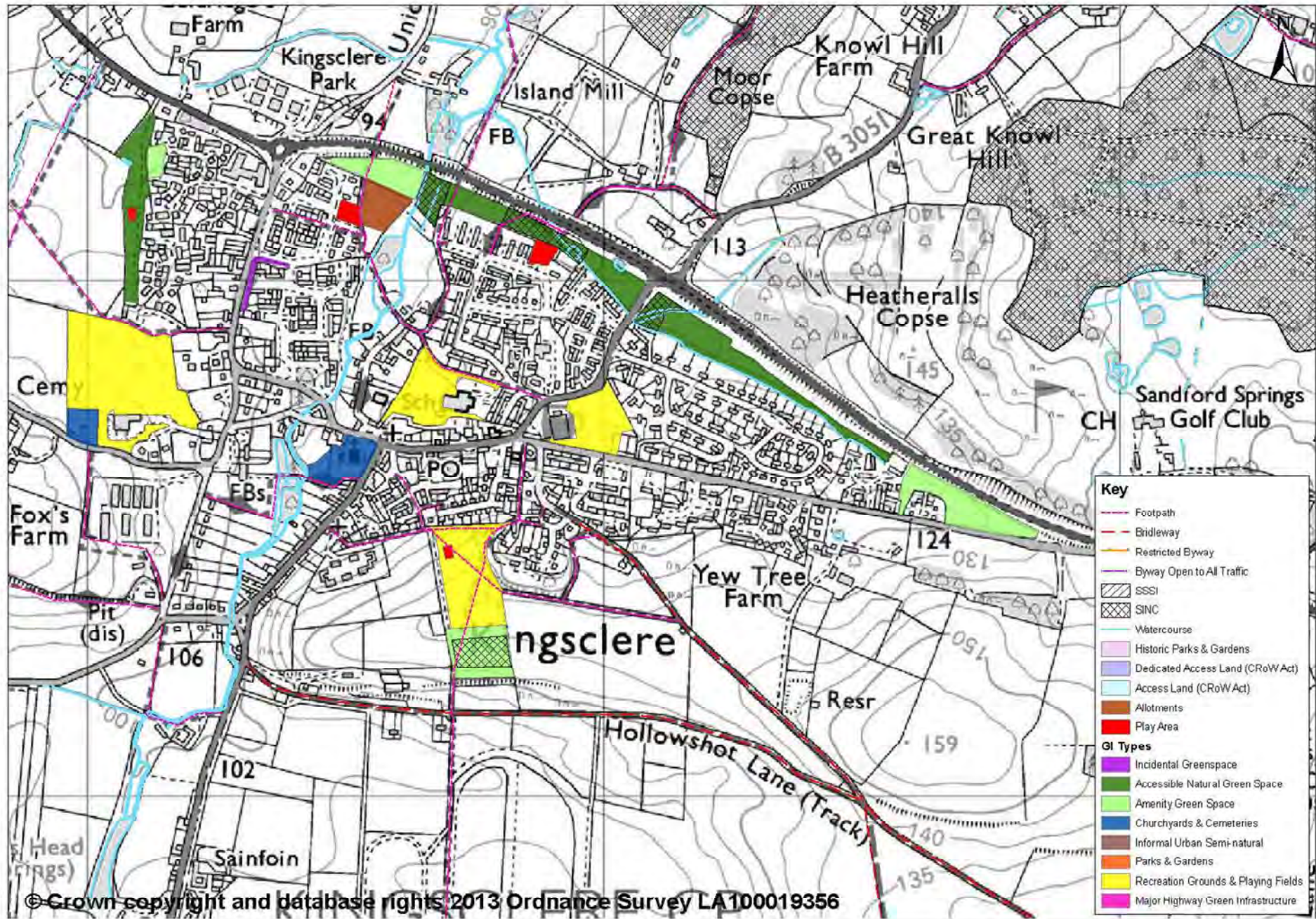
Plan 5 – Existing GI Resource - Basingstoke 5 of 5



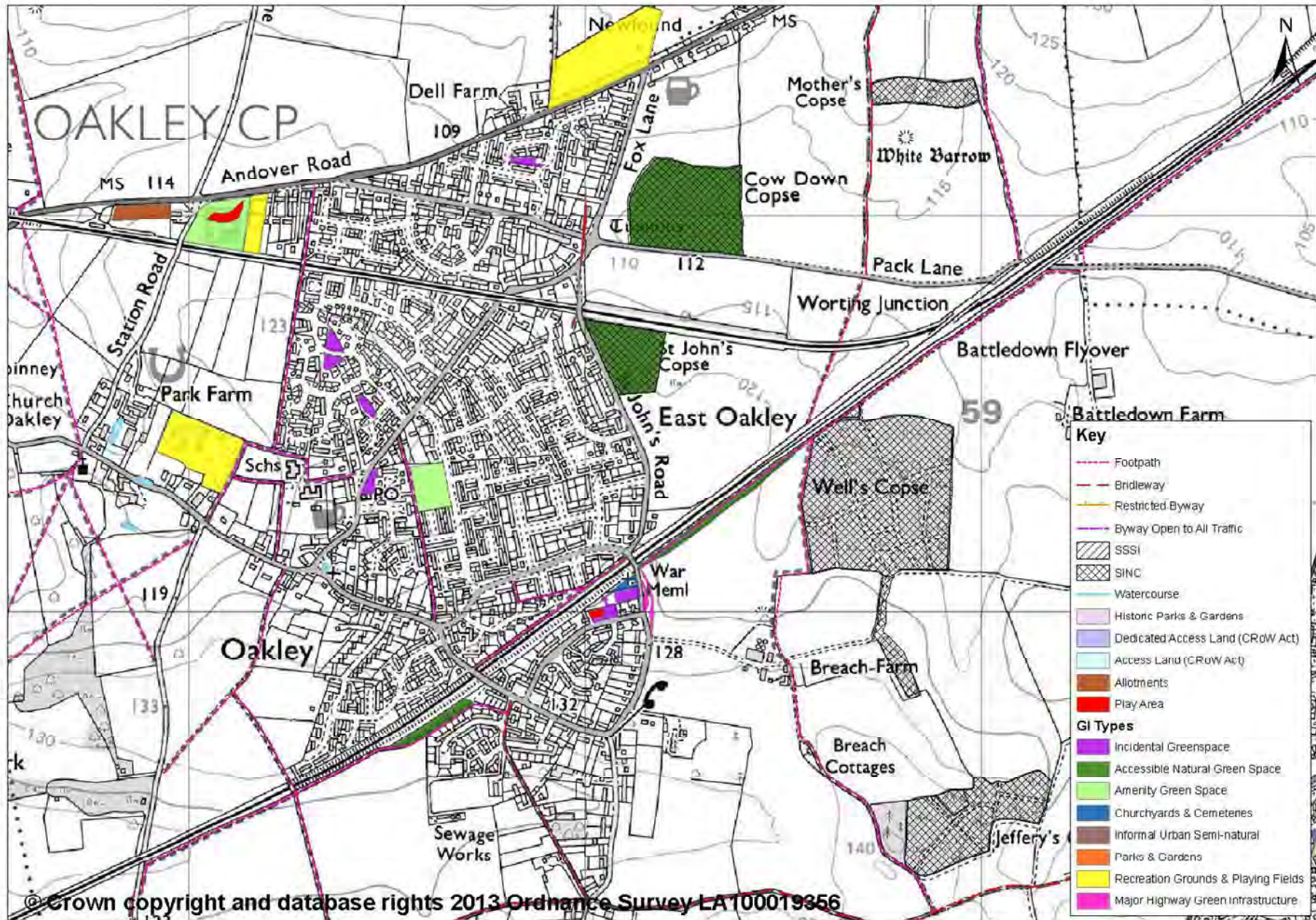
Plan 6 – Existing GI Resource - Bramley



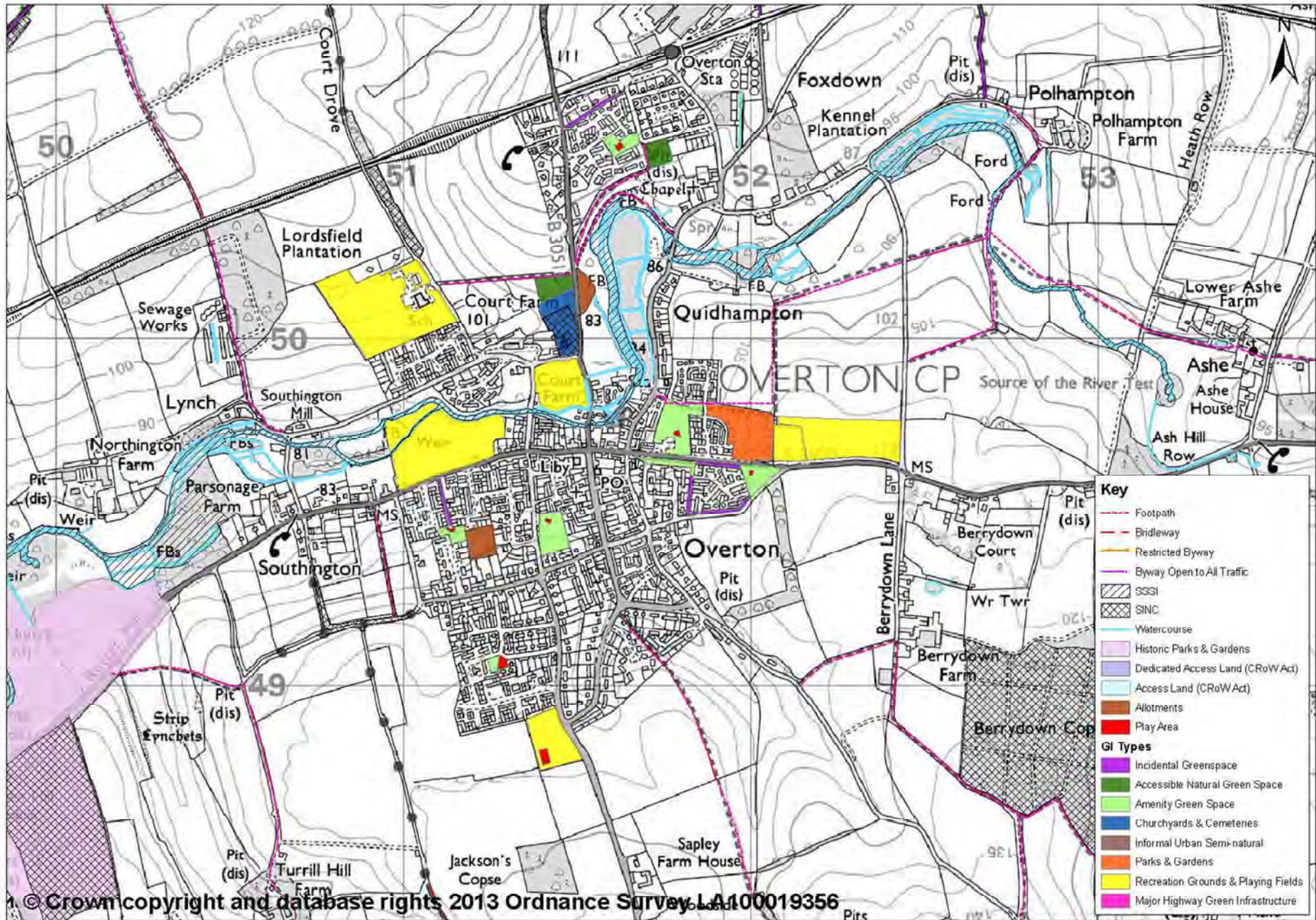
Plan 7– Existing GI Resource - Kingsclere



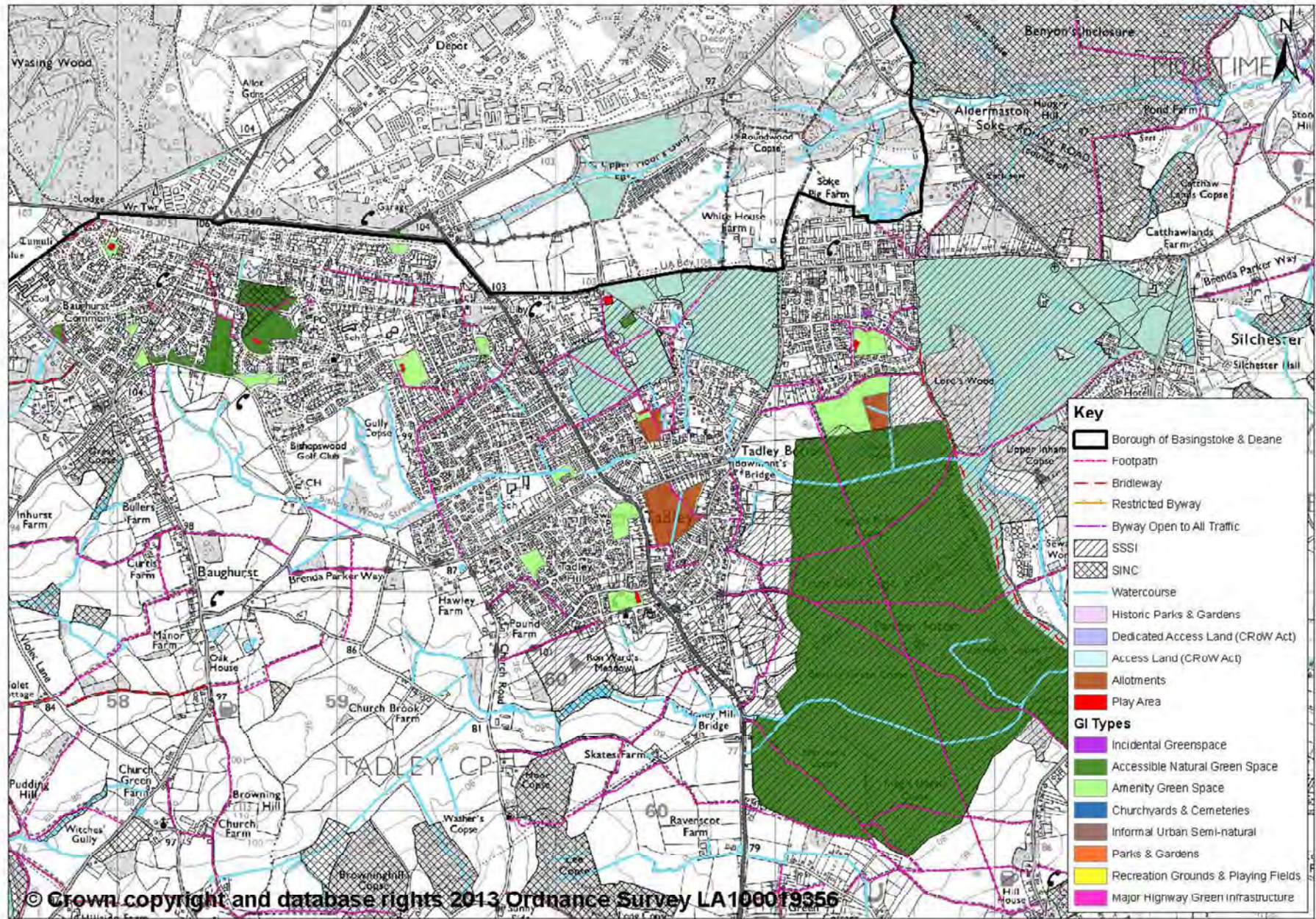
Plan 8 – Existing GI Resource - Oakley



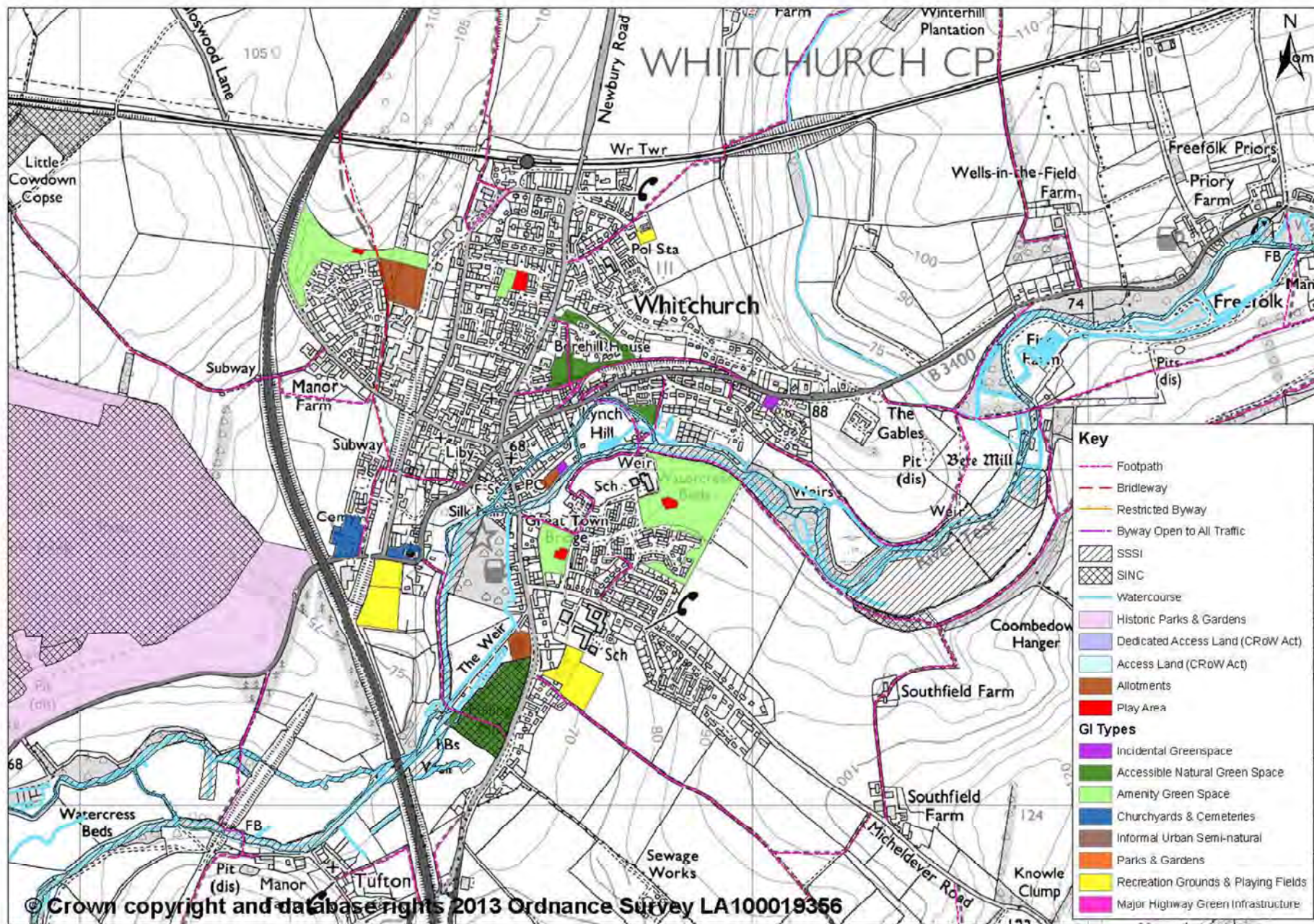
Plan 9 – Existing GI Resource - Overton



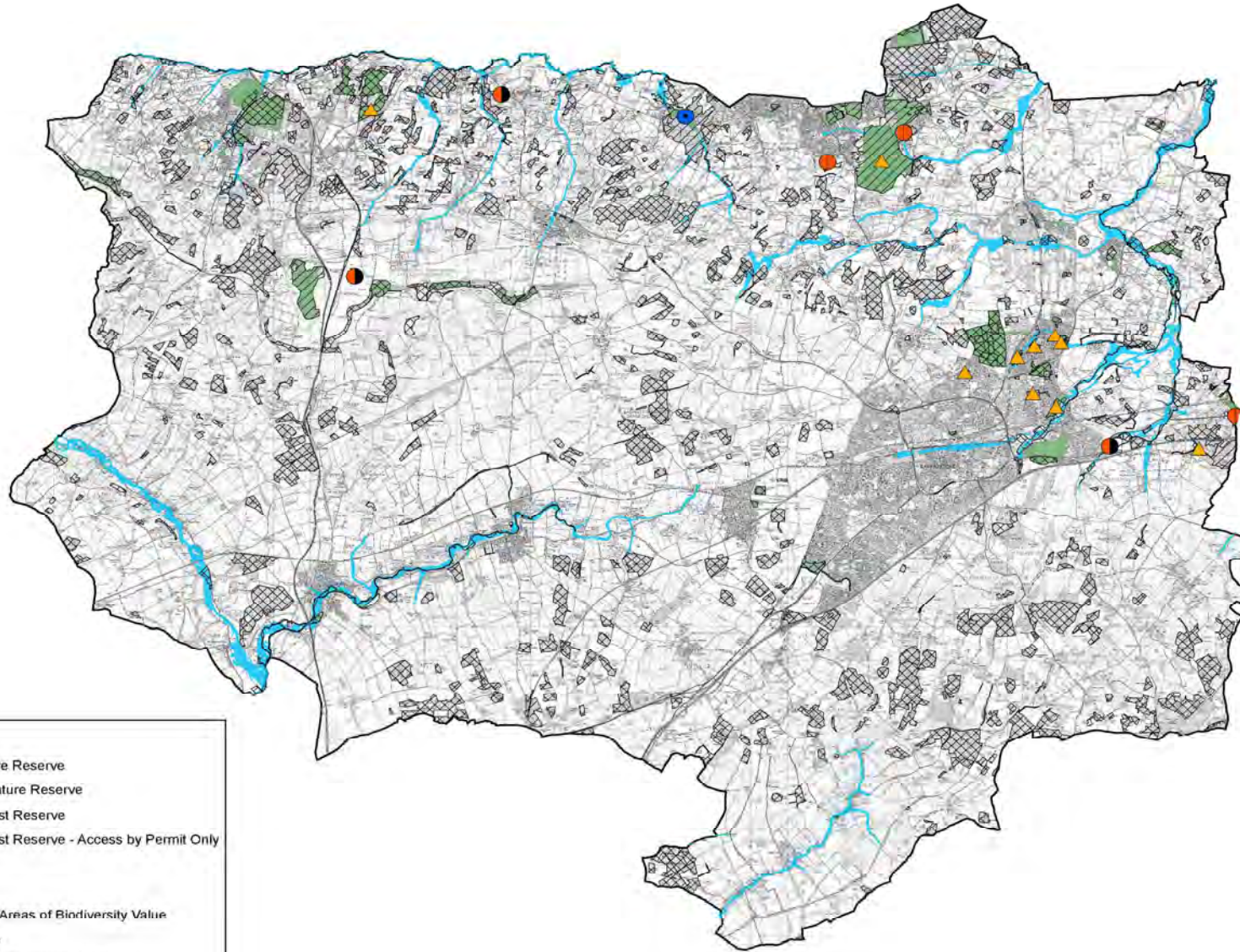
Plan 10 – Existing GI Resource - Tadley



Plan 11 – Existing GI Resource - Whitchurch



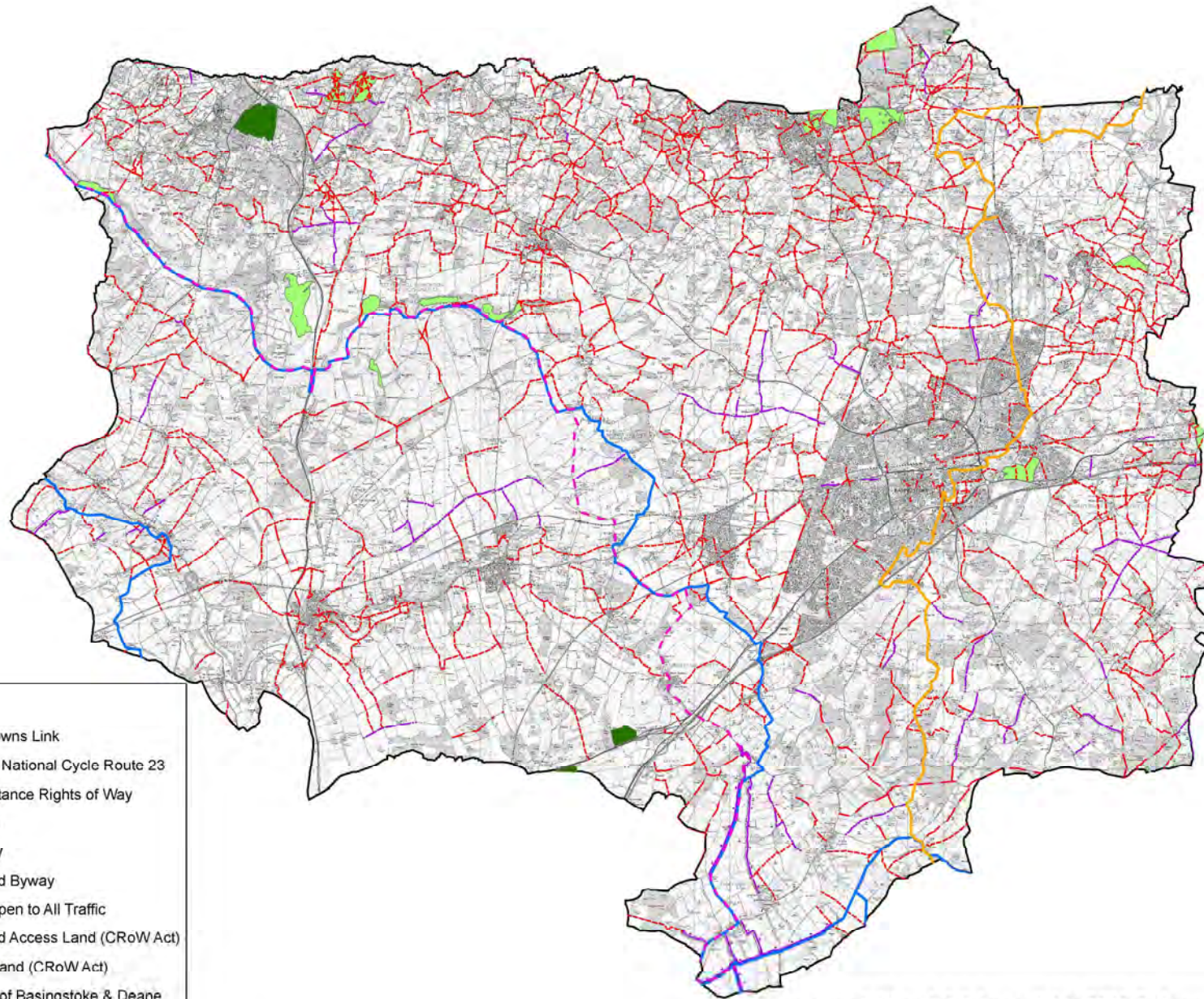
Plan 12 – Borough Natural GI Resource



Key

- ▲ Local Nature Reserve
- National Nature Reserve
- Wildlife Trust Reserve
- Wildlife Trust Reserve - Access by Permit Only
- ▨ SSSIs
- ▩ SINCs
- Accessible Areas of Biodiversity Value
- Flood Zone
- Borough of Southampton & District

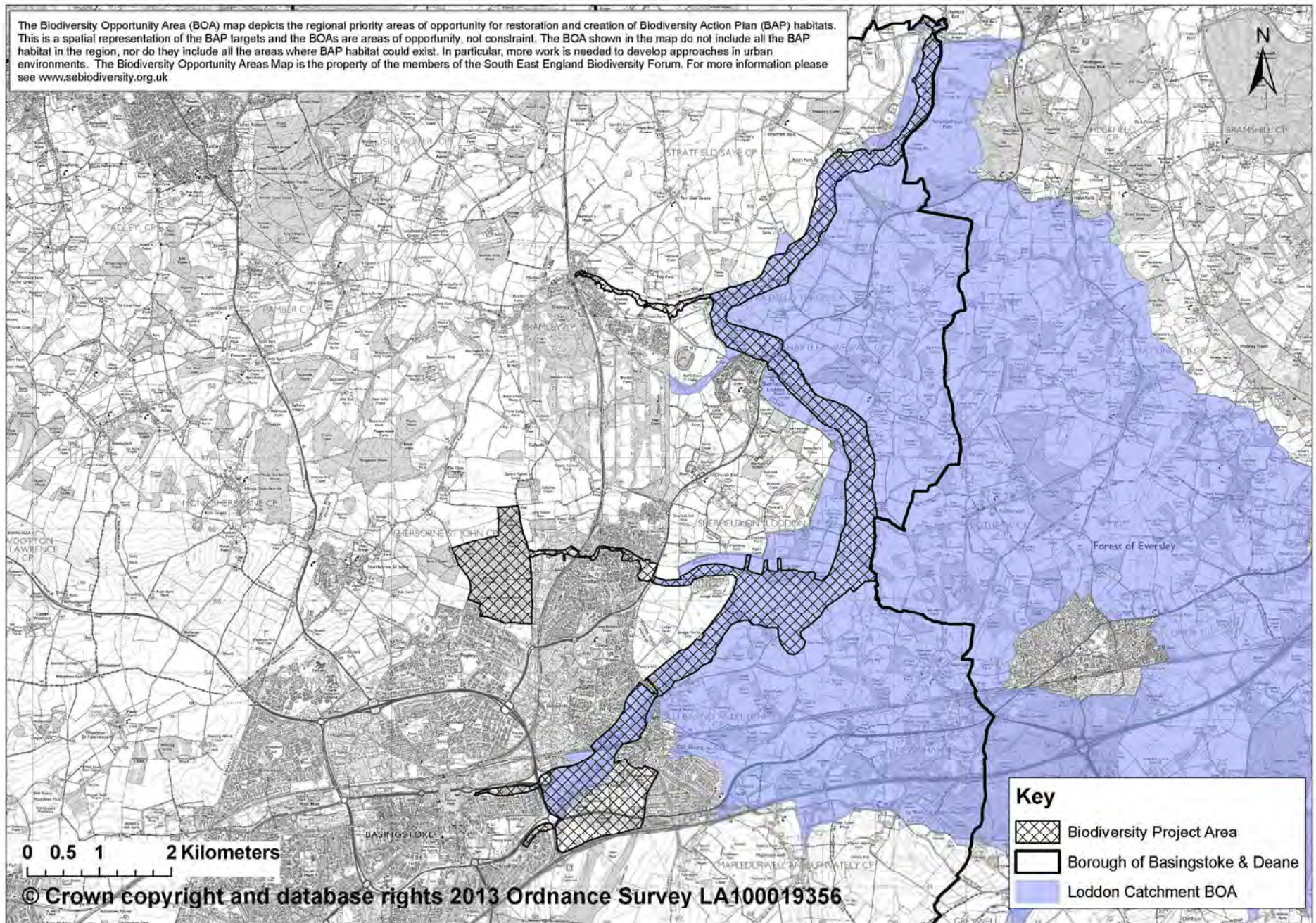
Plan 13 – Borough Countryside Access Resource



Key

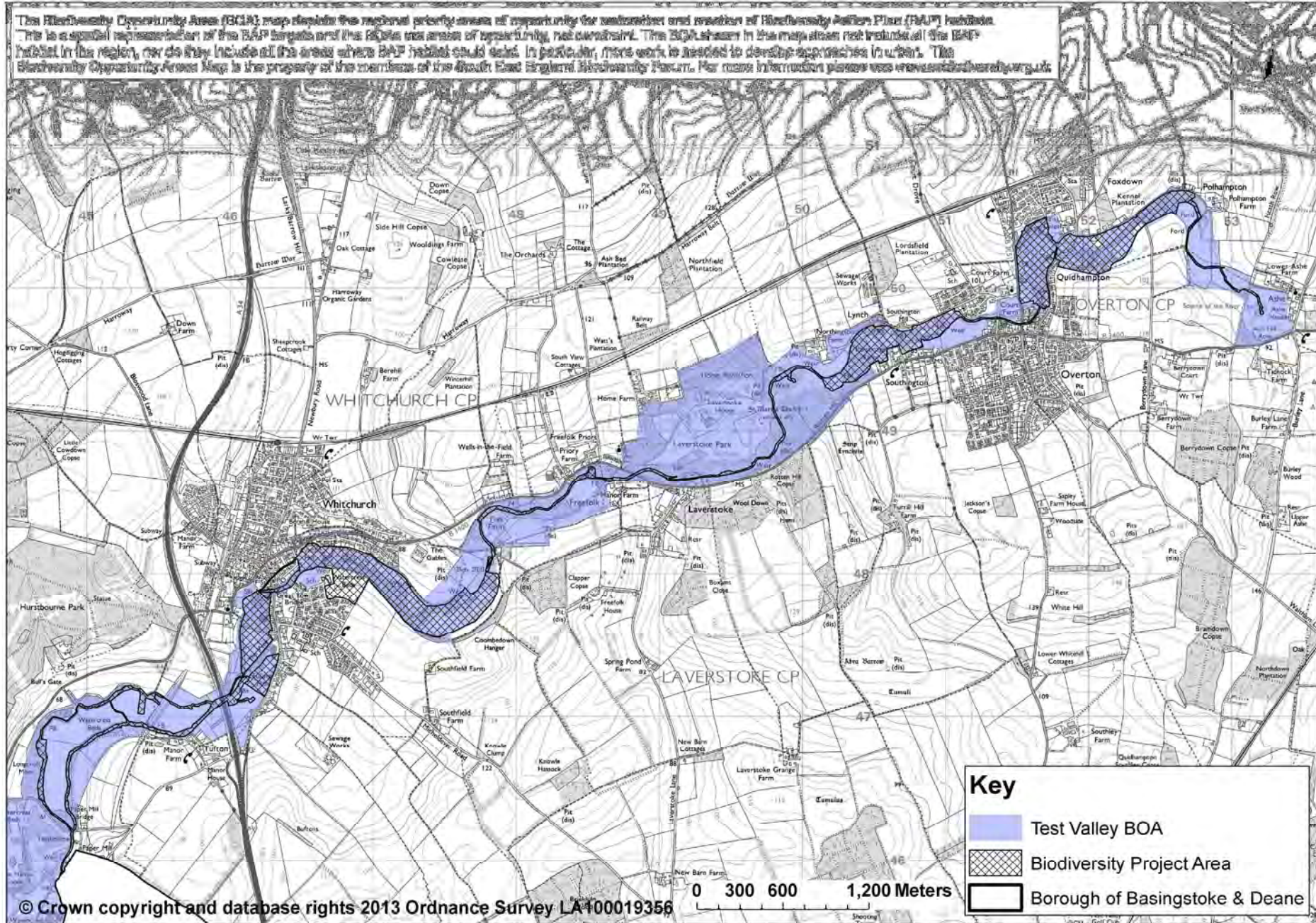
- Three Downs Link
- Sustrans National Cycle Route 23
- Long Distance Rights of Way
- Footpath
- Bridleway
- Restricted Byway
- Byway Open to All Traffic
- Dedicated Access Land (CRoW Act)
- Access Land (CRoW Act)
- Borough of Basingstoke & Deane

Plan 26 – Biodiversity Priority Area (BPA) – River Loddon



Plan 27 – Biodiversity Priority Area (BPA) – River Test

The Biodiversity Opportunity Areas (BOA) map depicts the national priority areas of opportunity for selection and creation of Biodiversity Action Plans (BAP) habitats. It is a spatial representation of the BAP targets and the BOA is an area of opportunity, not constraint. The BOA shown in the map does not include all the BAP habitat in the region, nor does it include all the areas where BAP habitat could exist. In particular, more work is needed to develop approaches to water. The Biodiversity Opportunity Areas Map is the property of the members of the South East England Biodiversity Forum. For more information please visit www.biodiversity.gov.uk



www.basingstoke.gov.uk | 01256 844844

customer.service@basingstoke.gov.uk

  @BasingstokeGov

If you need this information in a different format,
for example large print, CD or braille, please
contact the council.

©Basingstoke and Deane Borough Council November 2018

