



Basingstoke  
and Deane

# Green Infrastructure Strategy for Basingstoke and Deane (2018 to 2029)

## Appendix F - Baseline and Analysis Mapping (Part III)



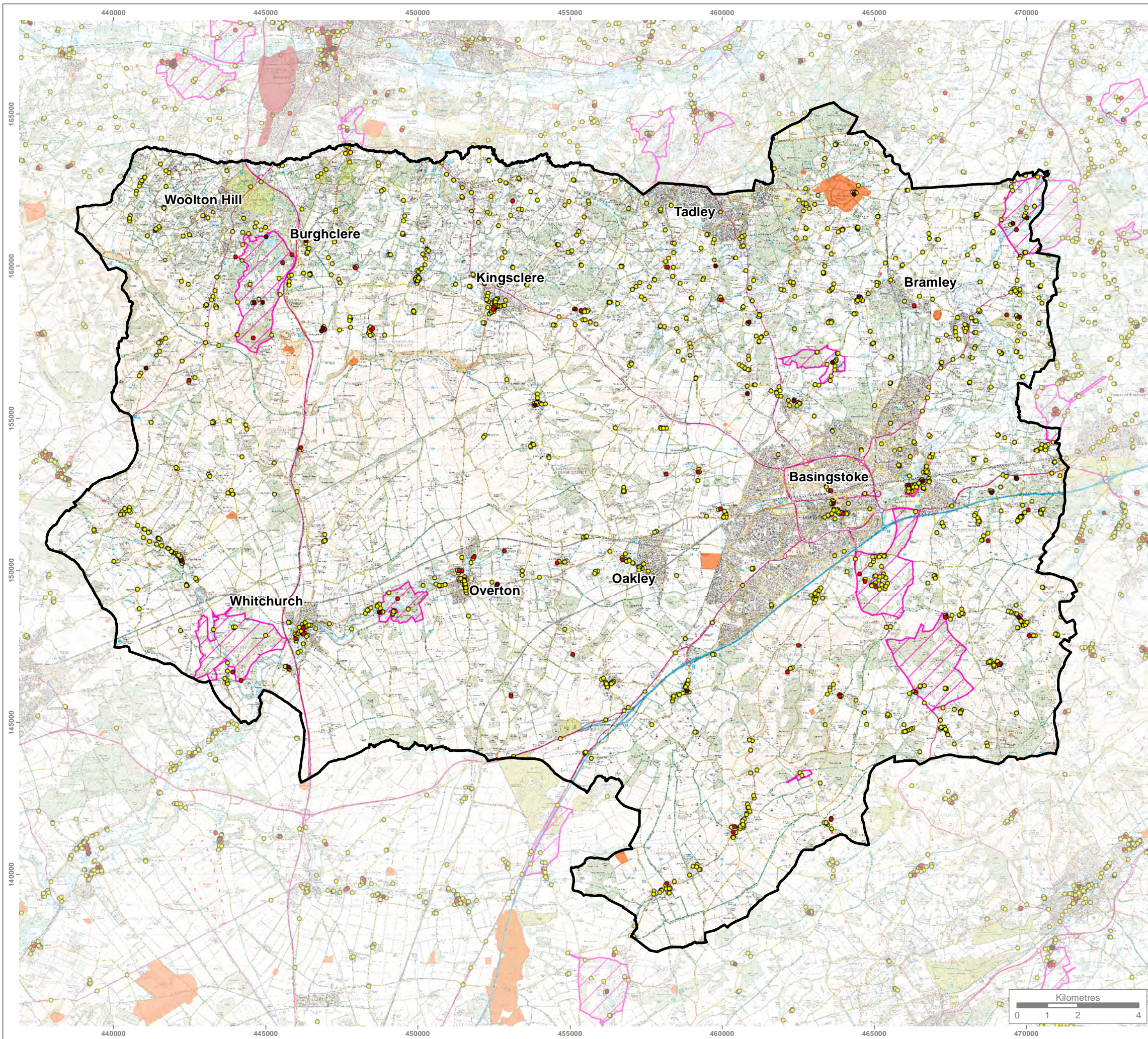


## Appendix F (Part III)

### Green Infrastructure Strategy – Review and Update (2018)

Theme	Figure Number	Title
Landscape, heritage & sense of place	Figure 5.7	Heritage designations
Biodiversity	Figure 5.8	Sites of importance for nature conservation (SINCs)
	Figure 5.9	Priority habitats (Hampshire Biodiversity Information Centre (HBIC))
	Figure 5.10	Broad habitats (HBIC)
	Figure 5.11	Agri-environment schemes (Natural England)
	Figure 5.11a	Biodiversity Opportunity Areas
Water resources		n/a
Tree & woodland resource	Figure 5.12	Undermanaged woodland
	Figure 5.13	Woodland for access and recreation
Economy		n/a
Access & recreation	Figure 5.14	PRoW network
Health & wellbeing	Figure 5.15	Health deprivation and green space (Borough)
Local Awareness & involvement	Figure 5.16	Ward boundaries – Basingstoke
	Figure 5.17	Ward boundaries – Borough
	Figure 5.18	Multiple deprivation – Basingstoke
	Figure 5.19	Multiple deprivation – Borough





**KEY**

Basingstoke and Deane Borough Boundary

**Heritage Designations**

Registered Battlefield

Grade I Listed Building

Grade II\* Listed Building

Grade II Listed Building

Registered Park and Garden

Scheduled Monument



Reproduced by permission of Ordnance Survey on behalf of Her Majesty's Stationery Office.

Contains OS data © Crown Copyright and database right 2017. All rights reserved. Base mapping provided by client



Rev	Description	Drawn	Approved	Date



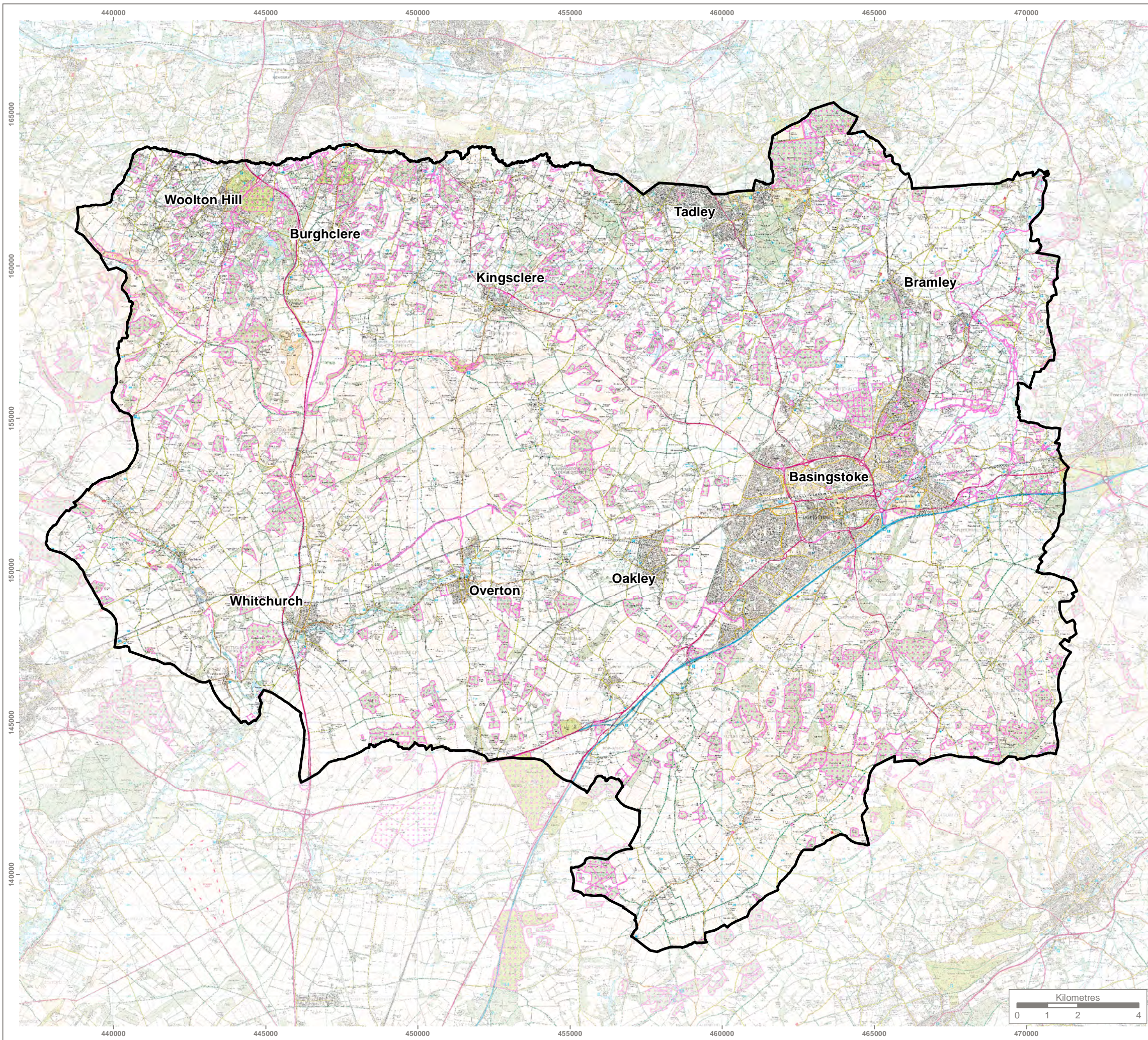
Genesis Centre, Birchwood Science Park, Warrington WA3 7BH  
Tel 01925 844004 e-mail tep@tep.uk.com www.tep.uk.com

Project  
**Basingstoke and Deane Green Infrastructure Strategy**



Title  
**Figure 5.7 - Heritage Designations**

Drawing Number  
**G6297.001**

Drawn	Checked	Approved	Scale	Date
RE	JS	TJ	1:125,000 @ A3	25/07/2018



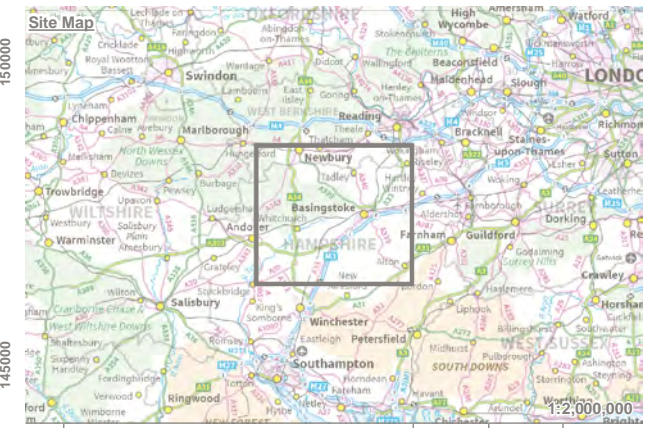
**KEY**

-  Basingstoke and Deane Borough Boundary
-  Sites of Importance for Nature Conservation (SINCs)

**Note:**  
 This map contains data from the following sources:  
 - OS OpenData  
 - Basingstoke and Deane Borough Council  
 - Hampshire Biodiversity Information Centre



Reproduced by permission of Ordnance Survey on behalf of Her Majesty's Stationery Office.  
 Contains OS data © Crown Copyright and database right 2017. All rights reserved.  
 Base mapping provided by client



Rev	Description	Drawn	Approved	Date

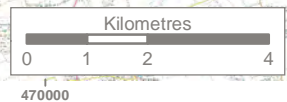
**TEP** | **THE ENVIRONMENT PARTNERSHIP**  
 Genesis Centre, Birchwood Science Park, Warrington WA3 7BH  
 Tel 01925 844004 e-mail tep@tep.uk.com www.tep.uk.com

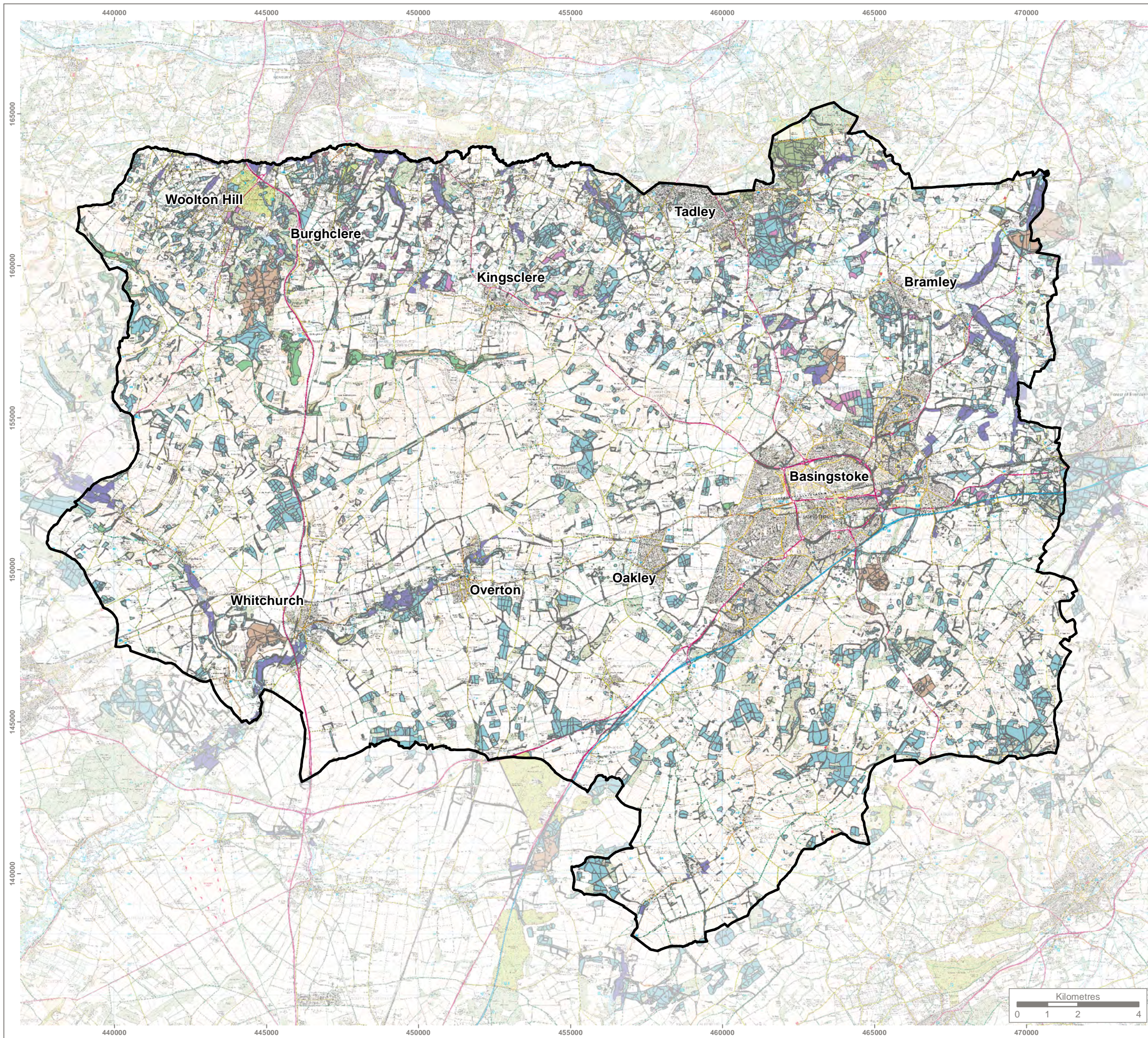
Project  
**Basingstoke and Deane Green Infrastructure Strategy**

Title  
**Figure 5.8 - Sites of Importance for Nature Conservation**

Drawing Number  
**G6297.036**

Drawn	Checked	Approved	Scale	Date
RE	JS	TJ	1:125,000 @ A3	25/07/2018





**KEY**

- Basingstoke and Deane Borough Boundary
- Coastal and Floodplain Grazing Marsh
- Eutrophic Standing Waters
- Lowland Beech and Yew Woodland
- Lowland Calcareous Grassland
- Lowland Dry Acid Grassland
- Lowland Fens
- Lowland Heathland
- Lowland Meadows
- Lowland Mixed Deciduous Woodland
- Purple Moor Grass and Rush Pastures
- Reedbeds
- Wet Woodland
- Wood-Pasture and Parkland

**Note:**

This map contains data from the following sources:  
 - OS OpenData  
 - Basingstoke and Deane Borough Council  
 - Hampshire Biodiversity Information Centre



Reproduced by permission of Ordnance Survey on behalf of Her Majesty's Stationery Office.

Contains OS data © Crown Copyright and database right 2017. All rights reserved. Base mapping provided by client



Rev	Description	Drawn	Approved	Date



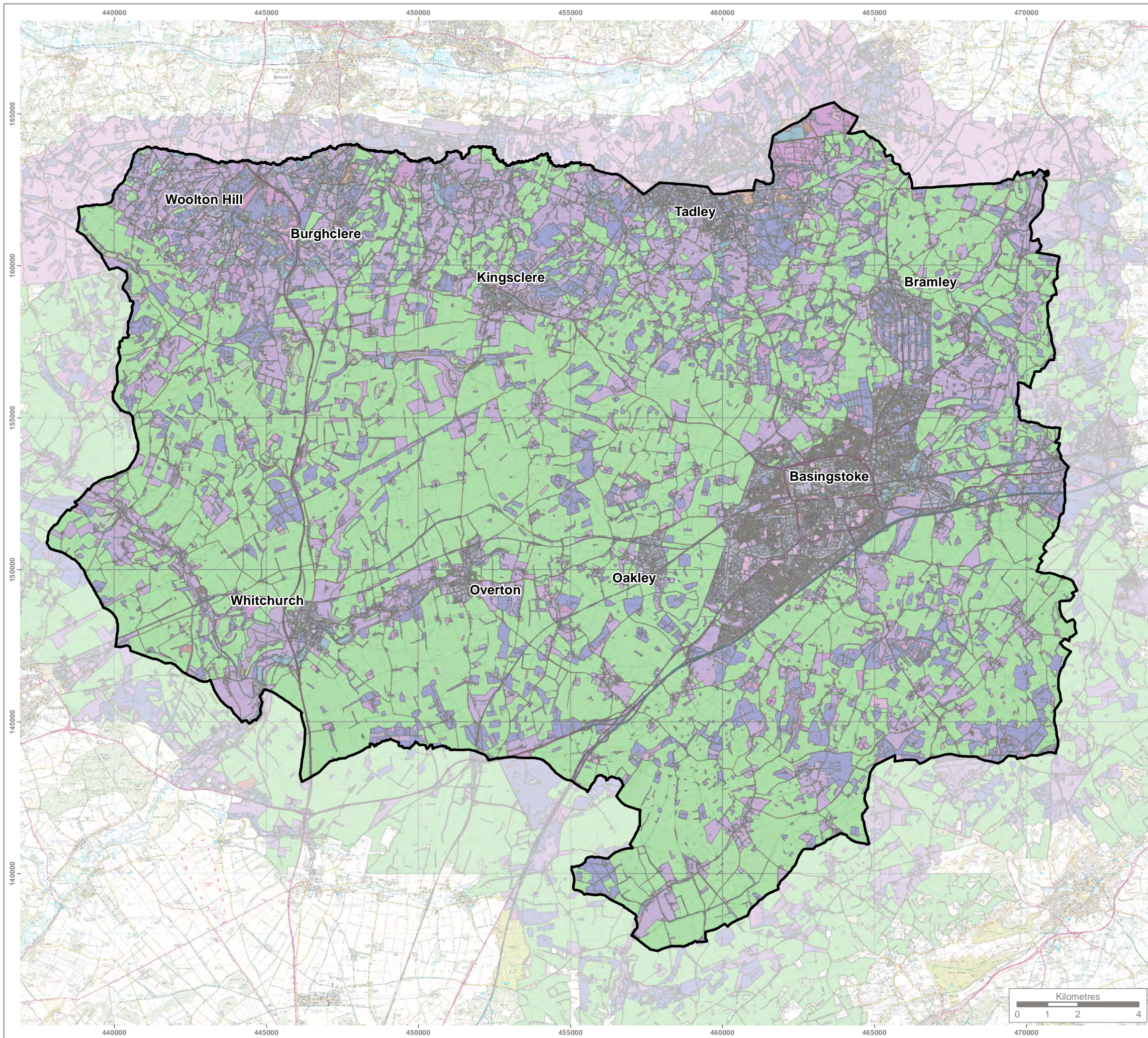
Genesis Centre, Birchwood Science Park, Warrington WA3 7BH  
 Tel 01925 844004 e-mail tep@tep.uk.com www.tep.uk.com

Project  
**Basingstoke and Deane Green Infrastructure Strategy**

Title  
**Figure 5.9 - Priority Habitats (Hampshire Biodiversity Information Centre (HBIC))**

Drawing Number  
**G6297.037**

Drawn	Checked	Approved	Scale	Date
RE	TJ	TJ	1:125,000 @ A3	25/07/2018



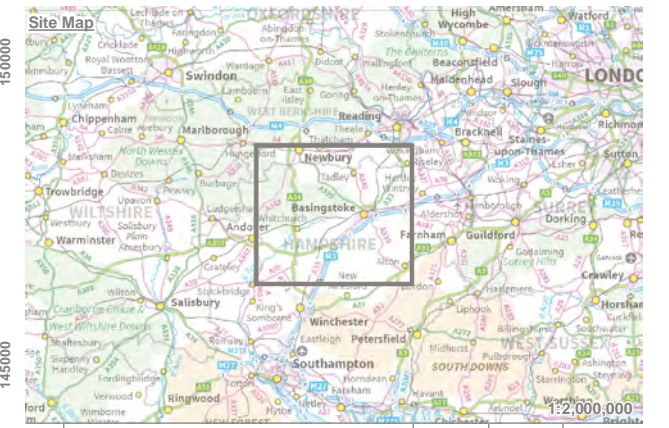
**KEY**

- Basingstoke and Deane Borough Boundary
- Acid grassland
- Arable and horticulture
- Boundary and linear features
- Bracken
- Broadleaved, mixed, and yew woodland
- Built-up areas and gardens
- Calcareous grassland
- Coniferous woodland
- Dwarf shrub heath
- Fen, marsh and swamp
- Improved grassland
- Inland rock
- Littoral Sediment
- Neutral grassland
- Rivers and streams
- Standing open water and canals
- Unidentified habitat
- Unidentified water

**Note:**  
 This map contains data from the following sources:  
 - OS OpenData  
 - Basingstoke and Deane Borough Council  
 - Hampshire Biodiversity Information Centre



Reproduced by permission of Ordnance Survey on behalf of Her Majesty's Stationery Office.  
 Contains OS data © Crown Copyright and database right 2017. All rights reserved.  
 Base mapping provided by client



Rev	Description	Drawn	Approved	Date

**THE ENVIRONMENT PARTNERSHIP**

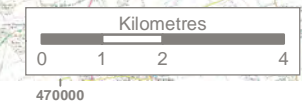
Genesis Centre, Birchwood Science Park, Warrington WA3 7BH  
 Tel 01925 844004 e-mail tep@tep.uk.com www.tep.uk.com

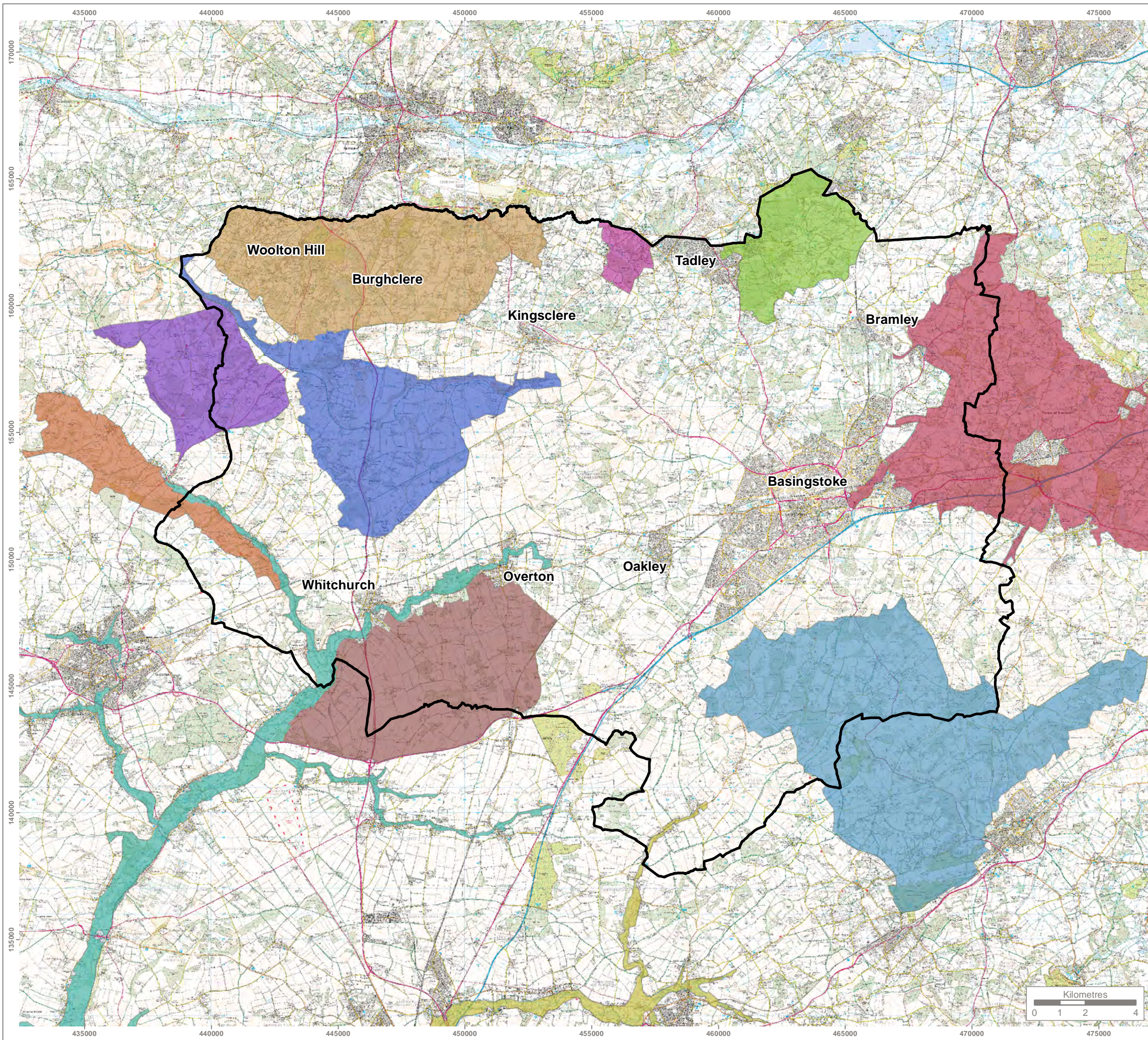
Project  
**Basingstoke and Deane Green Infrastructure Strategy**

Title  
**Figure 5.10 - Broad Habitats (Hampshire Biodiversity Information Centre (HBIC))**

Drawing Number  
**G6297.038**

Drawn	Checked	Approved	Scale	Date
RE	TJ	TJ	1:125,000 @ A3	25/07/2018





**KEY**

- Basingstoke and Dean Borough Boundary
- Biodiversity Opportunity Areas**
- Ashford Hill
- East Woodhay to Headley
- Facombe
- Herriard Wooded Downland Plateau
- Itchen Valley
- Loddon Catchment
- Longparish Important Arable Plants
- Northern Escarpment: West Woodhay to Watership Down
- Silchester to Tadley
- Test Valley
- Vernham's Dean to Hurstbourne Tarant



Reproduced by permission of Ordnance Survey on behalf of Her Majesty's Stationery Office.  
 Contains OS data © Crown Copyright and database right 2017. All rights reserved.  
 Base mapping provided by client



Rev	Description	Drawn	Approved	Date

**TEP** | **THE ENVIRONMENT PARTNERSHIP**

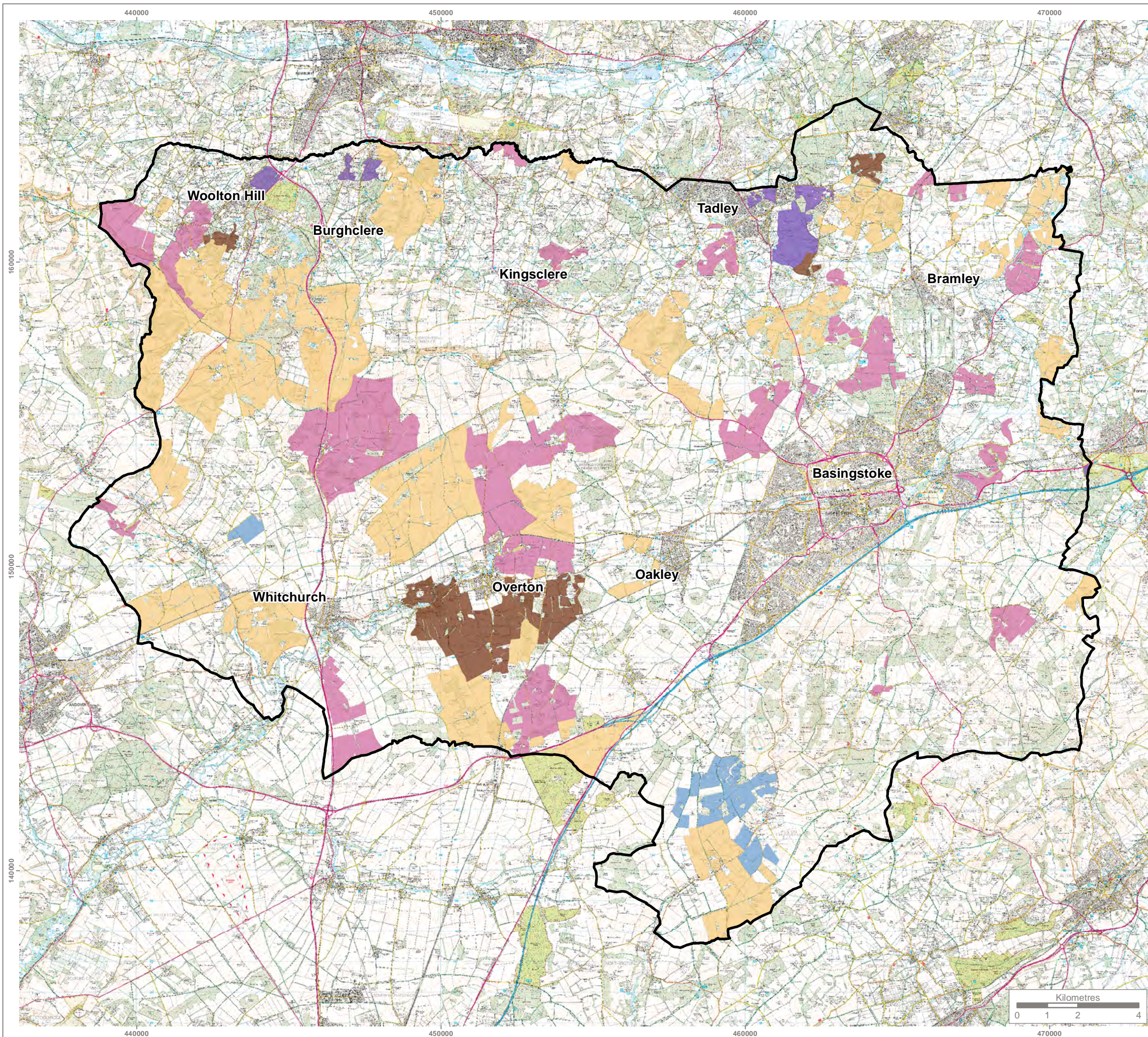
Genesis Centre, Birchwood Science Park, Warrington WA3 7BH  
 Tel 01925 844004 e-mail tep@tep.uk.com www.tep.uk.com

Project  
**Basingstoke GI Strategy**

Title  
**Figure 5.11a: Biodiversity Opportunity Areas**

Drawing Number  
**G6297.009**

Drawn	Checked	Approved	Scale	Date
RE	JS	TJ	1:150,000 @ A3	26/07/2018



**KEY**

Basingstoke and Deane Borough Boundary

**Countryside Stewardship Scheme Agreements**

NELMS Middle Tier

**Environmental Stewardship Scheme Agreements**

- Entry Level Stewardship
- Entry Level plus Higher Level Stewardship
- Higher Level Stewardship
- Organic Entry Level Stewardship
- Organic Entry Level plus Higher Level Stewardship

**Note:**

Within Basingstoke borough boundary:  
 Number of agreements: 60  
 Total area (ha): 14,470ha

This map contains data from the following sources:  
 - OS Opendata  
 - Basingstoke and Deane Borough Council



Reproduced by permission of Ordnance Survey on behalf of Her Majesty's Stationery Office.  
 Contains OS data © Crown Copyright and database right 2017. All rights reserved.  
 Base mapping provided by client



Rev	Description	Drawn	Approved	Date

**TEP** | **THE ENVIRONMENT PARTNERSHIP**

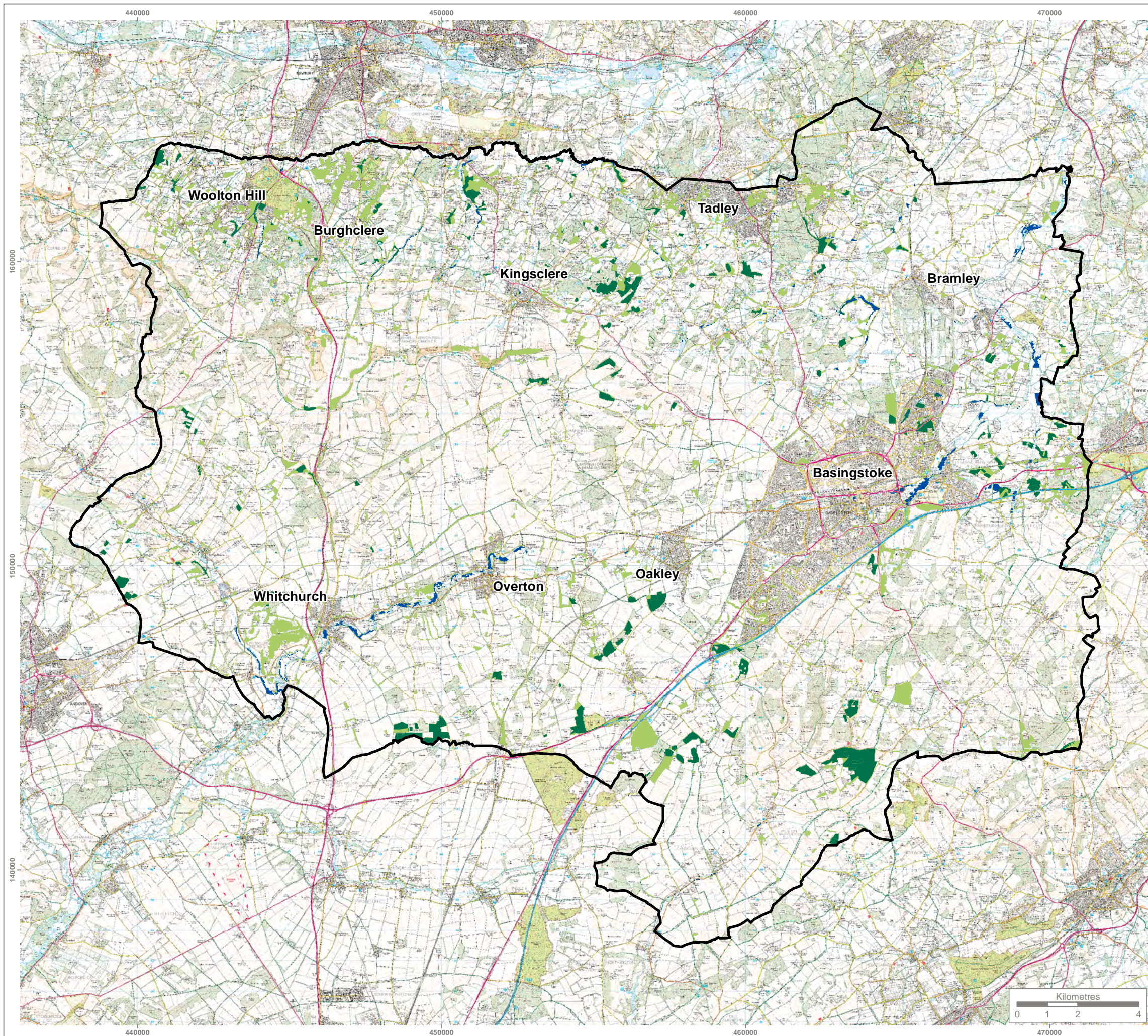
Genesis Centre, Birchwood Science Park, Warrington WA3 7BH  
 Tel 01925 844004 e-mail tep@tep.uk.com www.tep.uk.com

Project  
**Basingstoke and Deane Green Infrastructure Strategy**

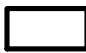



Title  
**Figure 5.11 - Agri-environment Schemes (Natural England)**

Drawing Number  
**G6297.018**

Drawn	Checked	Approved	Scale	Date
RE	TJ	TJ	1:125,000 @ A3	25/07/2018



**KEY**

-  Basingstoke and Deane Borough Boundary
-  Undermanaged Woodland (i)
-  Undermanaged Ancient Woodland (i)
-  Undermanaged Floodplain Woodland (i)

**Note:**

Undermanaged woodland as percentage of Basingstoke and Deane Borough:

- Undermanaged woodland - 5.7%
- Undermanaged ancient woodland - 1.4%
- Undermanaged floodplain woodland - 0.3%

This map contains data from the following sources:

- OS OpenData
- Basingstoke and Deane Borough Council
- Forestry Commission - Contains public sector information licensed under the Open Government Licence v3.0

(i) Dataset from Forestry Commission 'Managed Woodland Headline Performance Indicator', ie: Assumed Undermanaged woodland by proxy.



Reproduced by permission of Ordnance Survey on behalf of Her Majesty's Stationery Office.

Contains OS data © Crown Copyright and database right 2017. All rights reserved. Base mapping provided by client



Rev	Description	Drawn	Approved	Date



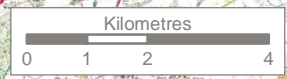
Genesis Centre, Birchwood Science Park, Warrington WA3 7BH  
 Tel 01925 844004 e-mail tep@tep.uk.com www.tep.uk.com

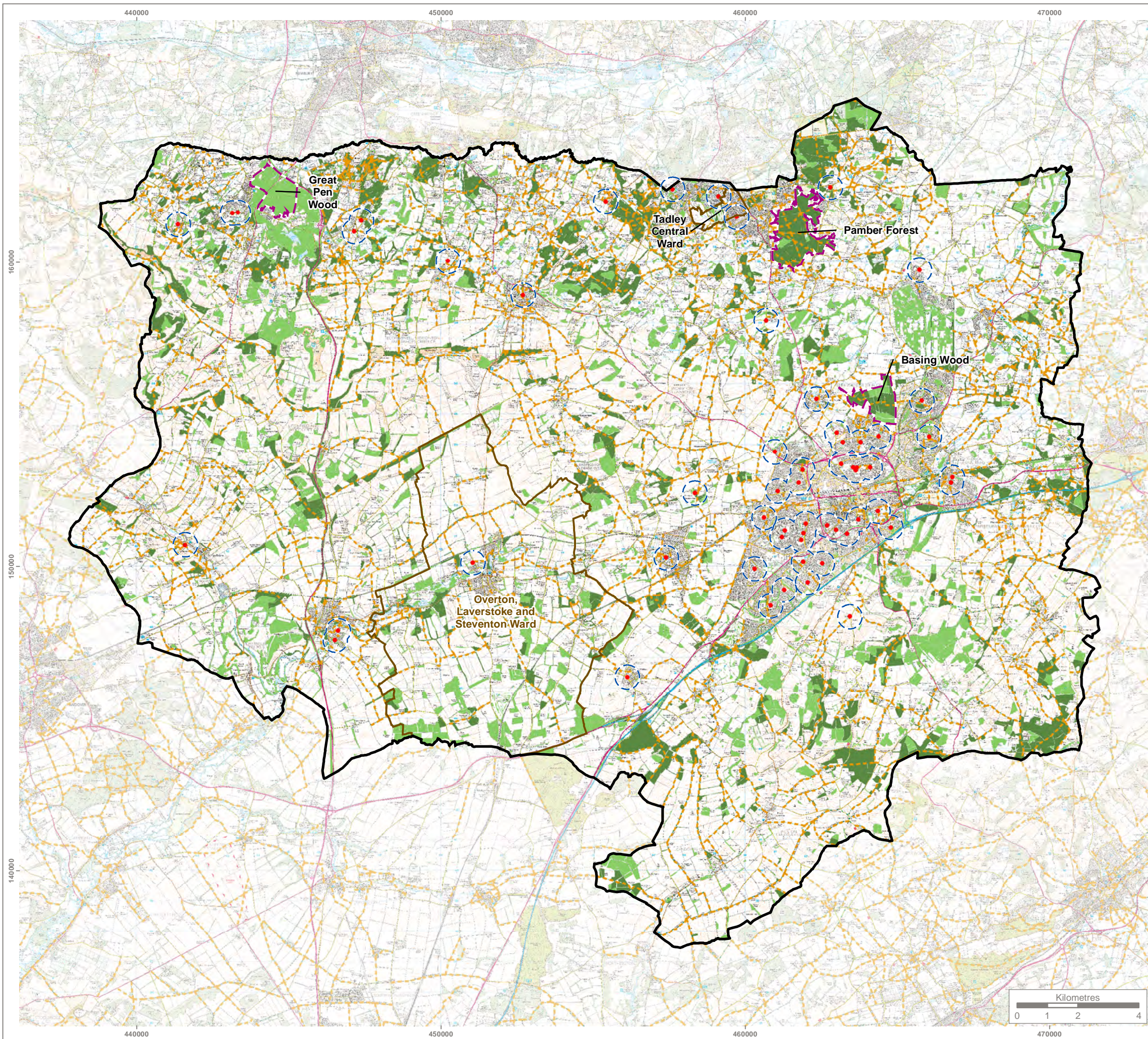
Project  
**Basingstoke and Deane Green Infrastructure Strategy**

Title  
**Figure 5.12 - Undermanaged Woodland**

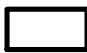






Drawing Number  
**G6297.020**

Drawn	Checked	Approved	Scale	Date
RE	TJ	FBH	1:125,000 @ A3	25/07/2018





**KEY**

-  Basingstoke and Deane Borough Boundary
-  Areas of Deficiency in Multifunctional Green Space (Overton, Laverstoke, Steventon, Tadley Central wards)
-  School
-  400m Offset from School
-  Public Rights of Way (PRoW)
-  Woodland Served by PRoW (i)
-  Woodland

**Note:**

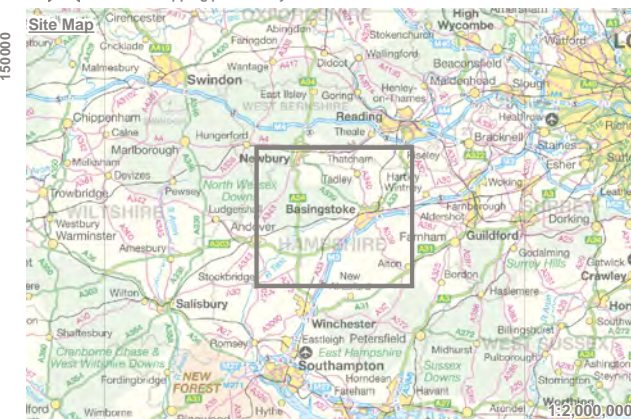
This map contains data from the following sources:  
 - OS OpenData  
 - Basingstoke and Deane Borough Council

(i) PRoW within 20m of woodland



Reproduced by permission of Ordnance Survey on behalf of Her Majesty's Stationery Office.

Contains OS data © Crown Copyright and database right 2017. All rights reserved. Base mapping provided by client



Rev	Description	Drawn	Approved	Date



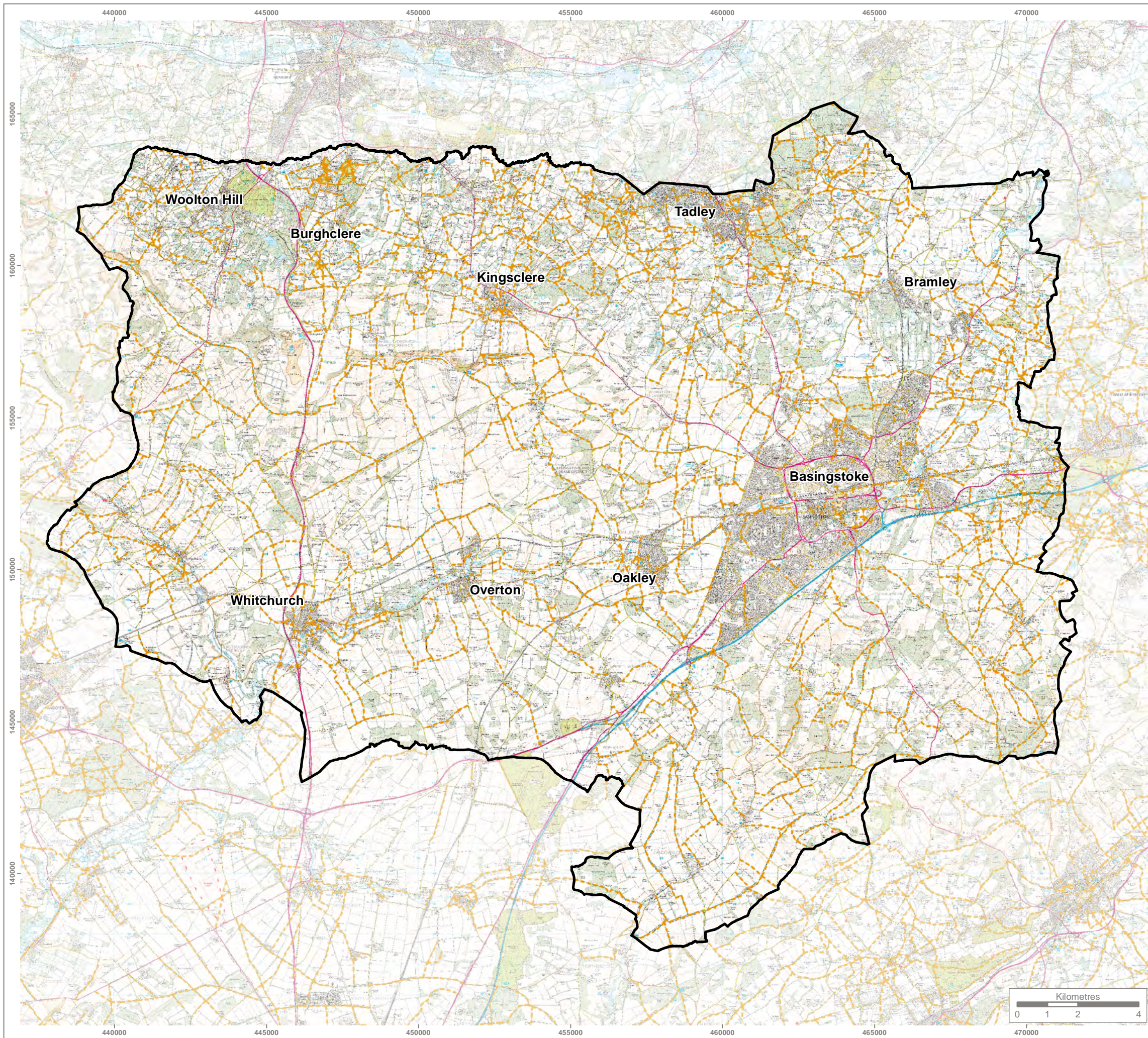
Genesis Centre, Birchwood Science Park, Warrington WA3 7BH  
 Tel 01925 844004 e-mail tep@tep.uk.com www.tep.uk.com

Project  
**Basingstoke and Deane Green Infrastructure Strategy**



Title  
**Figure 5.13 - Woodlands for Access and Recreation**

Drawing Number  
**G6297.022**

Drawn	Checked	Approved	Scale	Date
RE	TJ	FBH	1:125,000 @ A3	10/10/2017



**KEY**

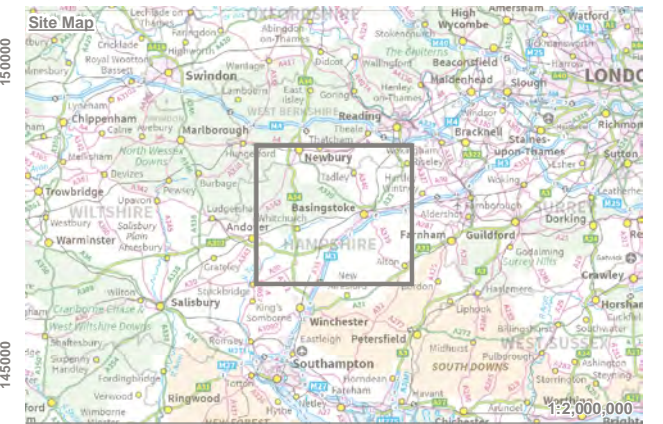
-  Basingstoke and Deane Borough Boundary
-  Hampshire Public Rights of Way (PRoW)

**Note:**

- This map contains data from the following sources:
- OS OpenData
  - Basingstoke and Deane Borough Council



Reproduced by permission of Ordnance Survey on behalf of Her Majesty's Stationary Office.  
 Contains OS data © Crown Copyright and database right 2017. All rights reserved.  
 Base mapping provided by client



Rev	Description	Drawn	Approved	Date



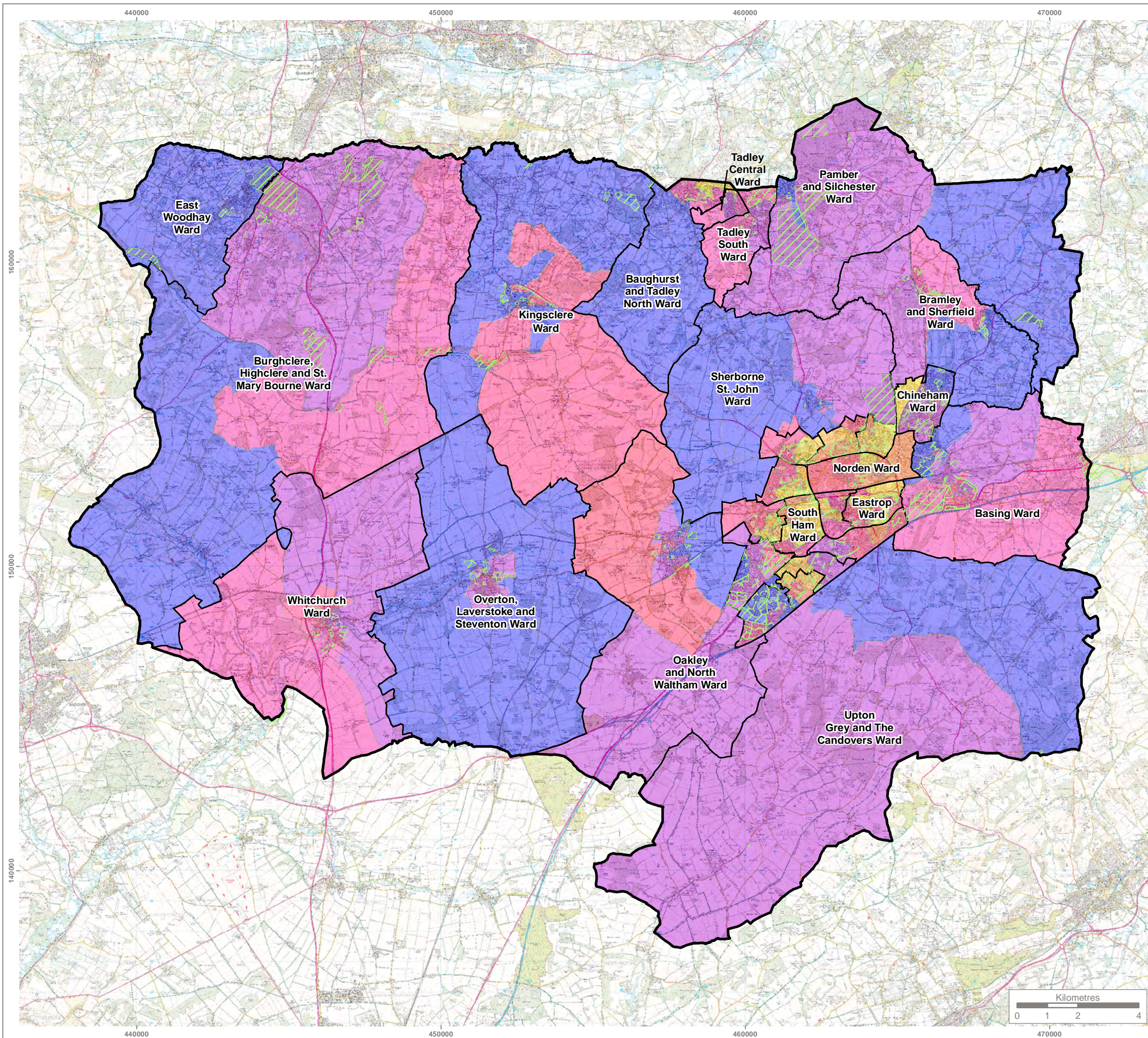
Genesis Centre, Birchwood Science Park, Warrington WA3 7BH  
 Tel 01925 844004 e-mail tep@tep.uk.com www.tep.uk.com

Project  
**Basingstoke and Deane Green Infrastructure Strategy**



Title  
**Figure 5.14 - Public Rights of Way Network**

Drawing Number  
**G6297.002**

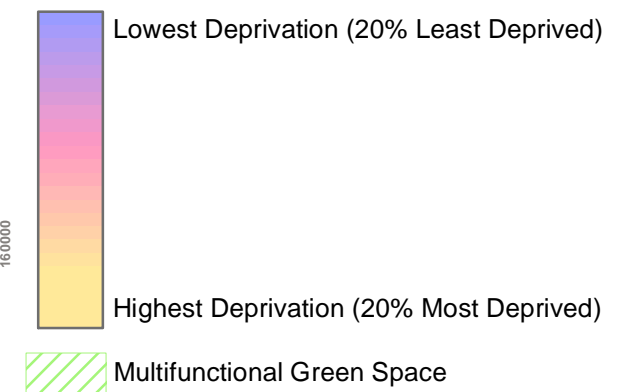
Drawn	Checked	Approved	Scale	Date
RE	JS	TJ	1:125,000 @ A3	25/07/2018



**KEY**

-  Basingstoke and Deane Borough Boundary
-  Basingstoke and Deane Ward Boundary

**Basingstoke IMD (Index of Multiple Deprivation) 2015 Health Data**



**Note:**

This map contains data from the following sources:  
 - OS OpenData  
 - Basingstoke and Deane Borough Council  
 - Department for Communities and Local Government (DCLG)

The data shown on this plan is shown as a percentage of LSOA's (Lower Layer Super Output Areas) in England that are more deprived than the area in question.

Reproduced by permission of Ordnance Survey on behalf of Her Majesty's Stationery Office.  
 Contains OS data © Crown Copyright and database right 2017. All rights reserved.  
 Base mapping provided by client



Rev	Description	Drawn	Approved	Date

**TEP** | **THE ENVIRONMENT PARTNERSHIP**

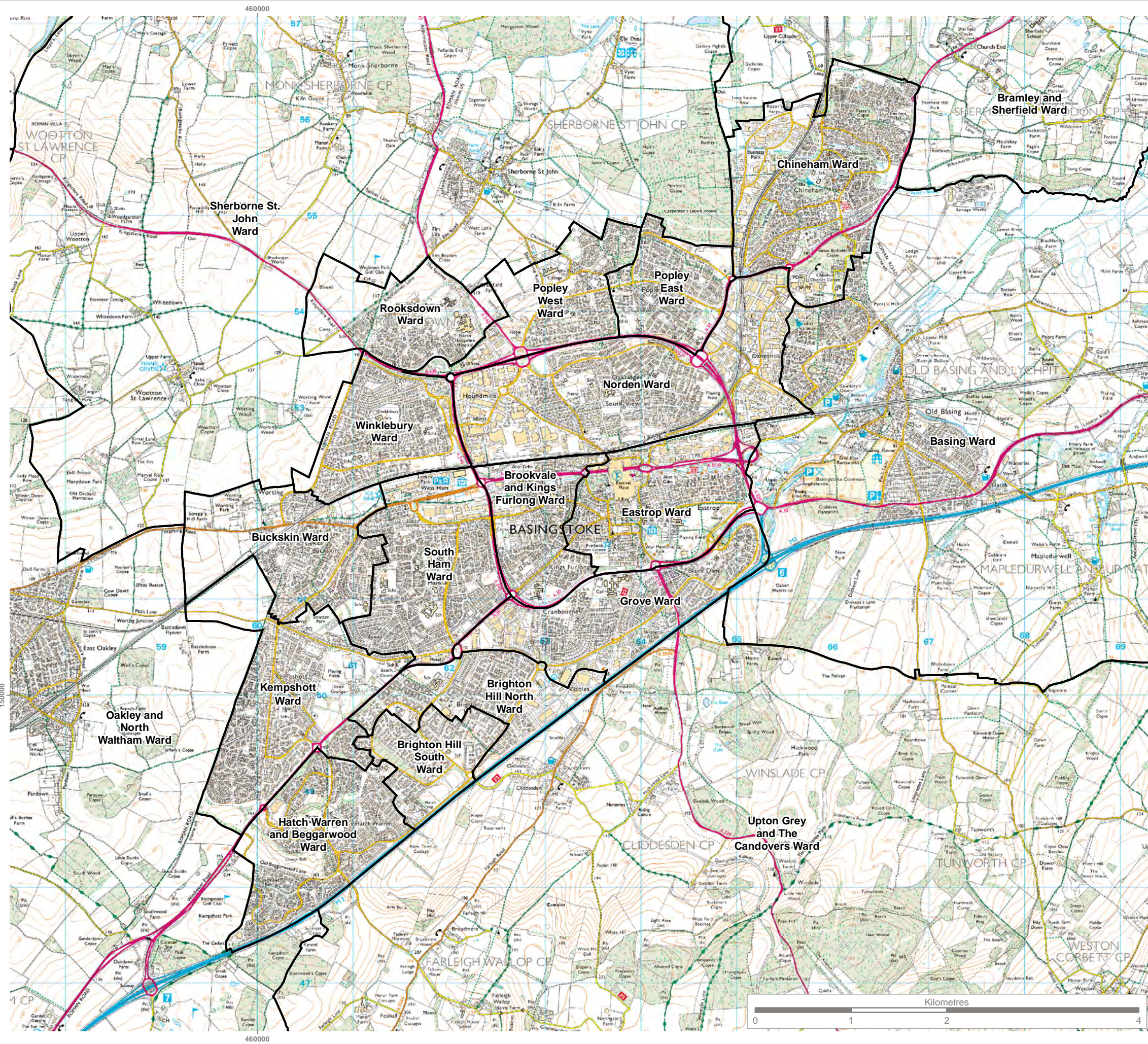
Genesis Centre, Birchwood Science Park, Warrington WA3 7BH  
 Tel 01925 844004 e-mail tep@tep.uk.com www.tep.uk.com

Project  
**Basingstoke and Deane Green Infrastructure Strategy**

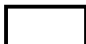
Title  
**Figure 5.15 - Health Deprivation and Green Space (Borough)**

Drawing Number  
**G6297.012**

Drawn	Checked	Approved	Scale	Date
RE	TJ	FBH	1:125,000 @ A3	10/10/2017



**KEY**

 Basingstoke and Deane Ward Boundary



Reproduced by permission of Ordnance Survey on behalf of Her Majesty's Stationery Office.  
 Contains OS data © Crown Copyright and database right 2017. All rights reserved.  
 Base mapping provided by client



Rev	Description	Drawn	Approved	Date



**THE ENVIRONMENT PARTNERSHIP**

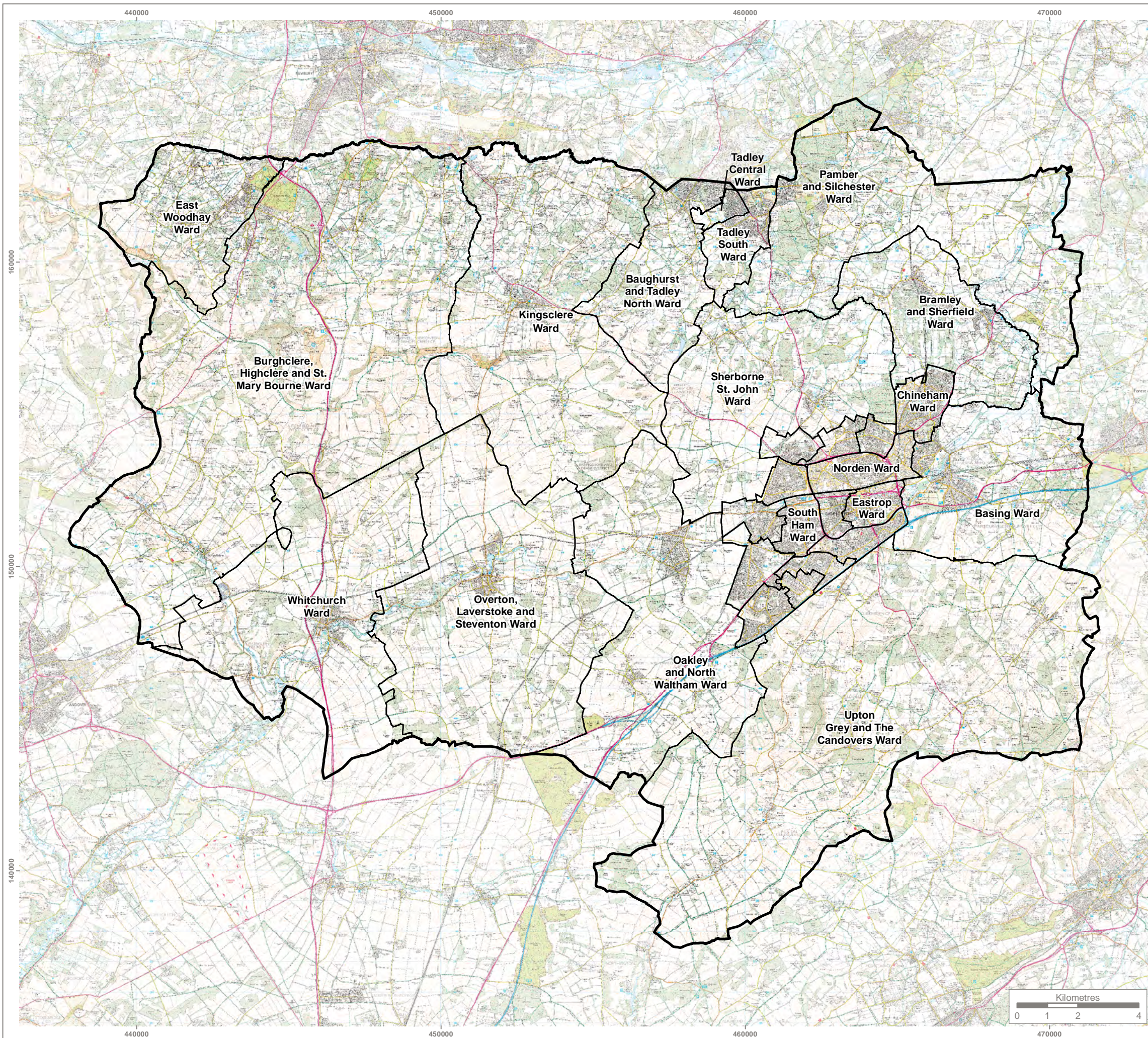
Genesis Centre, Birchwood Science Park, Warrington WA3 7BH  
 Tel 01925 844004 e-mail tep@tep.uk.com www.tep.uk.com

Project  
**Basingstoke and Deane Green Infrastructure Strategy**



Title  
**Figure 5.16 - Ward Boundaries - Basingstoke**

Drawing Number  
**G6297.039**

Drawn	Checked	Approved	Scale	Date
RE	TJ	TJ	1:40,000 @ A3	10/10/2017



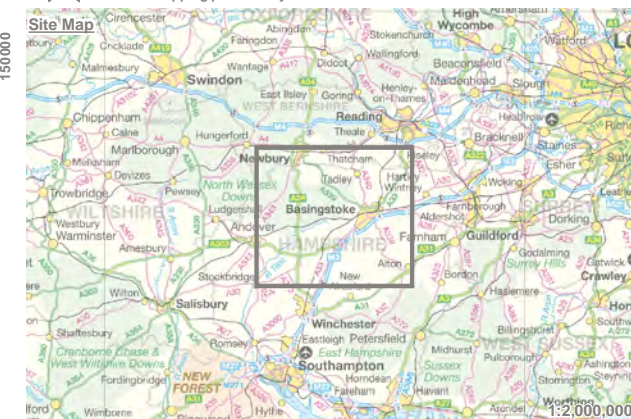
**KEY**

-  Basingstoke and Deane Borough Boundary
-  Basingstoke and Deane Ward Boundary



Reproduced by permission of Ordnance Survey on behalf of Her Majesty's Stationery Office.

Contains OS data © Crown Copyright and database right 2017. All rights reserved. Base mapping provided by client



Rev	Description	Drawn	Approved	Date



Genesis Centre, Birchwood Science Park, Warrington WA3 7BH  
Tel 01925 844004 e-mail tep@tep.uk.com www.tep.uk.com

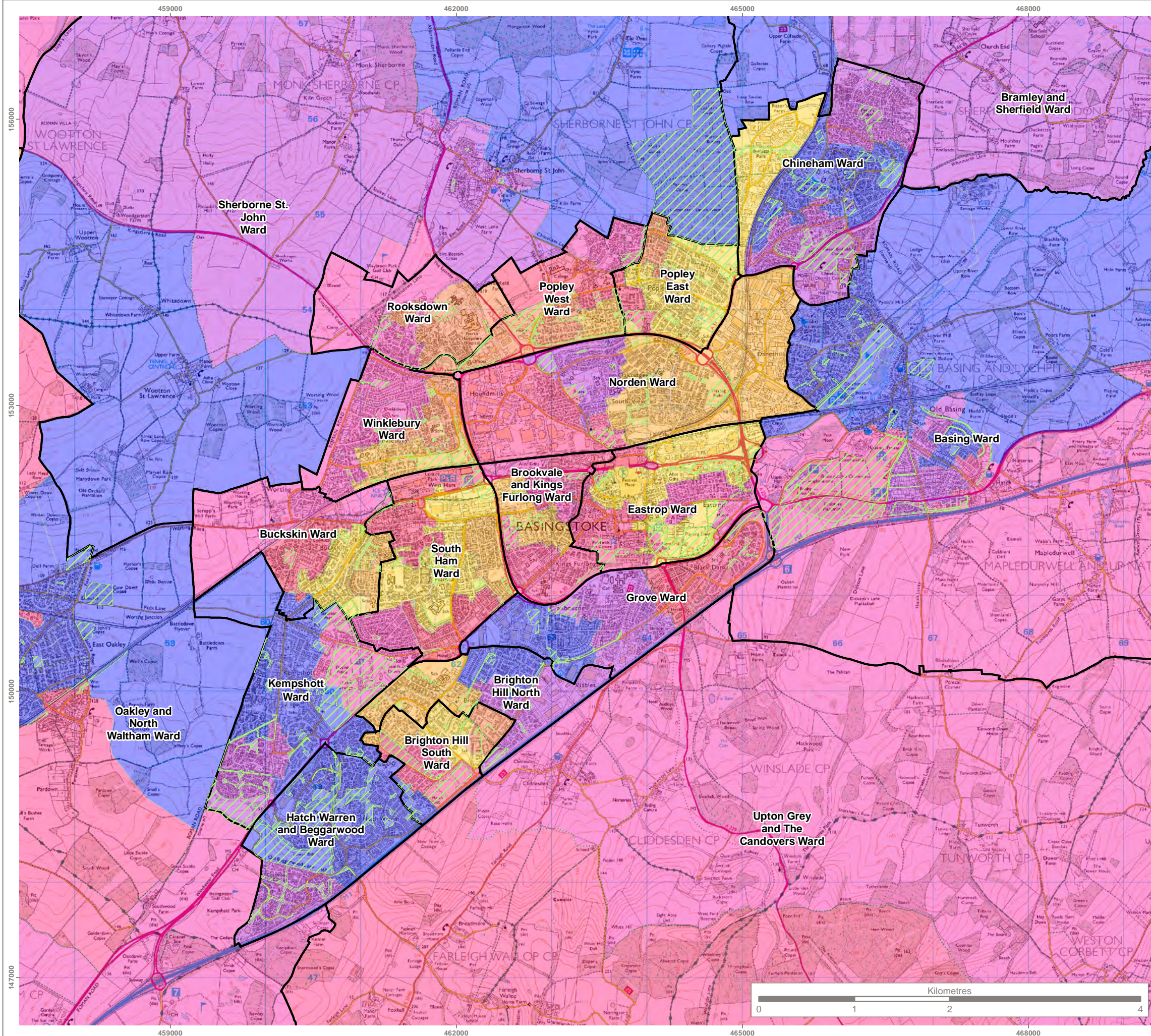
Project  
**Basingstoke and Deane Green Infrastructure Strategy**

Title  
**Figure 5.17 - Ward Boundaries - Borough**



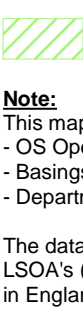

Drawing Number  
**G6297.040**

Drawn	Checked	Approved	Scale	Date
RE	TJ	TJ	1:125,000 @ A3	10/10/2017





**KEY**

-  Basingstoke and Deane Ward Boundary
- Basingstoke IMD (Index of Multiple Deprivation) 2015 Data**
-  Lowest Deprivation (20% Least Deprived)
-  Highest Deprivation (20% Most Deprived)
-  Multifunctional Green Space

**Note:**

This map contains data from the following sources:  
 - OS OpenData  
 - Basingstoke and Deane Borough Council  
 - Department for Communities and Local Government (DCLG)

The data shown on this plan is shown as a percentage of LSOA's (Lower Layer Super Output Areas) in England that are more deprived than the area in question.



Reproduced by permission of Ordnance Survey on behalf of Her Majesty's Stationery Office.  
 Contains OS data © Crown Copyright and database right 2017. All rights reserved.  
 Base mapping provided by client



Rev	Description	Drawn	Approved	Date

**TEP** | **THE ENVIRONMENT PARTNERSHIP**

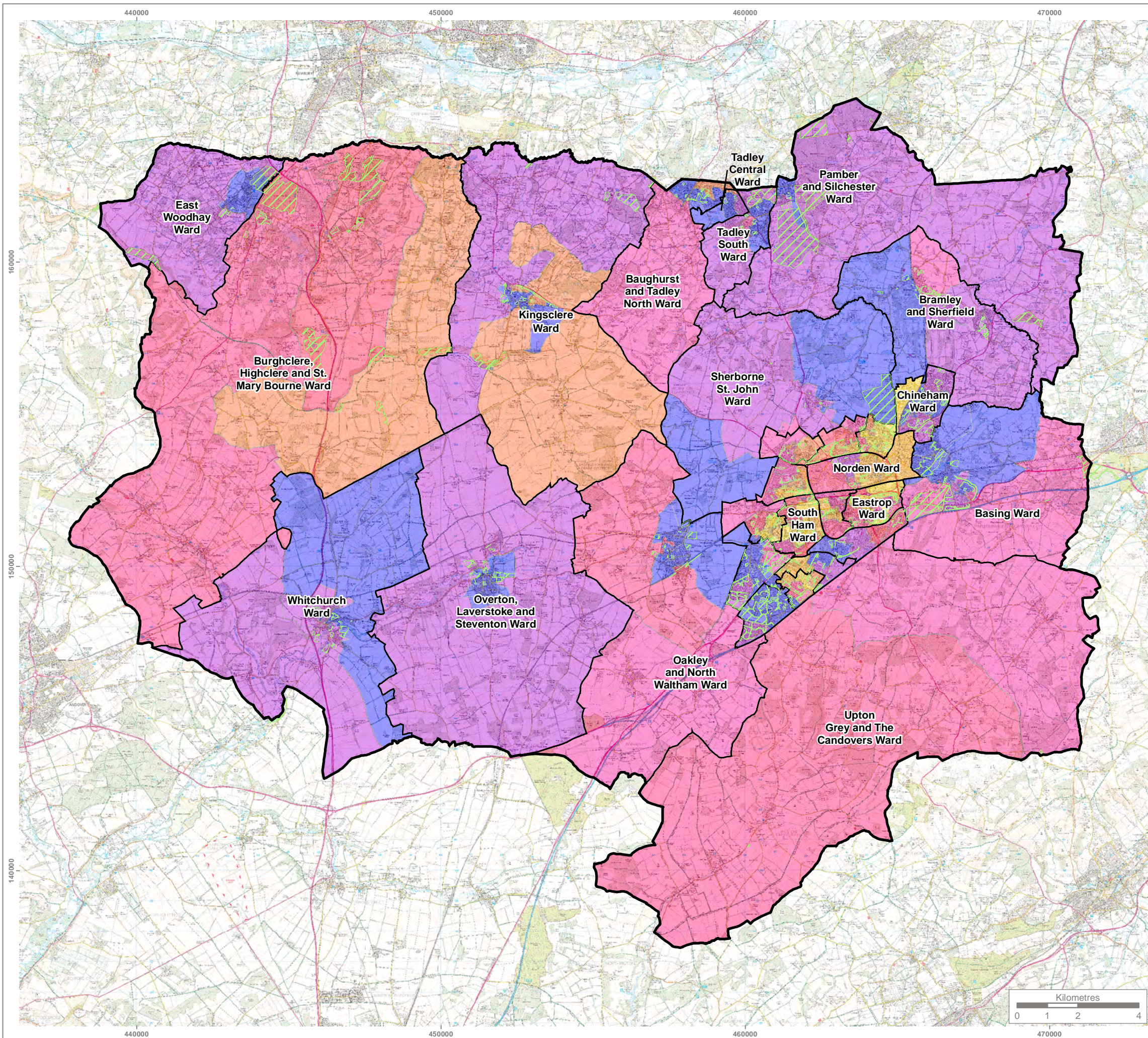
Genesis Centre, Birchwood Science Park, Warrington WA3 7BH  
 Tel 01925 844004 e-mail tep@tep.uk.com www.tep.uk.com

Project  
**Basingstoke and Deane Green Infrastructure Strategy**

Title  
**Figure 5.18 - Multiple Deprivation - Basingstoke**

Drawing Number  
**G6297.025**

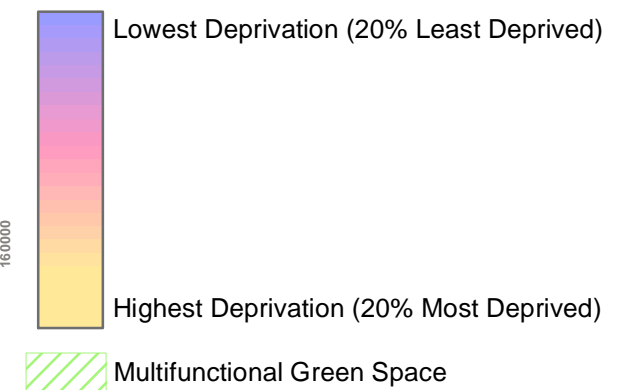
Drawn	Checked	Approved	Scale	Date
RE	TJ	TJ	1:40,000 @ A3	10/10/2017



**KEY**

- Basingstoke and Deane Borough Boundary
- Basingstoke and Deane Ward Bounday

**Basingstoke IMD (Index of Multiple Deprivation) 2015 Data**



**Note:**

This map contains data from the following sources:  
 - OS OpenData  
 - Basingstoke and Deane Borough Council  
 - Department for Communities and Local Government (DCLG)

The data shown on this plan is shown as a percentage of LSOA's (Lower Layer Super Output Areas) in England that are more deprived than the area in question.

Reproduced by permission of Ordnance Survey on behalf of Her Majesty's Stationary Office.  
 Contains OS data © Crown Copyright and database right 2017. All rights reserved.  
 Base mapping provided by client



Rev	Description	Drawn	Approved	Date

**TEP** | **THE ENVIRONMENT PARTNERSHIP**

Genesis Centre, Birchwood Science Park, Warrington WA3 7BH  
 Tel 01925 844004 e-mail tep@tep.uk.com www.tep.uk.com

Project  
**Basingstoke and Deane Green Infrastructure Strategy**

Title  
**Figure 5.19 - Multiple Deprivation - Borough**

Drawing Number  
**G6297.026**

Drawn	Checked	Approved	Scale	Date
RE	TJ	TJ	1:125,000 @ A3	10/10/2017

[www.basingstoke.gov.uk](http://www.basingstoke.gov.uk) | 01256 844844

[customer.service@basingstoke.gov.uk](mailto:customer.service@basingstoke.gov.uk)

  @BasingstokeGov

If you need this information in a different format,  
for example large print, CD or braille, please  
contact the council.

©Basingstoke and Deane Borough Council November 2018

